



OPERA GALLERY

PARIS



**COLLECTION DE MAÎTRES,
UN SIÈCLE D'ART MODERNE**



EXPOSITION DU 6 AU 27 AVRIL 2012

Opera Gallery Paris
356 rue Saint-Honoré, 75001 Paris
T. +33 (0)1 42 96 39 00 • paris@operagallery.com

www.operagallery.com

RAOUL DUFY

(1877 - 1953)

LE CONCERT MEXICAIN, 1951

Signed and dedicated 'Raoul Dufy à son Excellence Ilhawiyy Hussein Pacha'
(lower centre)
Gouache and watercolour on paper
50,2 x 66 cm - 19.8 x 26 in.

PROVENANCE

Ilhawiyy Hussein Pacha (gift from the artist)
Anon. sale, Sotheby's, London, 30 March 1988, lot 396
Anon. (acquired at the above sale); sale, Sotheby's, New York, 4 May 2006, lot 433
Anon. (acquired at the above sale); sale, Christie's, London, 19 June 2007, lot 249
Acquired at the above sale by the present owner

CERTIFICATE

Fanny Guillon-Laffaille has confirmed the authenticity of this work



RAOUL DUFY

(1877 - 1953)

LES TURFISTES, CIRCA 1933

Signed 'Raoul Dufy' (lower right corner)
Watercolour on paper
47 x 64 cm - 18.5 x 25.2 in.

PROVENANCE

Dr. Nicolau, Paris
Sale: Palais Gallière, Paris, 3 Dec. 1969, No. 79, ill.
Private collection (acquired at the above sale)

LITERATURE

Guillon-Laffaille F., Raoul Dufy, Catalogue raisonné des aquarelles, gouaches et pastels,
Louis Carré & Cie., Paris, 1981, vol. I, No. 842

CERTIFICATE

Fanny Guillon-Laffaille has confirmed the authenticity of this work
This work is registered under the reference No. A10 -1812



RAOUL DUFY
(1877 - 1953)

MAISONS À FALAISE, 1905

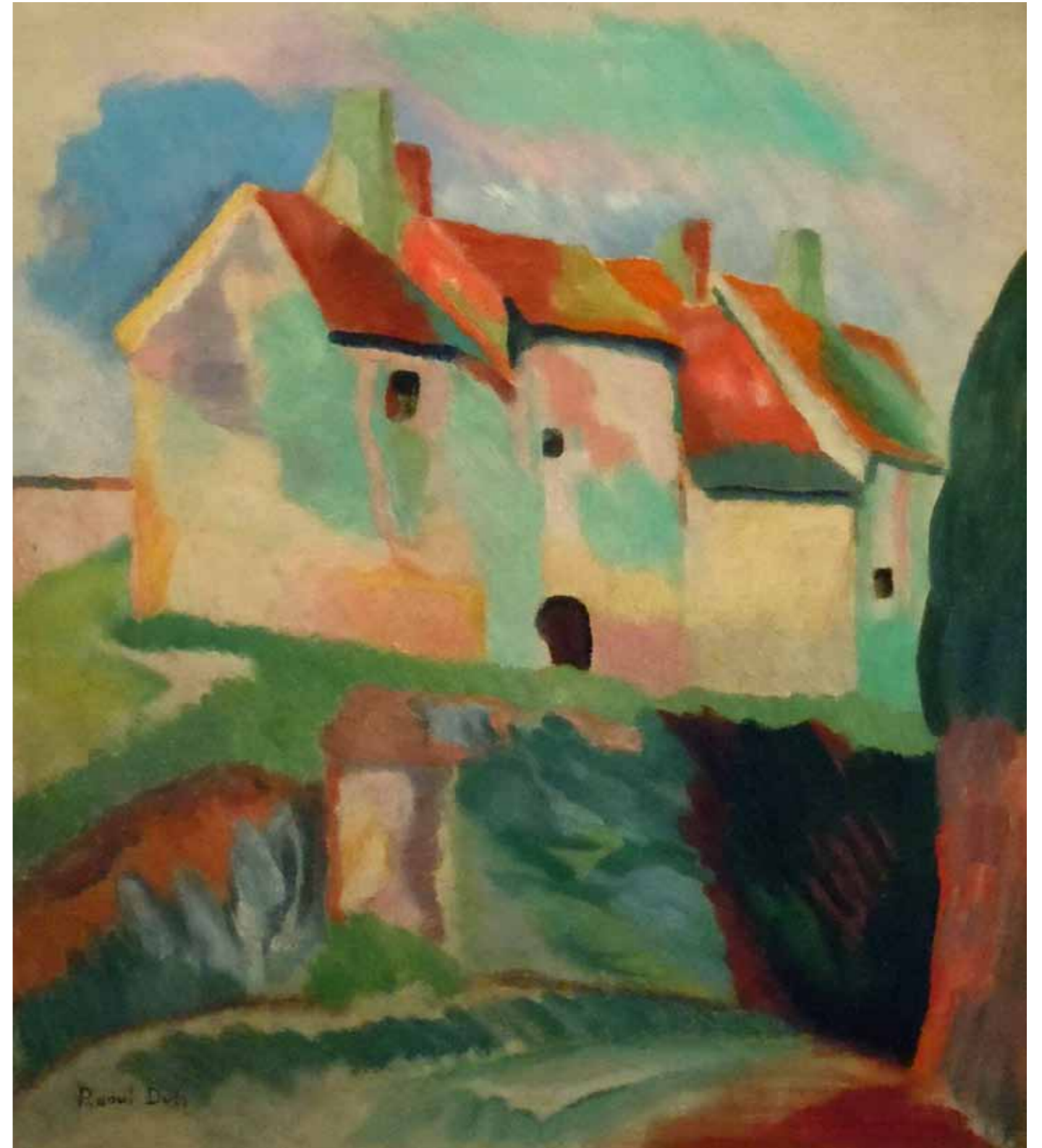
Signed 'Raoul Dufy' (lower left corner)
Oil on canvas
56 x 46 cm - 22 x 18.1 in.

PROVENANCE

Mme Raoul Dufy
Mr & Mrs J Josey, Huston
Galerie Maurice Sternberg, Chicago
Kathryn W. Hartzog (June 1975)

LITERATURE

Lafaille M. & Guillon-Lafaille F., Raoul Dufy : Catalogue Raisonné de L'Oeuvre Peint, Paris
Louis Carré et Cie, 1972-1985, vol. 1, No. 174, p.154, ill.



HENRI MATISSE
(1869 - 1954)

BUSTE DE FEMME, 1941

Signed and dated 'Henri Matisse 10/41' (lower right corner)
Pencil on paper
56,6 x 38,2 cm - 22.3 x 15 in.

PROVENANCE

Galerie d'Anjou, Paris
Private collection, France

CERTIFICATE

Wanda de Guébriant has confirmed the authenticity of this work



HENRI MATISSE
(1869 - 1954)

QUATRE ÉTUDES D'UNE BALLERINE, 1927

Signed with the initials 'HM' (lower left corner)

Pen and ink

24,1 x 31,8 cm - 9.5 x 12.5 in.

PROVENANCE

Estate of the artist

New Art Centre, London

CERTIFICATE

Wanda de Guébriant has confirmed the authenticity of this work



HENRI MATISSE
(1869 - 1954)

NU, VISAGE COUVERT

Signed 'H Matisse' (lower left corner)
Pencil on paper
27,6 x 37,8 cm - 10.9 x 14.9 in.

PROVENANCE

Pierre Matisse, New York, by descent from the artist
By descent from the above to the late owner

CERTIFICATE

Wanda de Guébriant has confirmed the authenticity of this work



GEORGES BRAQUE
(1882 - 1963)

LE POISSON, 1962

Signed 'G. Braque' (lower right corner)
Gouache on paper
56 x 76 cm - 22 x 29.9 in.

PROVENANCE
Marlborough Gallery, New York



ANDRÉ BRASILIER
(1929 -)

CAVALCADE DANS L'OCÉAN, 2010

Signed 'André Brasilier' (lower right)

Oil on canvas

114 x 146 cm - 44.9 x 57.5 in.



ANDRÉ BRASILIER
(1929 -)

PAMPA EN AUTOMNE, 2007

Signed 'André Brasilier' (lower right)
Oil on canvas
89 x 146 cm - 35 x 57.5 in.



ALEXANDER CALDER
(1898 - 1976)

UNTITLED

Gouache on paper
56 x 76 cm - 22 x 29.9 in.

CERTIFICATE

This work is registered in the archives of the Calder Foundation under the reference No. A06072



ALEXANDER CALDER
(1898 - 1976)

SPHERE ON FOUR PRONGS, 1969

Signed and dated 'Calder 69' (lower right corner)
Gouache on paper
107.9 x 74.9 cm - 42.5 x 29.5 in.

PROVENANCE

Perls Galleries, New York
Acquired from the above by the present owner

CERTIFICATE

This work is registered in the archives of the Calder Foundation under the reference No.
A06304



ALEXANDER CALDER
(1898 - 1976)

ROUGE ET BLEU, 1975

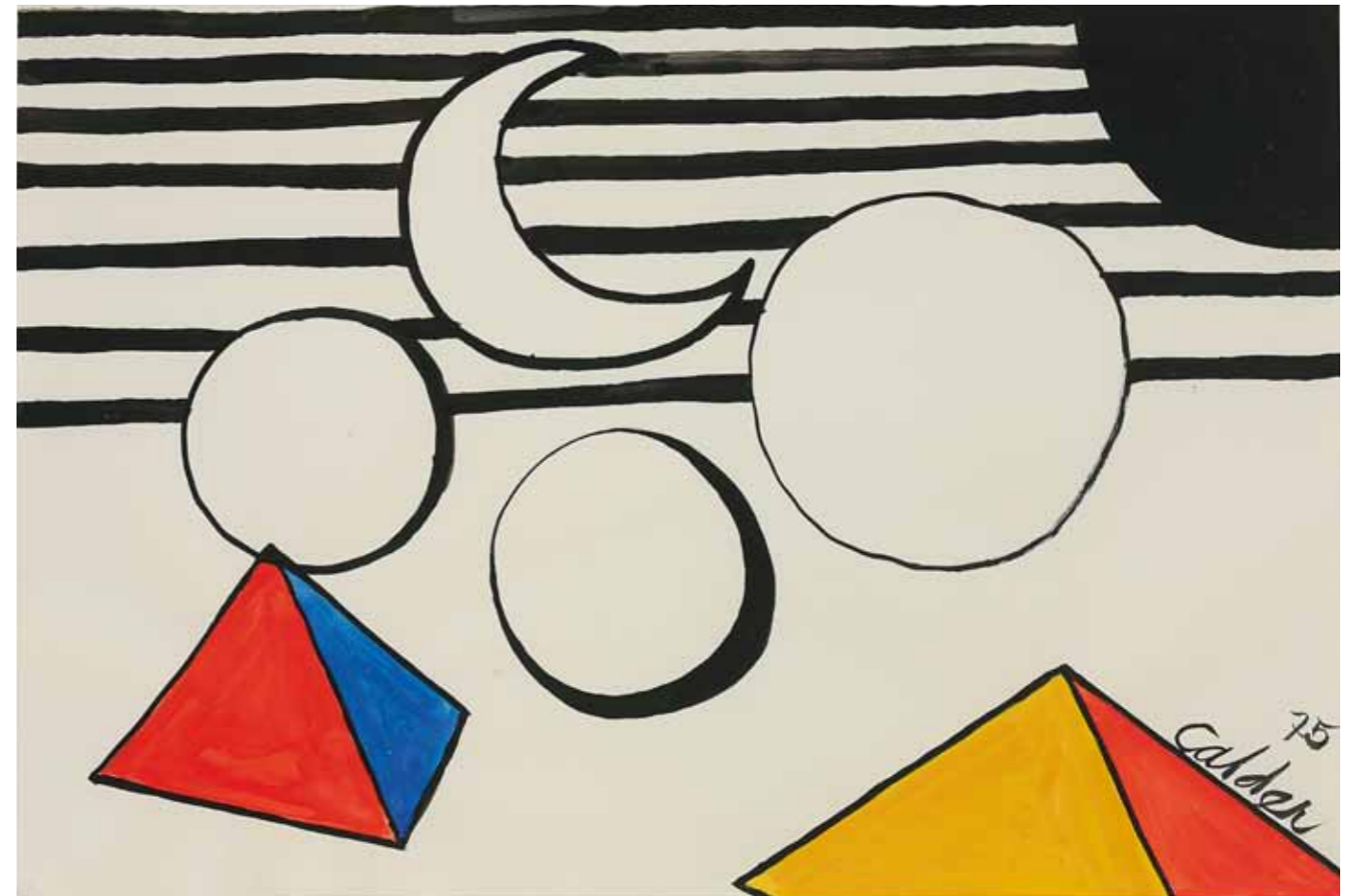
Signed and dated 'Calder 75' (lower right corner)
Gouache on paper
75 x 109,8 cm - 29.5 x 43.2 in.

PROVENANCE

Galerie Maeght, Paris
Martin Lawrence Galleries, Los Angeles
Mr. Bernie Abrams, Forest Hills, New York
Tamara Bane Gallery, West Hollywood
Private collection

CERTIFICATE

This work is registered in the archives of the Calder Foundation under the reference No.
A11657



JOAN MIRÓ
(1893 - 1983)

DANSEUSE, 1931

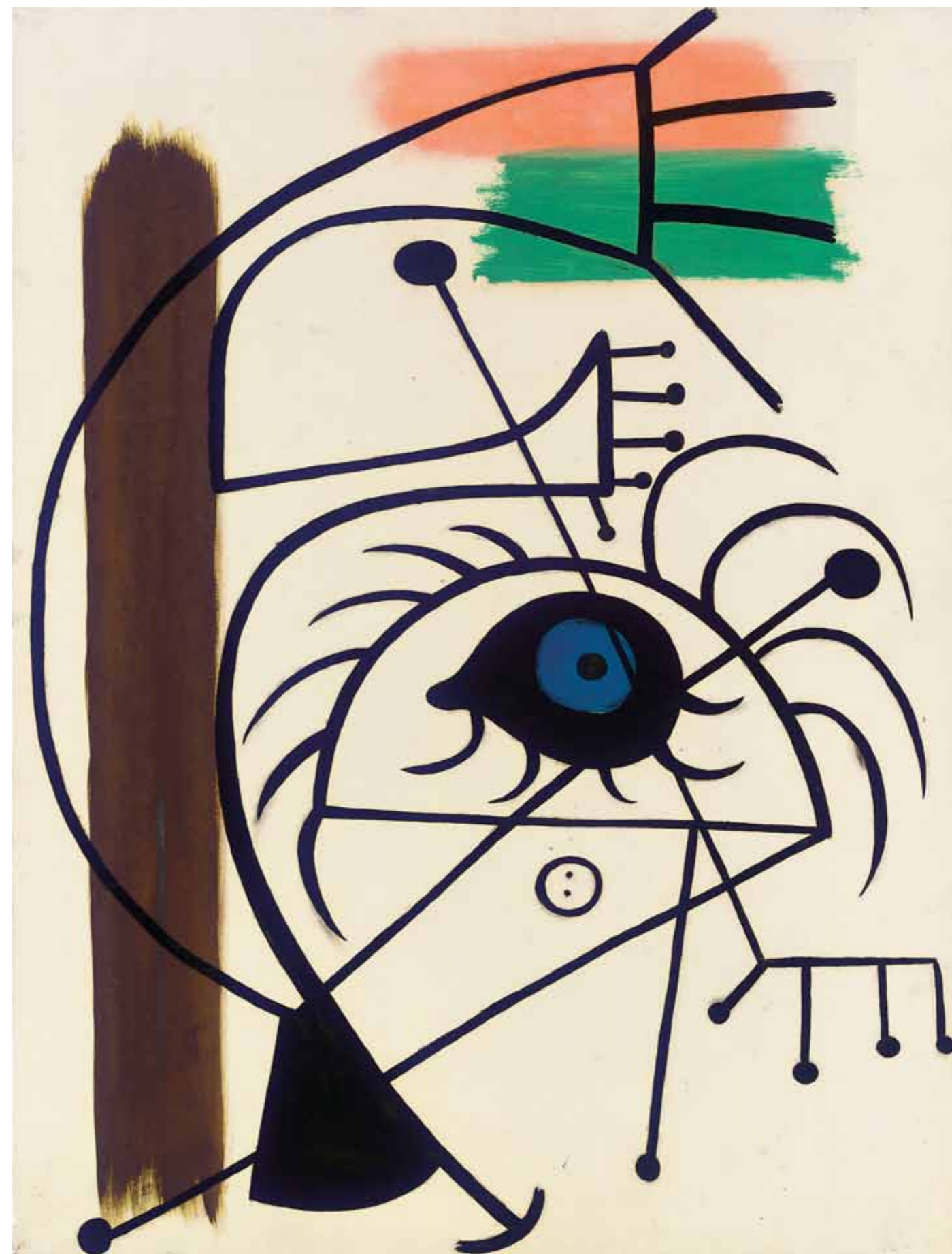
Signed, titled and dated 'Joan Miró "Danseuse" 9.31' (on the reverse)
Gouache and pastel on paper laid down on canvas
61,9 x 47 cm - 24.4 x 18.5 in.

PROVENANCE

Roger Dutilleul, Paris
Private collection, France (by descent from the above)
Acquired by the previous owner (circa 2005)

CERTIFICATE

Jacques Dupin has confirmed the authenticity of this work



JOAN MIRÓ

(1893 - 1983)

OISEAUX DANS L'ESPACE, 1960

Signed with the initial 'M' (lower left corner)

Signed, dated and inscribed 'MIRÓ 29/1/60 oiseaux dans l'espace' (on the reverse)

Mixed media on paper

50 x 65 cm - 19.7 x 25.6 in.

PROVENANCE

Galerie Beyeler, Basel (No. 7398)

Acquired from the above by the present owner (early 1980s)

CERTIFICATE

Jacques Dupin has confirmed the authenticity of this work



JOAN MIRÓ
(1893 - 1983)

UNTITLED, 1960

Signed with the monogram 'J.M.' (lower left corner)
Signed, dated and numbered 'Miró 15.11.60. IV/V' (on the reverse)
Oil on canvas
81 x 65 cm - 31.9 x 25.6 in.

PROVENANCE

Estate of the artist
Private collection (by descent from the above)
Acquired from the above by the present owner

LITERATURE

Jacques Dupin, Joan Miró, Flammarion, Paris, 1961, No. 918, ill. in an earlier state p. 554
Jacques Dupin, Miró, Paintings VI, 1976-1981, Paris, No. 1917, ill. in colour p. 151



JOAN MIRÓ
(1893 - 1983)

LES ESSENCIES DE LA TERRA - M.509

Signed 'Miró.' (lower right)
Black wax crayon over colour lithograph on Japan paper
50,2 x 36,2 cm - 19.8 x 14.2 in.

CERTIFICATE

ADOM (Association pour la défense de l'oeuvre de Joan Miró) has confirmed the authenticity of this work



FERNAND LÉGER

(1881 - 1955)

NATURE MORTE (UN VASE JAUNE), 1949

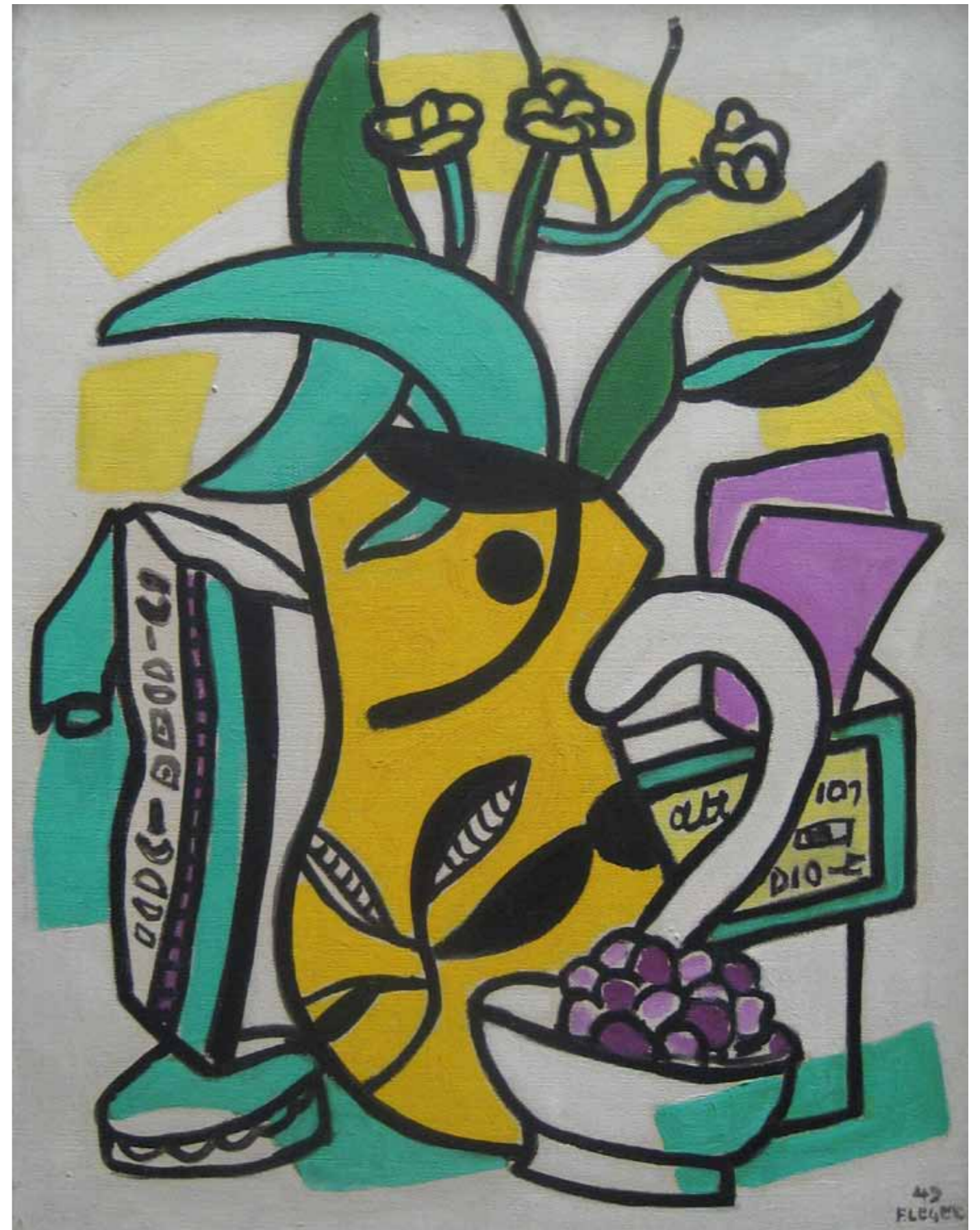
Signed and dated '49 F. LEGER' (lower right corner)
Oil on canvas
65,1 x 49,2 cm - 25.6 x 19.4 in.

PROVENANCE

Galerie Louise Leiris, Paris
Curt Valentin Gallery, New York
Private collection, Brussels

EXHIBITED

New York, Buchholz Gallery, Léger, 1950
Cincinnati Art Museum, 1952



FERNAND LÉGER

(1881 - 1955)

LA GRANDE PARADE, ÉTUDE, 1953

Signed with the initials and dated 'FL 53' (lower right corner)
Gouache, ink wash and watercolour on paper
54,5 x 71,6 cm - 21.5 x 28.2 in.

PROVENANCE

Michelle Rosenfeld Gallery, New York

PUBLIC NOTES

Étude pour La Grande Parade is one of the preparatory works for Léger's monumental masterpiece of 1954, *La Grande Parade*, now in the collection of the Solomon R. Guggenheim Museum in New York. It manifests Léger's method of tireless experimentation with the same themes in a wide spectrum of adaptations and interchanges. Léger recognized this process as salient to his output: 'The more I watch myself, the more I see that I am a classic. I do long preparatory work. First I do a quantity of drawings, then I do gouaches, and lastly I pass on to the canvas; but when I tackle that I have 80 percent assurance. I know where I'm going' (quoted in Werner Schmalenbach, *Fernand Léger*, London, 1991, p. 126).

Léger had been developing ideas for *La Grande Parade* since as early as 1940, with a highly finished drawing of acrobats and musicians, a theme to which he returned in the 1950s. In the preparatory series of *La Grande Parade* gouaches, the figures are variously juxtaposed beside climbing acrobats, horses, and wheels. For Léger, performance and the circus was a passion: 'If I have drawn circus people, acrobats, clowns, jugglers, it is because I have taken an interest in their work for thirty years... A year elapsed between the first state of *The Great Parade* and its final state. This interval corresponds to a lengthy process of elaboration and synthesis. The slightest transformation was long pondered and worked up with the help of new drawings. A local alteration often involved changing the entire composition because it affected the balance of the whole' (ibid., p. 126).



FERNAND LÉGER

(1881 - 1955)

NATURE MORTE, 1946

Signed and dated '46 F. LEGER' (lower right corner)
Oil on canvas
24 x 41 cm - 9.4 x 16.1 in.

PROVENANCE

Galerie Louis Carré, Paris
Galerie Blanche, Stockholm
Collection Sven e Gunnel Bergqvist, Djursholms, Sweden

LITERATURE

Bauquier G., Fernand Léger, Catalogue raisonné 1944-1948, Adrien Maeght Publisher, 2000, pp. 120-121



PABLO PICASSO

(1881 - 1973)

HOMME À LA PIPE, 1969

Signed and dated '27.2.69.I Picasso' (front upper left corner)
Oil on corrugated card laid down on cradled panel
97 x 65.7 cm - 38.2 x 25.9 in.

PROVENANCE

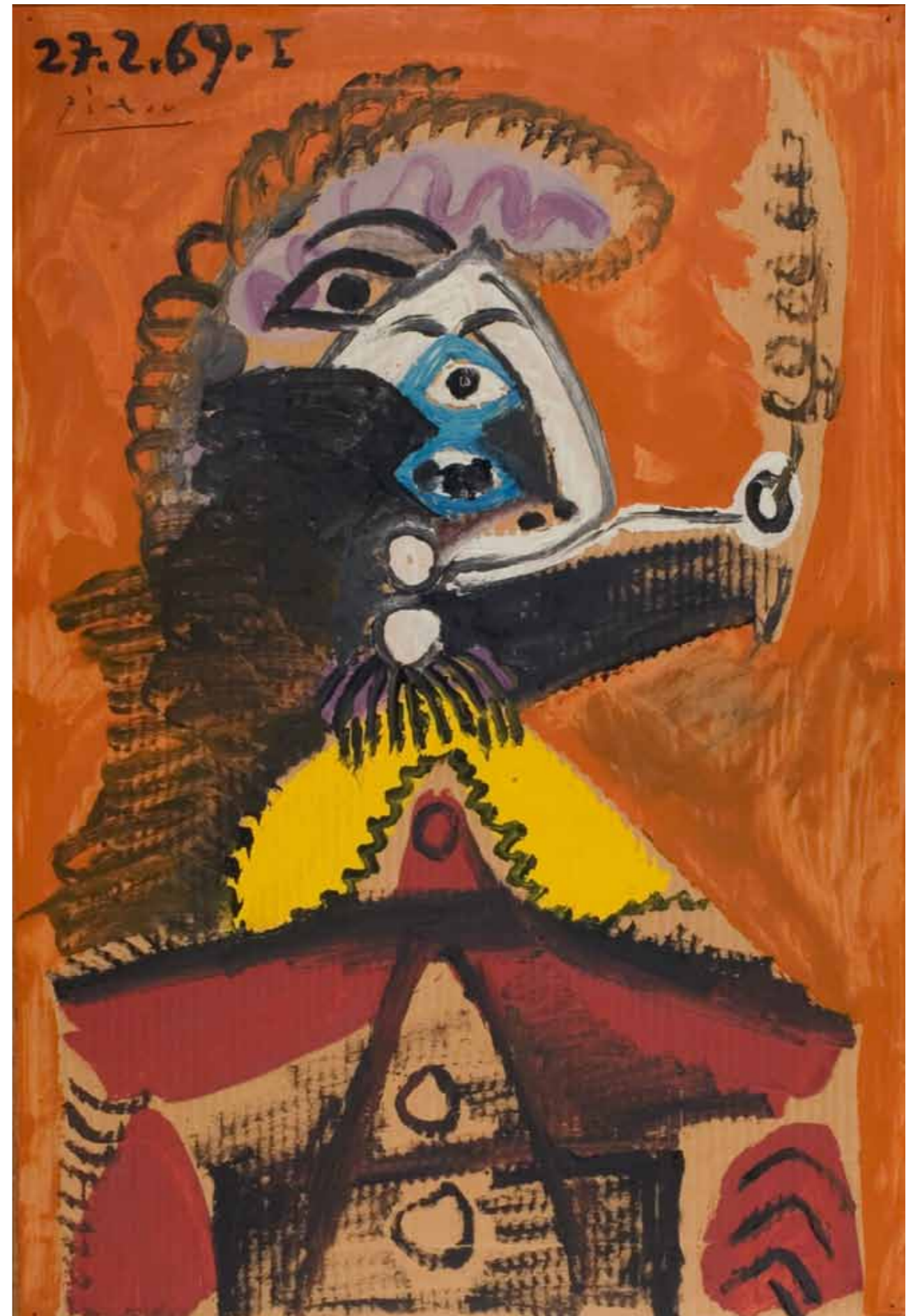
Galerie Louise Leiris, Paris (acquired from the artist)
Galerie Cahiers d'Art (Christian Zervos), Paris (acquired from the above)
Private collection, France, (acquired from the above July 23, 1969)

EXHIBITED

Hovikodden, Norway, Sonja Henies og Niels Onstads Kunstsentret, Picasso Visits Norway, 1992, No. 21
Salzburg, Festspielausstellung 2004, Salis and Vertes Gallery, June-July 2004, No. 30, ill. in colours
Masters of the West, Portakal Culture House, Istanbul, Dec. 10, 2004-Jan. 12, 2005, ill. in colour p. 57
Salzburg, Gallery Salis & Vertes, "Modern Masters", Aug. 1st-Aug 31st 2007, ill. in colour plat. 35

LITERATURE

Christian Zervos, Pablo Picasso, vol. 31 : oeuvres de 1969, Editions Cahiers d'Art, Paris, 1976, No. 85, ill. p. 27
Patrick-Gilles Persin, Daniel-Henri Kahnweiler, Paris, 1990, ill. p. 235
Weltkunst magazine, No. 9 Sept. 2004, ill. on the cover for the magazine and on p. 8, as illustration for the series of articles "Alte und Neue Kunst im Dialog" (Ancient and modern art in dialog)



PABLO PICASSO

(1881 - 1973)

NATURE MORTE AU BOUGEOIR ET À LA CRUCHE, 1937

Dated '29-1-37' (front lower left corner)

Oil on canvas

38.1 x 46 cm - 15 x 18.1 in.

PROVENANCE

Estate of the Artist

E. V. Thaw, New York

Vivian Horan, New York

EXHIBITED

Tel Aviv Museum of Art, Picasso, 3 Oct. 2002 - 2 Feb. 2003

LITERATURE

Picasso 1901-1971, Galerie Claude Bernard, 1980, No. 15, ill. in colour

Edward Quinn, Pierre Daix, The Private Picasso, 1987, ill. p. 151 and 159

The Picasso Project, Picasso's Paintings, Watercolors, Drawings and Sculpture. Spanish Civil War 1937-1939, San Francisco 1997, No. 37-023 (a), ill. p. 11



PABLO PICASSO

(1881 - 1973)

BROC ET VERRE, 1959

Signed 'Picasso' (upper right corner)
Dated and numbered 'V.16.17.4.59.I' (on the reverse)
Oil on canvas
92 x 73 cm - 36.2 x 28.7 in.

PROVENANCE

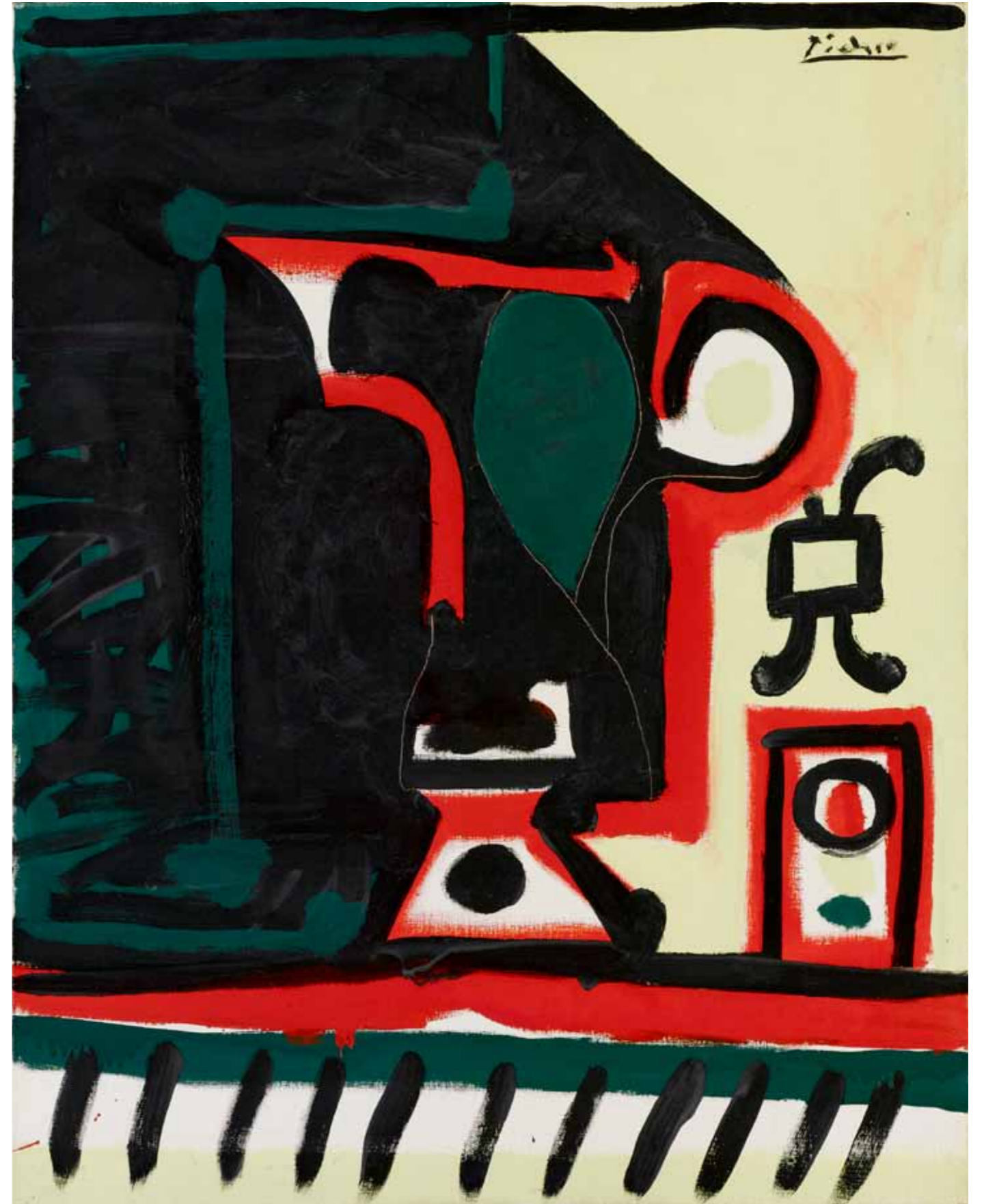
Galerie Louise Leiris, Paris, No. 11 (1962)
Galleria Seno, Milan, No. 11
Acquired from the above by the late owner (1980)

EXHIBITED

Sala Gaspar, Barcelona, 1960
Galerie Louise Leiris, Picasso, Peintures (Vauvenargues 1959-1961), Paris, 1962, No. 11

LITERATURE

Christian Zervos, Pablo Picasso, vol. 18 : oeuvres de 1958-1959, Editions Cahiers d'Art, Paris, 1967, No. 442, ill. p. 130
The Picasso Project, Picasso's Paintings, Watercolors, Drawings and Sculpture: The Fifties II 1956-1959, San Francisco, 2000, No. 59-136, ill. p. 315



PABLO PICASSO

(1881 - 1973)

LES MÉNINES ET LA VIE, 1960

Signed and dated 'Picasso le 6.6.60.' (towards upper right)

Inscribed 'pour A. Richter' (upper center)

Coloured crayon on paper bound in a volume of Picasso, *Les Ménines et la vie* by Jaime Sabartes

32,1 x 24,8 cm - 12.6 x 9.8 in.

PROVENANCE

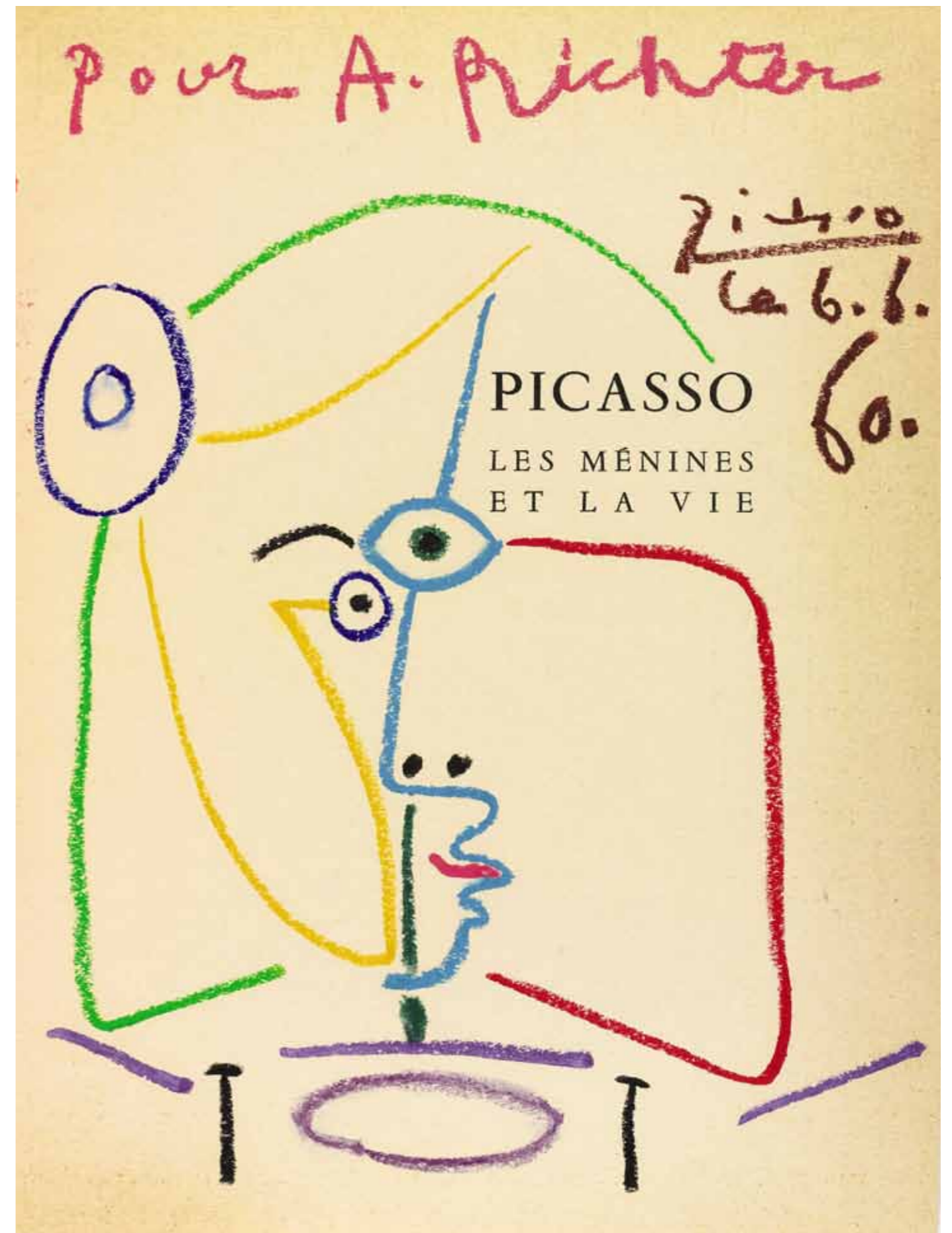
Albert Richter (acquired from the artist in 1960)

Private collection

CERTIFICATE

Claude Picasso has confirmed the authenticity of this work

Maya Widmaler-Picasso has confirmed the authenticity of this work



ANDRÉ LANSKOY
(1902 - 1976)

COMPOSITION SUR FOND NOIR

Gouache on paper
65 x 25 cm - 25.6 x 9.8 in.

PROVENANCE

Galerie Le Minotaure, Paris

CERTIFICATE

André Schoeller has confirmed the authenticity of this work



ANDRÉ LANSKOY

(1902 - 1976)

LES JOIES DES AUTRES, 1960

Signed 'LANSKOY' (lower right corner) ; titled in French and Russian, inscribed and dated 'les joies des autres Roquereine 60' (on the reverse)
Oil on canvas
97 x 146 cm - 38.2 x 57.5 in.

PROVENANCE

Galerie Louis Carré & Co., Paris
Svensk-Franska Galleriet, Stockholm
Acquired by the parents of the previous owner (in the 1960s)
Anon. sale, Christie's London, 5 February 2004, lot 114
Acquired at the above sale by the present owner

CERTIFICATE

This work will be included in the forthcoming André Lanskoj Catalogue raisonné being prepared by André Schoeller



GEORGES MATHIEU

(1921 -)

VAIRES, 1965

Signed and dated 'Mathieu 65' (lower right corner)

Oil on canvas

97 x 195 cm - 38.2 x 76.8 in.

PROVENANCE

Acquired from the artist by the previous owner (2006)

EXHIBITED

Paris, Galerie Charpentier, Mathieu, Oct.-Dec. 1965, No. 118 in the exhibition catalogue
Liege; Antwerp; Brussels; Ghent; Charleroi, Art Français Contemporain, Sept. 1966 -
Jan. 1967, No. 66 in the exhibition catalogue

Cologne, Kölnischer Kunstverein, Mathieu, Gemälde, Gouachen, Aquarelle, Collagen,
July-Sept 1967, No. 37 in the exhibition catalogue

LITERATURE

Mathieu G., Mathieu, Paris-Milan, 1969, No. 201, ill.



JEAN DUBUFFET
(1901 - 1985)

PERSONNAGE AU TEINT BLEU, 1974

Signed, dated and dedicated 'au docteur Yves Létang J. Dubuffet 74' (lower right corner)
Colour pencil and felt tip pen
32 x 25 cm - 12.6 x 9.8 in.

PROVENANCE
Dr Cetang collection
Private collection, Paris

LITERATURE
Catalogue des travaux de Jean Dubuffet, Fasc. XXIX, Les Editions de Minuit, Paris, 1979,
p. 11, No. 1



JEAN DUBUFFET

(1901 - 1985)

LE COUVERT, 1944

Signed and dated 'Dubuffet mai 44' (lower right corner)

Oil on canvas

72,5 x 91,5 cm - 28.5 x 36 in.

PROVENANCE

Galerie René Drouin, Paris

H. Hoppenot, Paris

Richard Feigen Gallery, New York

Acquavella Galleries, Inc., New York

Sale: Sotheby's, London, Contemporary Art, 29 June 1989, Lot 522

Waddington Galleries, Ltd., London

Private collection, Paris

EXHIBITED

Paris, Galerie René Drouin, Exposition de tableaux et dessins de Jean Dubuffet, 1944, No. 18

Paris, Compagnie de L'Art Brut, Les Statues de Silex de Mr. Juva, 1948

New York, Acquavella Galleries, Inc., Masters of the 20th Century, 1974, No. 3

LITERATURE

Max Loreau, Catalogue des Travaux de Jean Dubuffet, Fasc. I : Marionnettes de la ville et de la campagne, (1917-1945), Editions Jean-Jacques Pauvert, Paris, 1966, p. 138, No. 244, ill., republished by les Éditions de Minuit, Paris, 1993



JEAN DUBUFFET
(1901 - 1985)

RÉCHAUD-FOUR À GAZ V, 1966

Signed, dated and dedicated 'J. Dubuffet 66 pour André' (lower right corner)
Signed and dated 'J. Dubuffet réchaud-four à gaz V mars 66' (on the reverse)
Acrylic on Klegecell
116 x 89 cm - 45.7 x 35 in.

PROVENANCE

Acquired from the artist
Acquired by the present owner from the above

LITERATURE

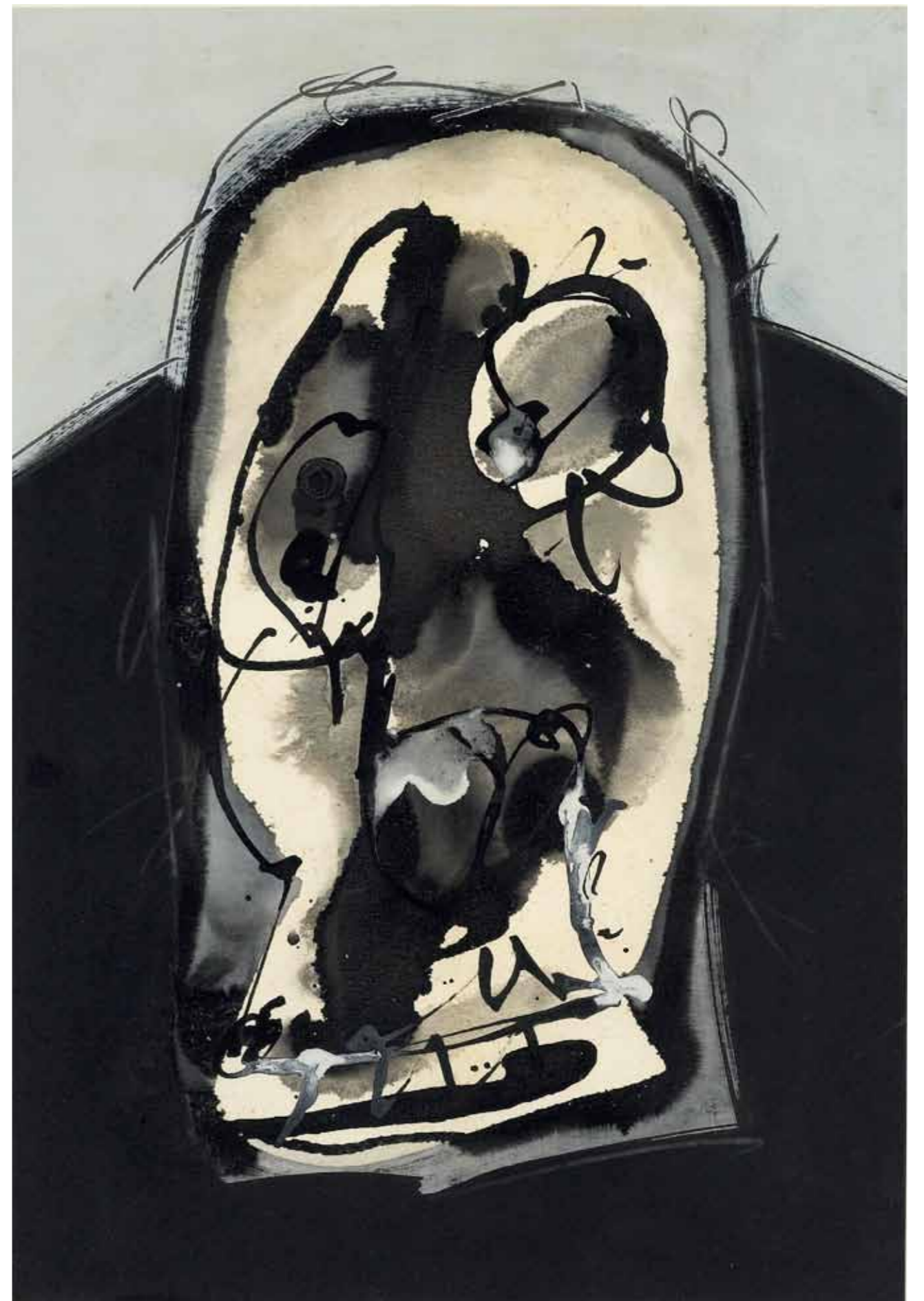
Max Loreau, ed., Catalogue des Travaux de Jean Dubuffet, l'Hourloupe II, Fasc. XXI,
Paris, 1968, No. 287, p. 160, ill.



ANTONIO SAURA
(1930 - 1998)

UNTITLED, 1977

Mixed media on board
44 x 33 cm - 17.3 x 13 in.



MARC CHAGALL

(1887 - 1985)

LE ROI DAVID, 1948-49

Signed 'Chagall Marc' (lower left corner)
Watercolour, brush, gray wash and India ink over charcoal on paper
51 x 35,6 cm - 20 x 14 in.

PROVENANCE

Fairweather Hardin Gallery, Chicago
Private collection, *circa* 1955 (acquired from the above)

CERTIFICATE

The Comité Marc Chagall has confirmed the authenticity of this work

PUBLIC NOTES

Study on the reverse of a village procession



MARC CHAGALL

(1887 - 1985)

APRÈS LA NAISSANCE, CIRCA 1975

Signed 'Chagall Marc' (lower right corner)

Tempera on board

41,3 x 33 cm - 16.3 x 13 in.

PROVENANCE

Private collection, Europe

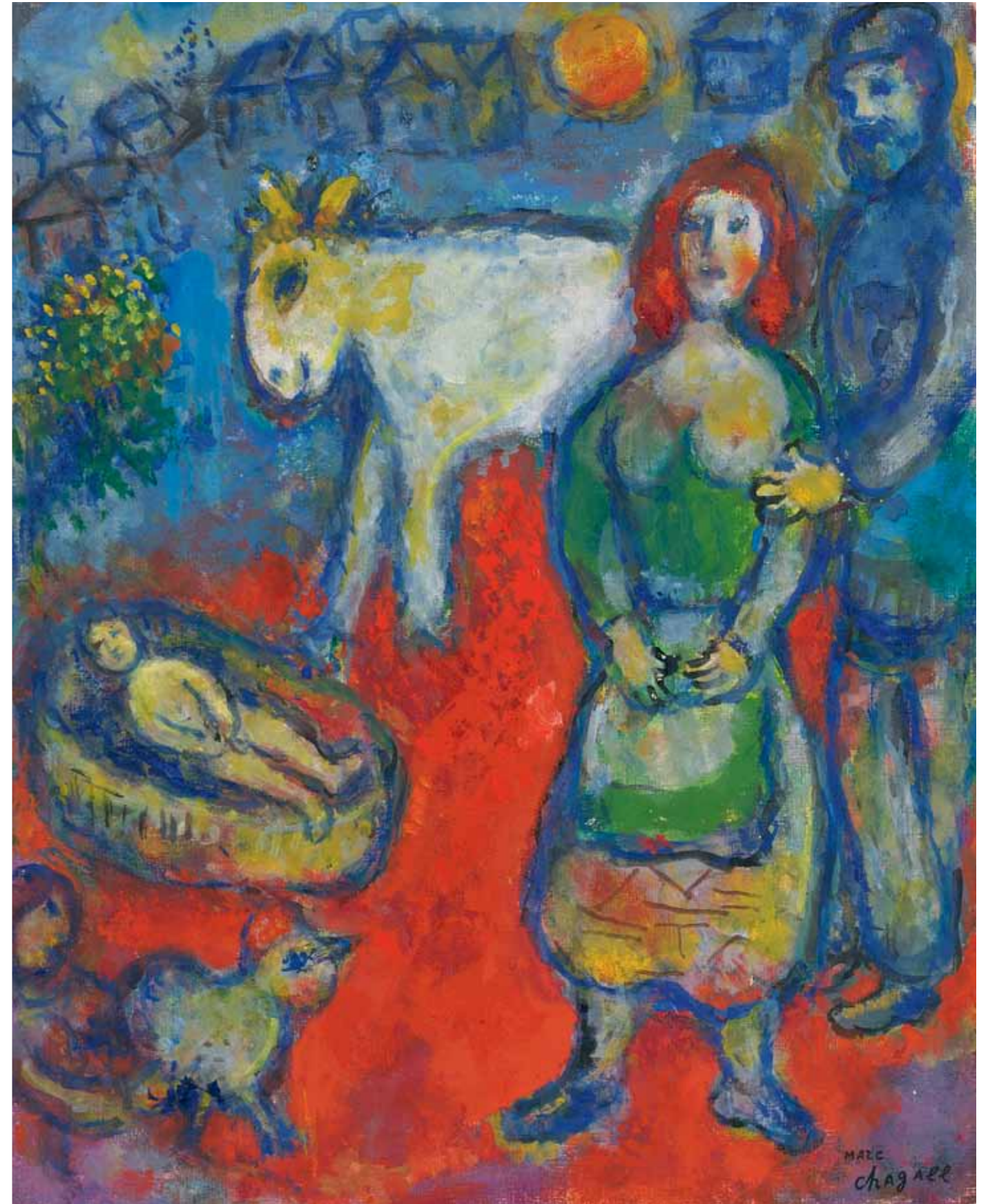
CERTIFICATE

The Comité Marc Chagall has confirmed the authenticity of this work

PUBLIC NOTES

Après la Naissance prominently displays several themes that are characteristic to Chagall's oeuvre and radiates with biographical significance. Returning to his hometown of Vitebsk in 1973 for the first time in over fifty years no doubt stirred strong emotions in Chagall, who spoke of the unusual circumstances surrounding his birth: "just at the moment of my birth in a little cottage near the road on the outskirts of Vitebsk, a great fire broke out behind a prison. The town was in flames" (Charles Sorlier, ed., *Chagall by Chagall*, New York, 1979, p.28). The energetic colour in *Après la Naissance* reveals the strong emotion the artist felt for his homeland.

In the present work, Chagall's collections of memories are articulated through some of his most cherished visual motifs. Chagall unites his trope of two lovers, the calf, the rooster, and the distant village in a single, vibrant composition. Pairs of lovers are featured throughout Chagall's oeuvre and are among the most important and symbolic cast of characters that appear in his paintings. The calf and the rooster, placed against the backdrop of a small town, recall the Russian countryside and Chagall's hometown of Vitebsk. The piece speaks to Chagall's nostalgia for his hometown and provides a lively example of Chagall's most well-known and beloved themes.



MARC CHAGALL

(1887 - 1985)

LA FIANCÉE RÊVANT, 1952

Signed 'Chagall Marc' (lower right)
Oil on canvas
56,5 x 52 cm - 22.2 x 20.5 in.

PROVENANCE

Galerie Rosengart, Lucerne
Galerie Beyeler, Basel
Anon. sale, Christie's, New York, 8 Nov. 1995, lot 291
Private collection, East Coast (acquired from above)

LITERATURE

Franz Meyer, Marc Chagall, Life and Work, New York, 1963, No. 880, ill.



FERNANDO BOTERO

(1932 -)

THE FAMILY, 2010

Signed 'Botero 10' (lower right corner)

Oil on canvas

146 x 176 cm - 57.5 x 69.3 in.

CERTIFICATE

Fernando Botero has confirmed the authenticity of this work



FERNANDO BOTERO

(1932 -)

HOMME À LA GUITARE ET CIGARETTE, 2003

Signed 'Botero 03' (lower right corner)

Oil on canvas

92,5 x 75,5 cm - 36.4 x 29.7 in.

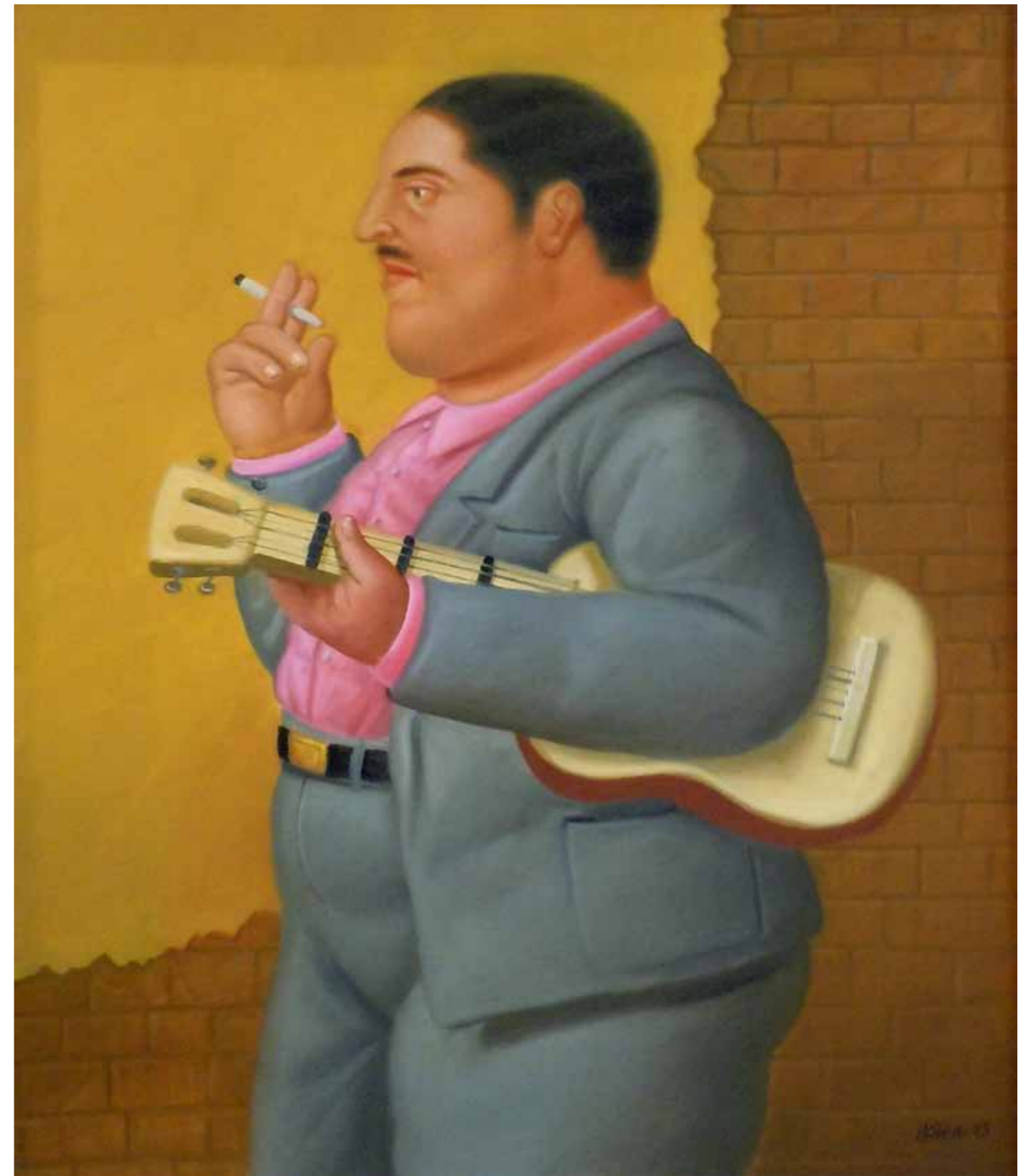
PROVENANCE

Acquired directly from the artist's studio

Private collection, Paris

CERTIFICATE

Fernando Botero has confirmed the authenticity of this work



BERNARD BUFFET

(1928 - 1999)

LE PONT MÉTALLIQUE, 1990

Signed 'Bernard Buffet' (upper left corner) and dated '1990' (upper right corner)
Oil on canvas
89 x 130 cm - 35 x 51.2 in.

CERTIFICATE

The authenticity of this work has been confirmed by Maurice Garnier



BERNARD BUFFET
(1928 - 1999)

FLEURS DANS UNE JARRE DE CHINE, 1999

Signed 'Bernard Buffet' (lower left corner) and dated '1999' (lower right corner)
Oil on canvas
100 x 73 cm - 39.4 x 28.7 in.

CERTIFICATE

The authenticity of this work has been confirmed by Maurice Garnier



BERNARD BUFFET

(1928 - 1999)

PAPILLON VERT ET ORANGE, 1987

Signed 'Bernard Buffet' (lower centre)

Oil on canvas

73 x 92 cm - 28.7 x 36.2 in.

CERTIFICATE

The authenticity of this work has been confirmed by Maurice Garnier



BERNARD BUFFET

(1928 - 1999)

NATURE MORTE AUX CAROTTES, 1977

Signed 'Bernard Buffet' (lower centre) and dated '1977' (lower right corner)

Oil on canvas

114 x 146 cm - 44.9 x 57.5 in.

CERTIFICATE

The authenticity of this work has been confirmed by Maurice Garnier



BERNARD BUFFET

(1928 - 1999)

LA CITÉ INTERDITE, LE PAVILLON DES SONS AGRÉABLES, 1995

Signed 'Bernard Buffet' (upper right corner) and dated '1995' (upper left corner)
Oil on canvas
114 x 146 cm - 44.9 x 57.5 in.

CERTIFICATE

The authenticity of this work has been confirmed by Maurice Garnier



ARMAN

(1928 - 2005)

VIOLON, 1979

Signed 'Arman' (lower centre)
Assemblage of burned violins, unique piece
75 x 50 cm - 29.5 x 19.7 in.

PROVENANCE
Franck Baille



ARMAN

(1928 - 2005)

STARRY NIGHT, 1995

Signed 'Arman' (lower right)
Acrylic with brush on canvas
95 x 135 cm – 37.4 x 53.1 in.

CERTIFICATE

Mrs Denyse Durand-Ruel has confirmed the authenticity of this work under the reference No. 2291
The Official Arman Studio New York archives has confirmed the authenticity of this work under the reference No. APA 8027.95.004



ARMAN

(1928 - 2005)

AQUA FREGO, 1999

Signed 'Arman' (lower right corner) and numbered (lower left)
Accumulation of paint tubes in plexiglas box, edition of 99
70 x 40 x 10 cm – 27.6 x 15.7 x 3.9 in.



ARMAN

(1928 - 2005)

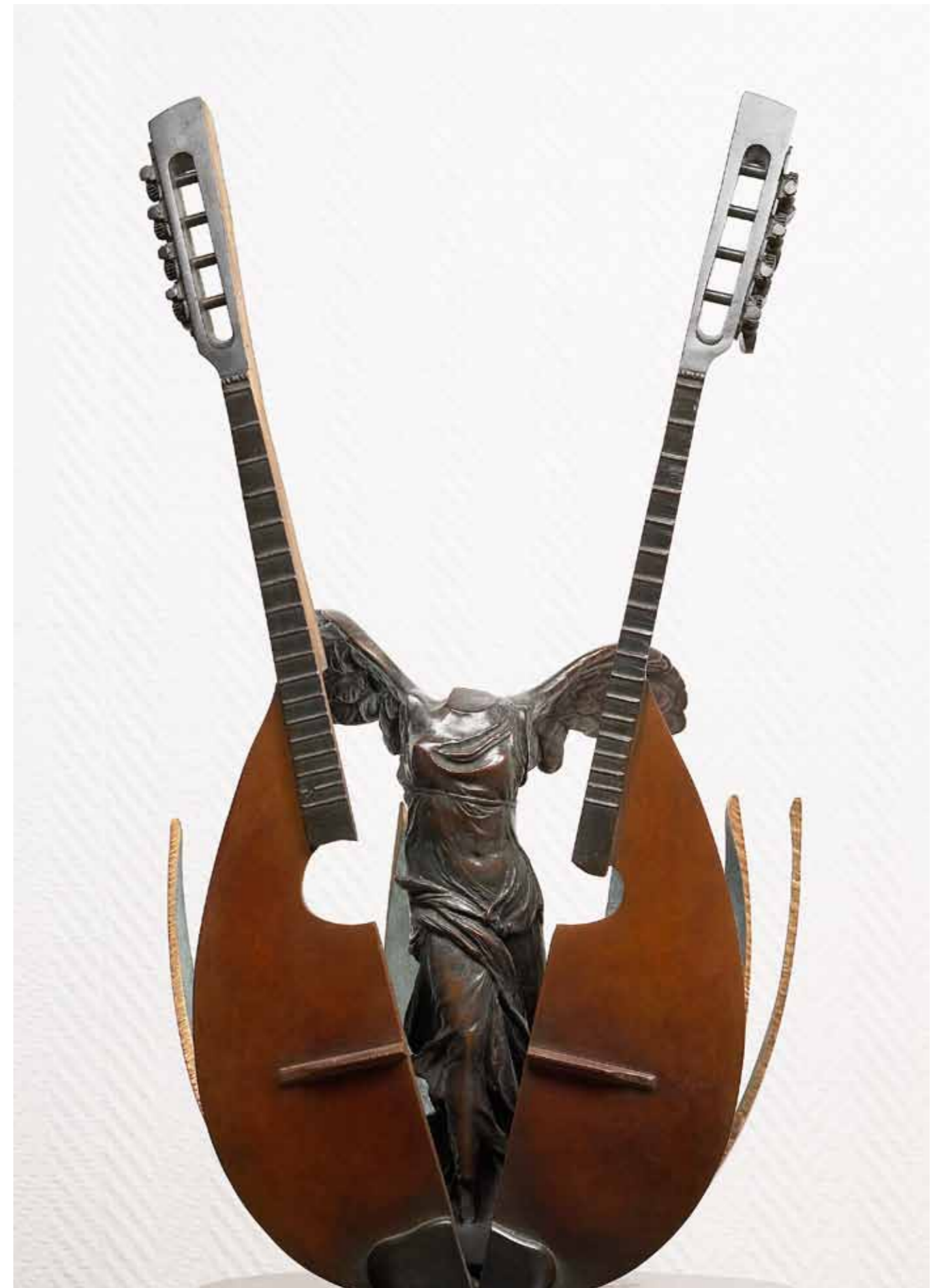
MANDOLINE

Signed 'Arman' (on the right side of the base)

Inscribed 'bocquel fd.' and numbered (on the back of the base)

Bronze, edition of 100

62 x 30 cm – 24.4 x 11.8 in.



SALVADOR DALÍ

(1904 - 1989)

THE LOVERS

Signed 'Dalí' (lower right)
Gouache on paper
30,9 x 24 cm - 12.2 x 9.4 in.

CERTIFICATE

Robert P. Descharnes and Nicolas R. Descharnes have confirmed the authenticity of this work



SALVADOR DALÍ

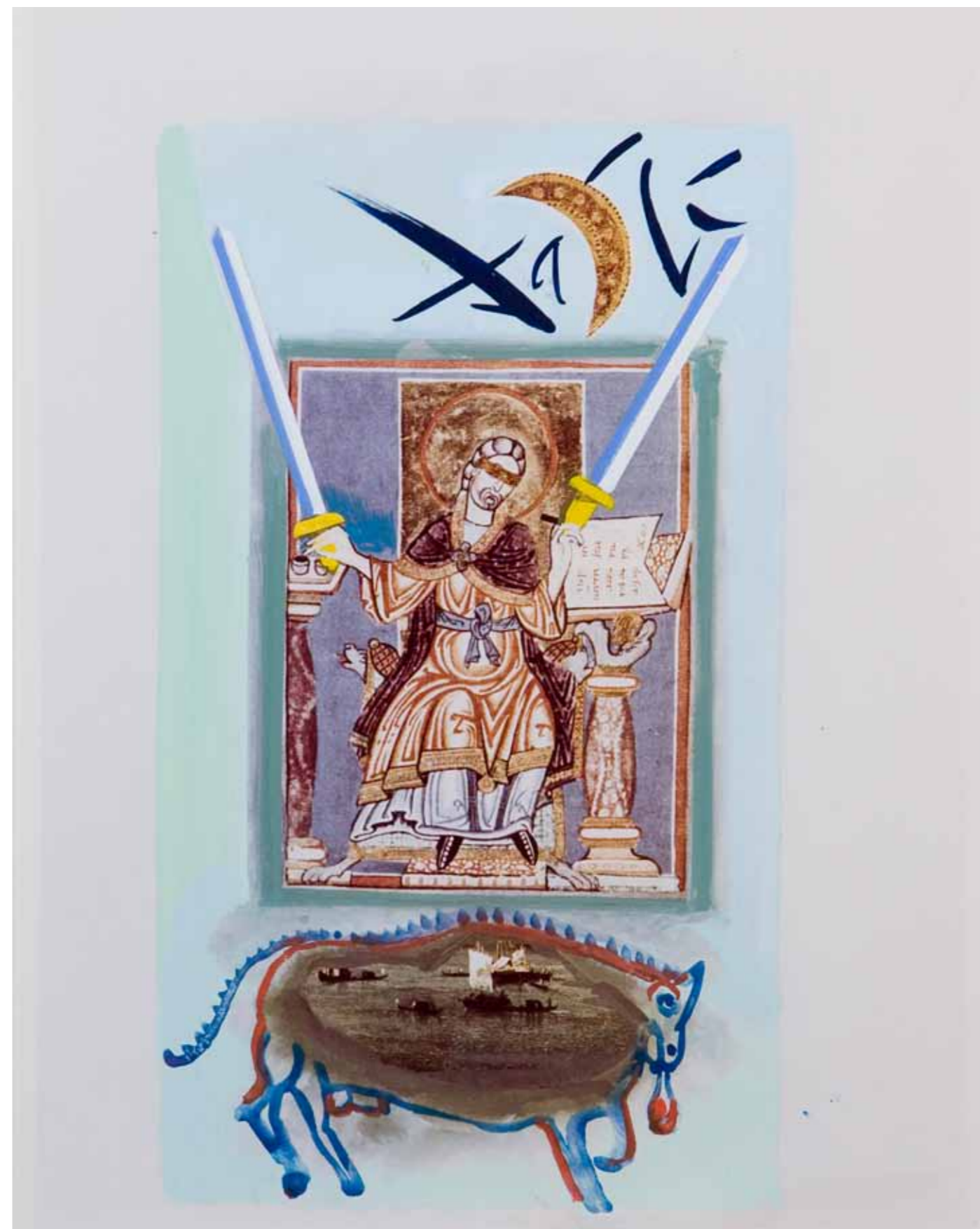
(1904 - 1989)

TWO OF SWORDS

Gouache on paper
30,9 x 24 cm - 12.2 x 9.4 in.

CERTIFICATE

Robert P. Descharnes and Nicolas R. Descharnes have confirmed the authenticity of this work



OPERA GALLERY

356 rue Saint-Honoré • 75001 Paris
T. + 33 (0)1 42 96 39 00 • paris@operagallery.com
www.operagallery.com