

OPERA GALLERY

An abstract painting with a warm, textured background. The colors transition from deep reds and oranges at the top to lighter, more muted tones towards the bottom. The text 'CALL ME ANGEL CHILE' is overlaid in a white, sans-serif font.

CALL ME  
ANGEL CHILE

Kiaf SEOUL

04 – 08 September 2024

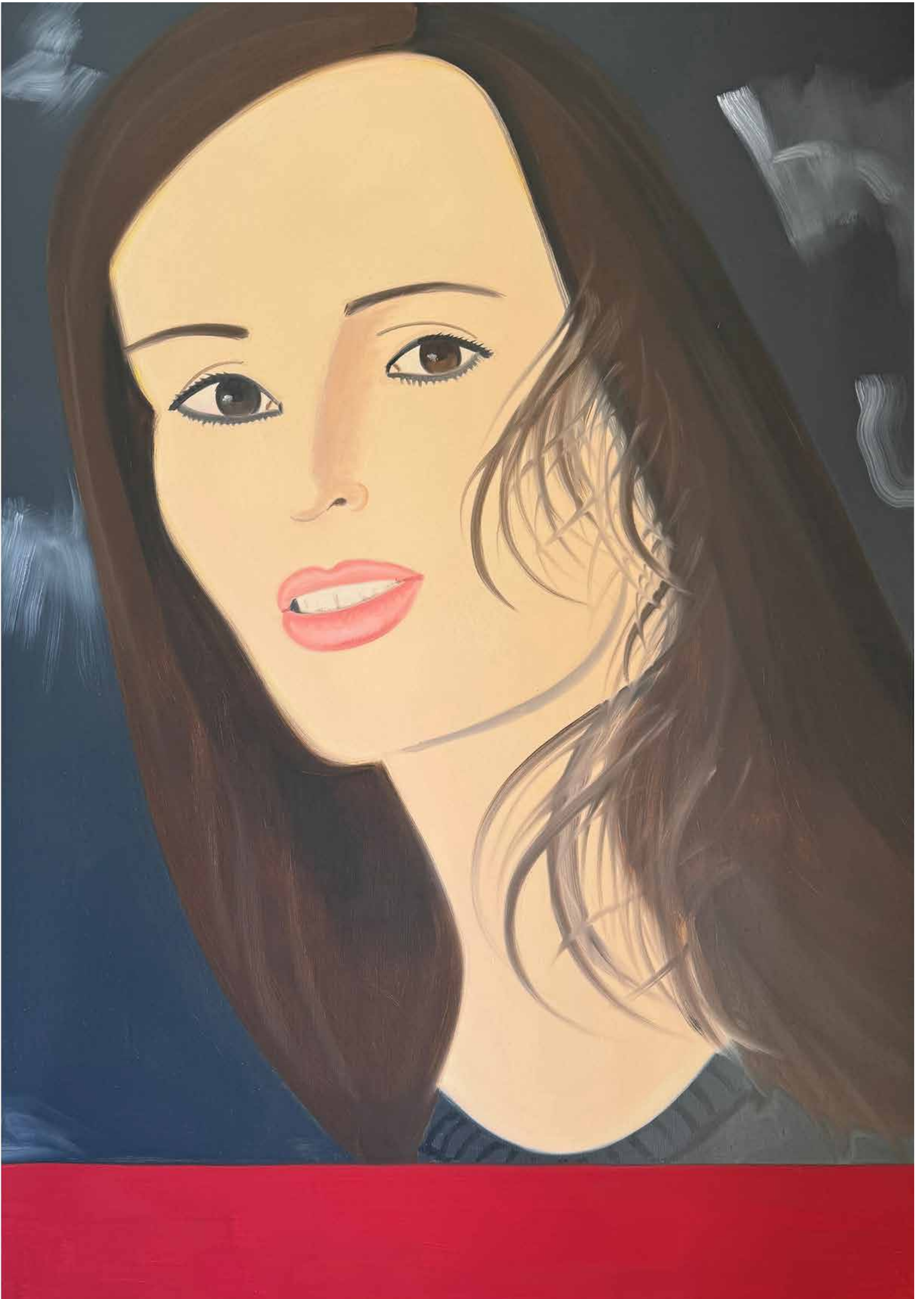
Booth G04

Coex Exhibition Centre  
513, Yeongdong-daero, Gangnam-gu, Seoul, South Korea

## Featuring

Alex Katz  
Yayoi Kusama  
Frank Stella  
Ed Ruscha  
Mel Bochner  
Manolo Valdés  
Cho Sung-Hee  
Fred Eerdekens  
George Condo  
Julian Opie





**Alex  
Katz**  
b. 1927

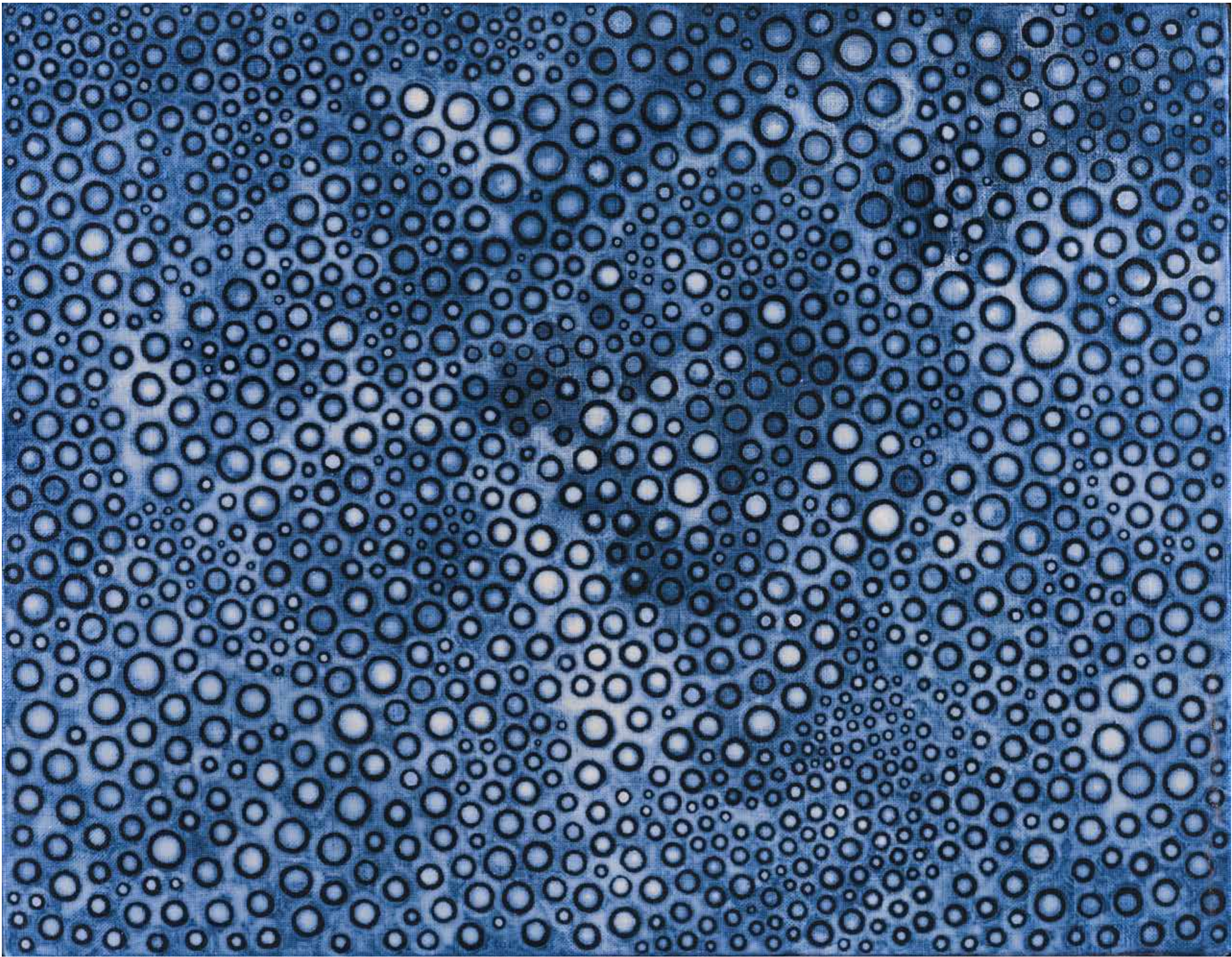
*Maria*  
1997

Oil on linen  
Signed and dated '97' on the overlap; signed again  
on the stretcher

182,9 x 106,7 cm | 72 x 42 in

PROVENANCE  
Marlborough Gallery, New York, USA  
Private collection, February 1999





**Yayoi  
Kusama**  
b. 1929

*Infinity Dots*  
2003  
  
Acrylic on canvas  
Signed, dated and titled in English and Japanese  
'Yayoi Kusama / 2003 / INFINITY DOTS' on the  
reverse

31,8 x 41 cm | 12.5 x 16.1 in

PROVENANCE  
Gallery Sekiryu, Nagano, Japan  
Mainichi Auction, Tokyo, 11 March 2017, lot 249  
Private collection  
Sotheby's, Hong Kong, 8 June 2018, lot 129  
Private collection  
  
CERTIFICATE  
Yayoi Kusama Inc. has confirmed the authenticity of this work.





**Frank  
Stella**  
1936 – 2024

*Niveau 1A*  
2001

Painted cast metal

154,9 x 182,9 x 45,7 cm | 61 x 72 x 18 in

PROVENANCE  
Collection of the artist  
Private collection  
Westwood Gallery, New York, USA  
Private collection





**Ed  
Ruscha**  
b. 1937

*CALL ME ANGEL CHILE*  
2001

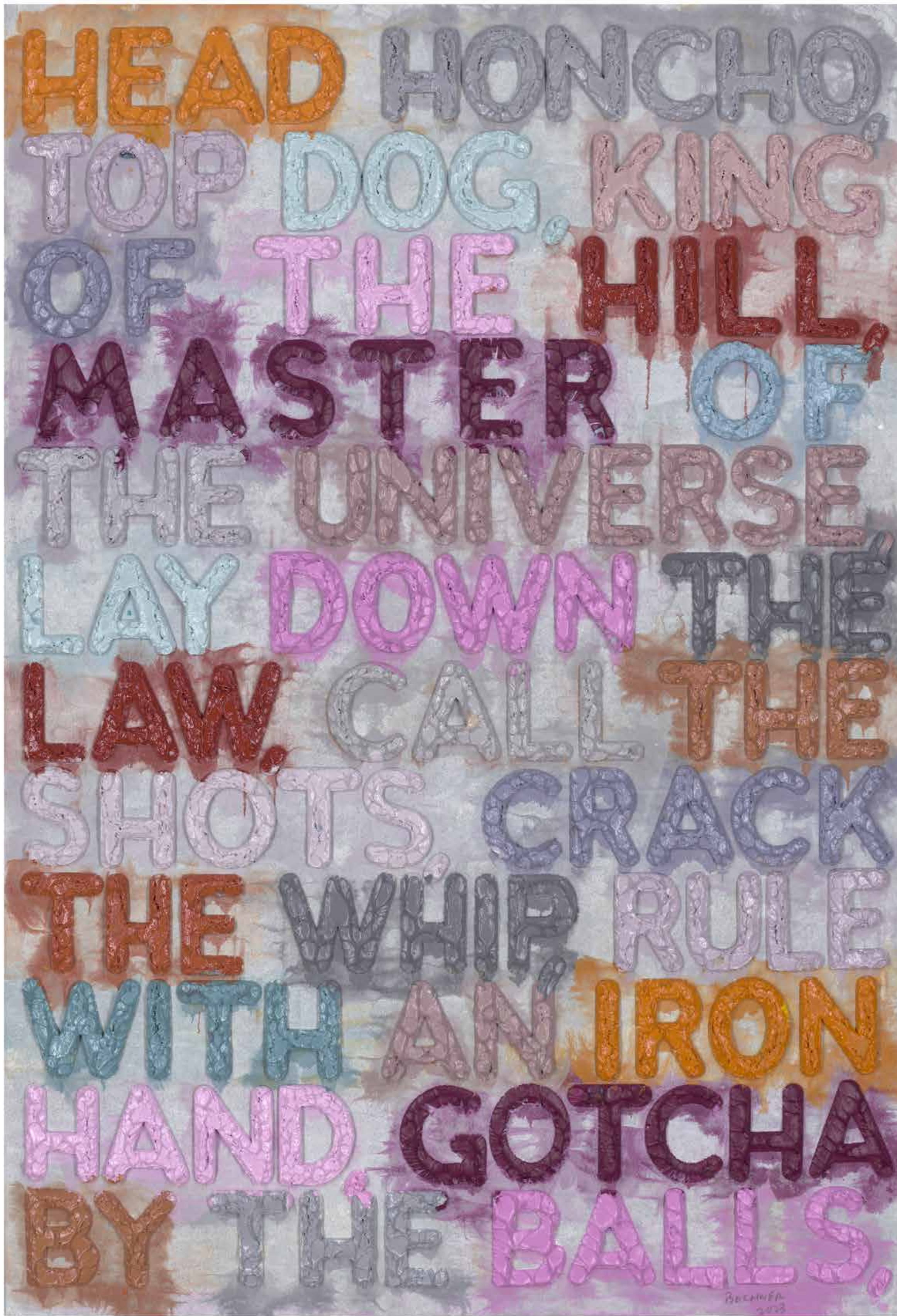
Acrylic on canvas  
Signed and dated 'Ed Ruscha / 2001' on reverse

101 x 137 cm | 39.8 x 53.9 in

PROVENANCE  
Patrick Painter Gallery, Santa Monica, USA  
Private collection, Belgium  
Private collection, Switzerland, 2020

LITERATURE  
Robert Dean, *Edward Ruscha Catalogue raisonne of the paintings, Volume six: 1998-2003*, Gagosian Gallery, New York, 2013, ill. in colour pp. 220-221





**Mel  
Bochner**  
b. 1940

*Head Honcho*  
2023

PROVENANCE  
Artist's studio

Monoprint in oil with collage, engraving and  
embossment on handmade paper  
Signed and dated 'BOCHNER / 2023' on the  
lower right

75,6 x 52,1 cm | 29.8 x 20.5 in





**Manolo  
Valdés**  
b. 1942

*Matisse Como Pretexto con Verde*  
2019

Oil, enamel, plastic and wood on panel  
Signed, titled and dated 'M VALDES / MATISSE  
COMO PRETEXTO CON VERDE / 2019' on  
the reverse

182,9 x 152,4 cm | 72 x 60 in

PROVENANCE  
Artist's studio  
Opera Gallery, Paris, France  
Private collection, 2020

CERTIFICATE  
The artist has confirmed the authenticity of this work.





**Manolo  
Valdés**  
b. 1942

*Glass Butterflies I*  
2022

Glass and polychromated steel  
Unique piece  
Signed and inscribed 'MV / AG' on the back of the  
head

124,5 x 48,3 x 45,7 cm | 49 x 19 x 18 in

PROVENANCE  
Artist's studio





**Manolo  
Valdés**  
b. 1942

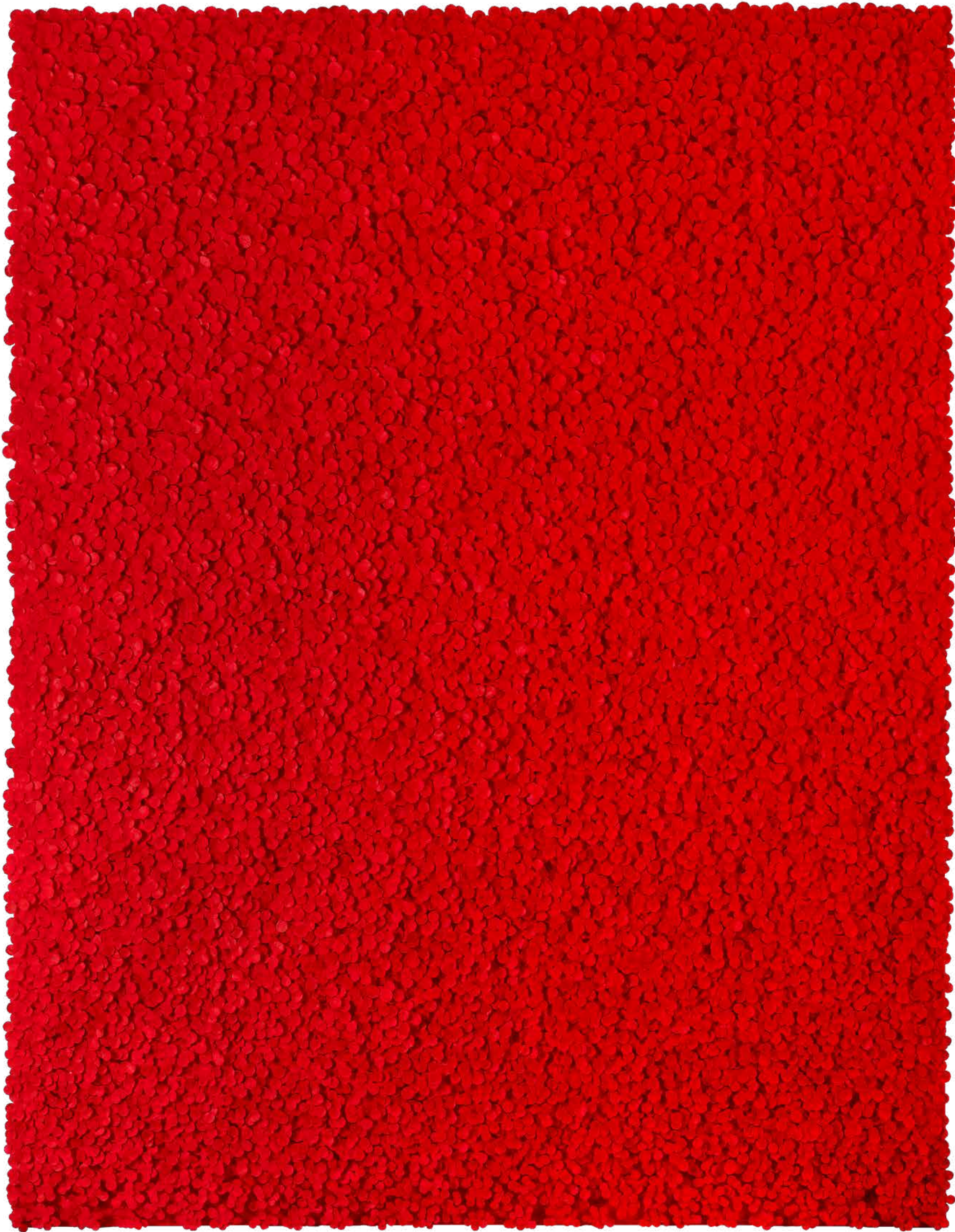
*Reina Mariana*  
2019

Resin with pigment  
Edition: 2/8

173 x 123 x 87 cm | 68.1 x 48.4 x 34.3 in

PROVENANCE  
Artist's studio





**Cho  
Sung-Hee**  
b. 1949

*Red Blossom A*  
2023  
  
Collage, korean rice paper with oil on canvas  
Signed, titled and dated on the reverse  
  
145 x 122 cm | 57.1 x 48 in

PROVENANCE  
Artist's studio





**Cho  
Sung-Hee**  
b. 1949

*Naive Blossom B*  
2023  
Collage, korean rice paper with oil on canvas  
Signed, titled and dated on the reverse  
145 x 112,2 cm | 57.1 x 44.2 in

PROVENANCE  
Artist's studio





**Fred  
Eerdekens**  
b. 1951

*Shade*  
2023  
Copper  
Unique piece

37 x 17 x 17 cm | 14.6 x 6.7 x 6.7 in

PROVENANCE  
Artist's studio





**George  
Condo**  
b. 1957

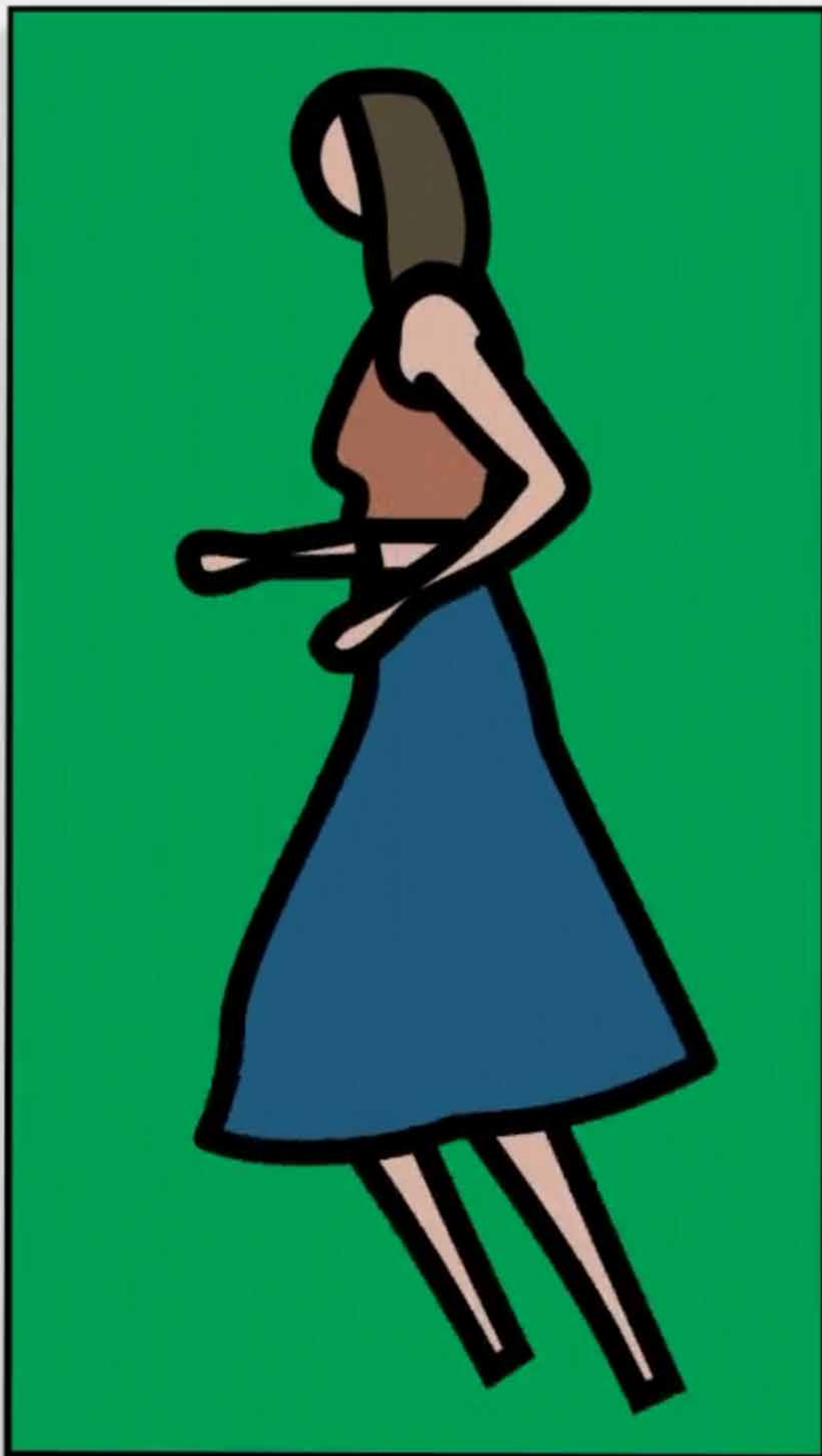
*Black Standing Figures*  
2000

Oil, oilstick, acrylic and chalk on canvas

152,1 x 253,7 cm | 59.9 x 99.9 in

PROVENANCE  
Artist's studio  
Private collection, New York, USA  
Artcurial, Paris, 21 April 2009, lot 366  
Pace Wildenstein, New York, USA  
Private collection  
Christie's, London, 17 February 2011, lot 266  
Simon Lee Gallery, London, UK  
Private collection, Europe  
Phillips, Hong Kong, 27 May 2018, lot 41  
Private collection





**Julian  
Opie**  
b. 1958

*Kiri*  
2019

Continuous computer animation on a  
55" LCD screen  
Edition: 3/4  
Signed and numbered on the reverse

128 x 75 x 7,3 cm | 50.4 x 29.5 x 2.9 in

PROVENANCE  
Artist's studio  
Private collection





**Julian  
Opie**  
b. 1958

*Teresa John Amy Tim.*  
2022

Cut acrylic overlaid on acrylic panel  
Signed on the reverse

90 x 93 x 4,4 cm | 35.4 x 36.6 x 1.7 in

PROVENANCE  
Artist's studio  
Private collection



# OPERA GALLERY

## **Opera Gallery at Kiaf SEOUL**

04 – 08 September 2024

Booth G04

Coex Exhibition Centre

513, Yeongdong-daero, Gangnam-gu, Seoul, South Korea

## **VIP Admission**

Wednesday 4 September: 11am – 3pm

## **General Admission**

Wednesday 4 September: 3 – 7pm

Thursday 5 September: 11am – 7pm

Friday 6 September: 11am – 7pm

Saturday 7 September: 11am – 7pm

Sunday 8 September: 11am – 6pm

## **Opera Gallery Seoul**

18, Eonju-ro 154 gil, Gangnam-gu 06021

seoul@operagallery.com

T. +82 2 3446 0070