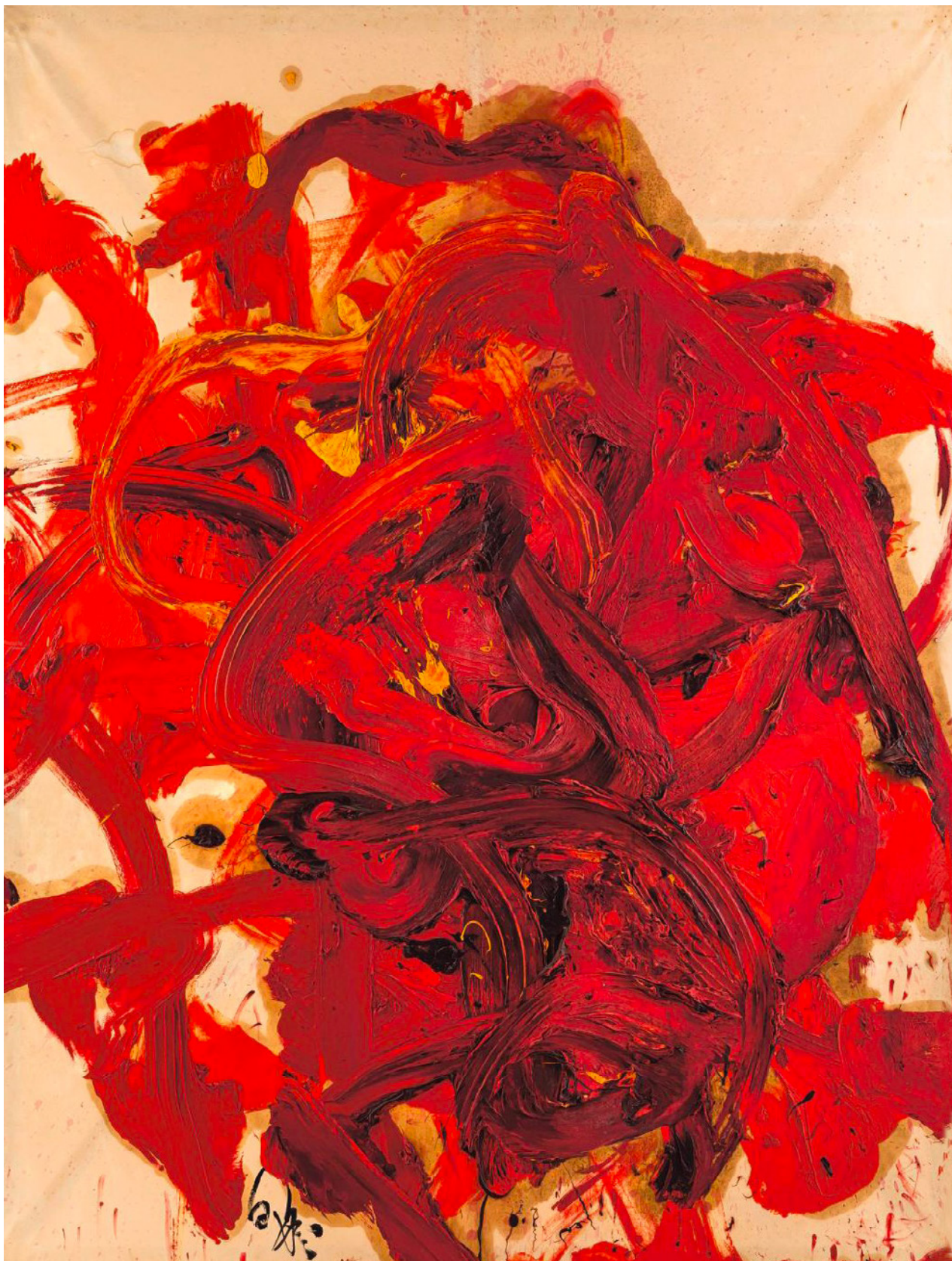


An abstract painting featuring thick, expressive brushstrokes in vibrant red, orange, and black. The composition is dynamic and textured, with swirling and layered colors. The text is overlaid on the upper portion of the artwork.

# BRAFA ART FAIR

19 - 26 June 2022 | STAND 84

OPERA GALLERY



**Kazuo Shiraga**

*Purpu*, 1987 | 1988

Oil on japan paper laid on silk  
250 x 190 cm | 98.4 x 74.8 in

[Enquire](#)



**Simon Hantai**

*Tabula*, 1980

Acrylic on linen

111.5 x 213 cm | 43.9 x 83.9 in

[Enquire](#)



**Antoni Tàpies**

*Negro con óvalo (Black Oval), 1981*

Mixed media on wood

130 x 162 cm | 51.2 x 63.8 in

[Enquire](#)





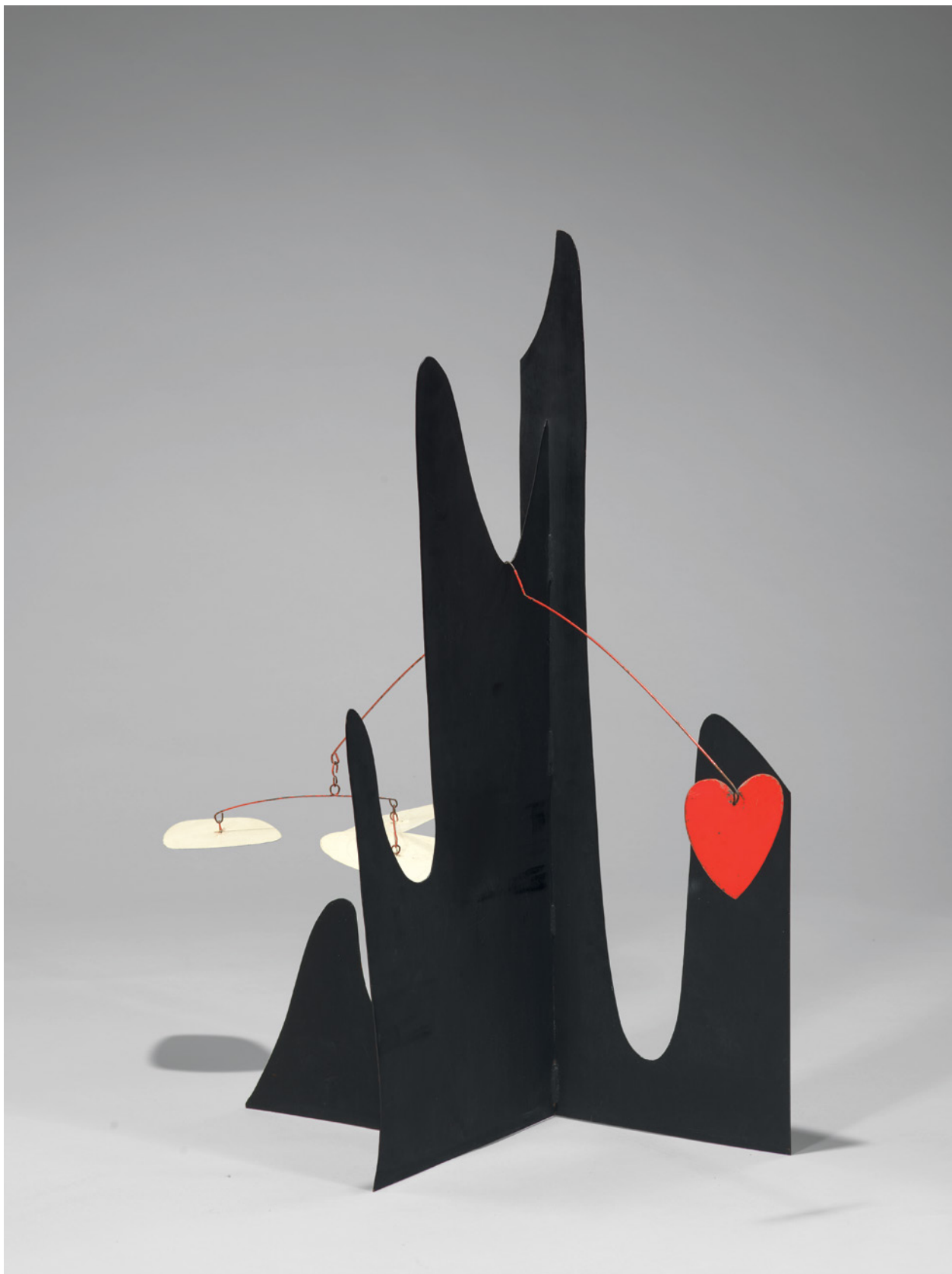
**Antonio Saura**

*Les trois grâces, 1997*

Oil on canvas

195 x 97 cm | 76.8 x 38.2 in

[Enquire](#)



**Alexander Calder**

*Crag with Red Heart*, 1974

Painted metal and wire

108 x 111 x 68.5 | 42.5 x 43.7 x 27 in

[Enquire](#)

# Alexander Calder

## *Crag with Red Heart, 1974*

*Crag with Red Heart* stakes a concrete claim by invoking the universal symbol of love in place of abstract forms. While the heart exists as the physical source of life, it also asserts itself as the emotional well out of which fervour and feeling flood. Hanging in delicate equilibrium with the three saucers, Calder's heart reveals the tension pursuant to any passion - the beloved weighed against the obliged, the dreaming conflict with reality. Although Calder surrenders interpretation to the viewer in real time, this Crag suggests the inescapable struggle each human undergoes when deciding a life course. Like the crag itself, such a course is seldom linear and rarely complete. Thus, this intimate stabile is as much about what is missing as what is present. The figure-ground concerns introduced by the black foundation and echoed by the wire balancing mechanism allude to the spaces carved in one's heart by love lost and found. In so doing, the work renders itself whole yet again - a microcosm of choices, triumphs, and failures on courageous, vulnerable display.



**Alexander Calder**

*Bunny Eared Horse, 1971*

Gouache and ink on paper  
78.1 x 57.8 cm | 30.7 x 22.8 in

[Enquire](#)



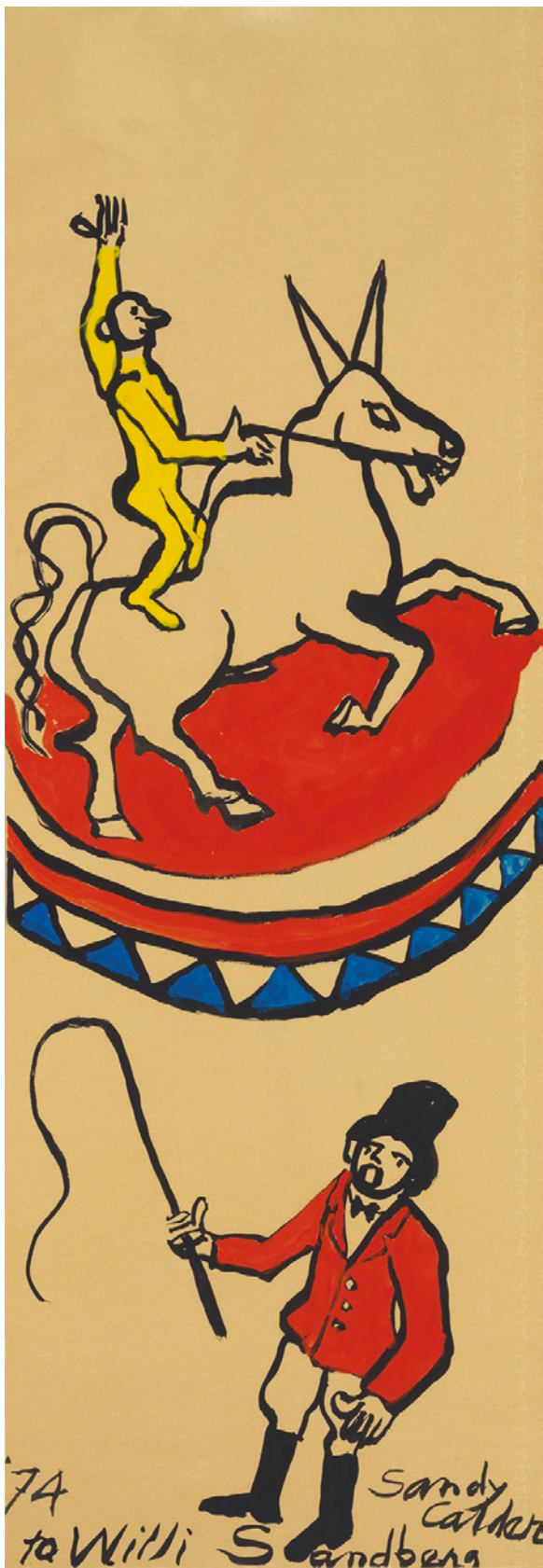


**Alexander Calder**

*Little Jester*, 1964

Ink and pencil on paper  
37.5 x 27.3 cm | 14.8 x 10.7 in

[Enquire](#)



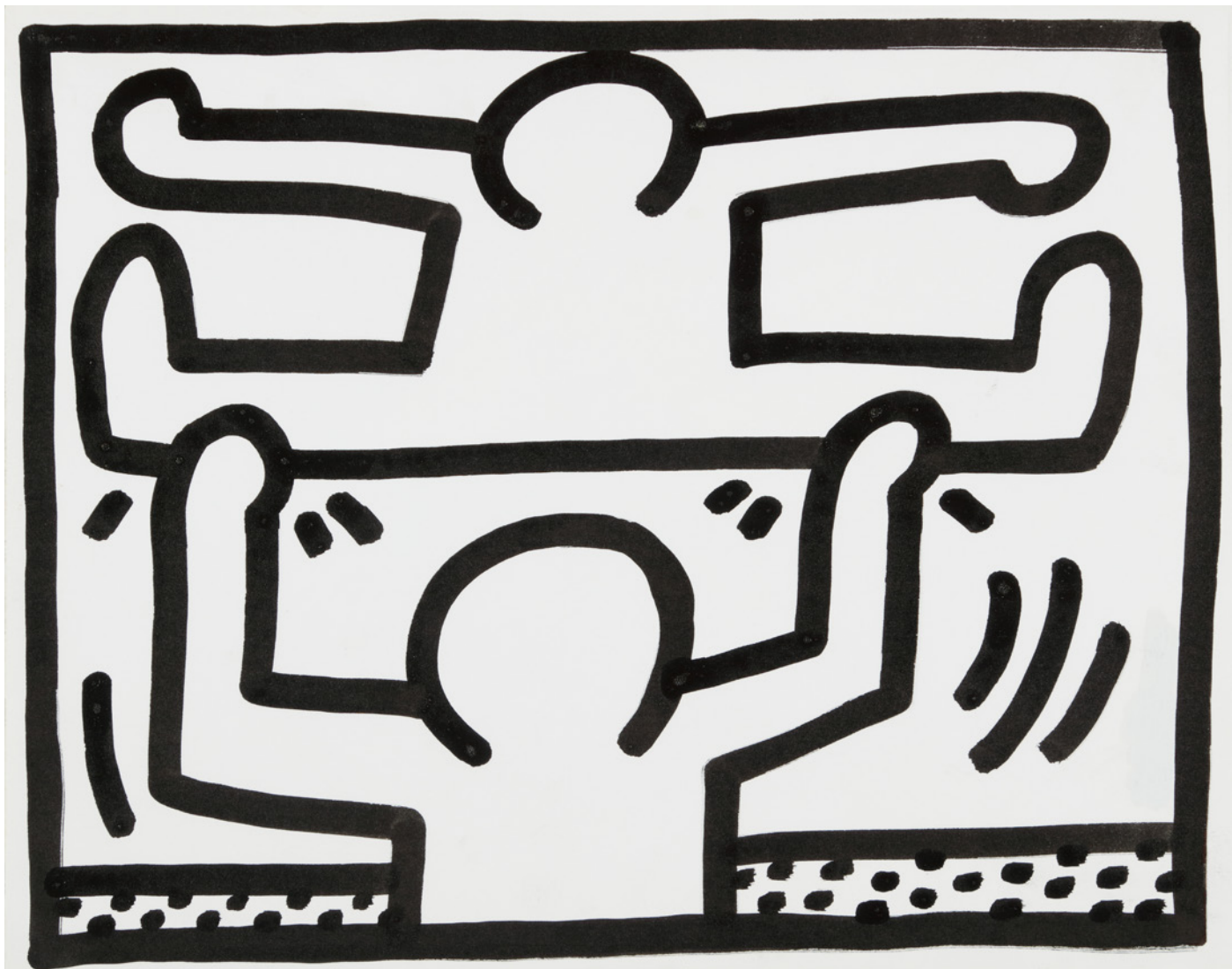
**Alexander Calder**

*Untitled, 1974*

Gouache on paper

109.8 x 37.7 cm | 43.2 x 14.8 in

[Enquire](#)



**Keith Haring**

*Untitled (Pop Shop Drawings), 1985*

Ink on paper

27.9 x 35.6 cm | 11 x 14 in

[Enquire](#)



**Keith Haring**

*Untitled (Pop Shop Drawings), 1985*

Ink on paper

27.9 x 35.6 cm | 11 x 14 in

[Enquire](#)





**Georg Baselitz**  
*Clyfford Still*, 2018

Oil on canvas  
165 x 100 cm | 65 x 39.4 in

[Enquire](#)

# Georg Baselitz

## *Clyfford Still, 2018*

Executed in 2018, the present work exemplifies Georg Baselitz's expansion of figurative and abstract painting. This work hails from a recent series of paintings that Baselitz began in the spring of 2018 that pay respect to the artists he most admires, among them Clyfford Still, Jackson Pollock, Mark Rothko, Joan Mitchell, Alexander Calder, Roy Lichtenstein and Andy Warhol. The gestural swathes of pigment on the thickly worked surface of *Clyfford Still* exemplify Baselitz's late style of mark-making and his increasing tendency to look towards art historical precedents. Thus this painting signifies Baselitz's genuine enchantment with the history of art, as one master of the post-war era depicts another.





**Georg Baselitz**

*Das 70iger Modell singt wieder, 2011*

Watercolor on paper  
65.8 x 49.8 cm | 25.9 x 19.6 in

[Enquire](#)



**A.R. Penck**

*Untitled (TX)*, circa 1987-1990

Acrylic on canvas

100 x 140 cm | 39.4 x 55.1 in

[Enquire](#)





**Karel Appel**  
*Untitled*, 1955

Oil on canvas  
100 x 72 cm | 39.4 x 28.3 in

[Enquire](#)



**Jean-Michel Atlan**

*Composition*, 1959

Oil on canvas

54 x 81 cm | 21.3 x 31.9 in

**Enquire**



**Serge Poliakoff**

*Composition abstraite*, 1958

Oil on panel

60 x 73 cm | 23.6 x 28.7 in

[Enquire](#)



**Manolo Valdés**

*Cabeza con Tres Mariposas*, 2018

Bronze with Black Patina

64 x 56 x 53 cm | 25.2 x 22 x 20.9 in

[Enquire](#)

# OPERA GALLERY

## **Opera Gallery Geneva**

Place de Longemalle 10-12

1204 Geneva

+41 (0)22 318 57 70

geneve@operagallery.com

Mon - Sat: 10 am - 7 pm

## **BRAFA Art Fair Practical Information**

Brussels Expo I Heysel, Palais 3 & 4 (entrée)

Place de Belgique 1, 1020 Bruxelles, Belgique

19-22 & 24-26 June 2022: 11 am - 7 pm

23 June 2022: 11 am - 10 pm