

30 YEARS 30 ARTISTS



OPERA GALLERY



FOREWORD

As we celebrate Opera Gallery's 30TH anniversary, we take this moment to reflect on the journey that began in 1994 with the opening of our first spaces in Singapore and Paris. From the start, our goal was simple: to create a place where established and emerging artists could share the same space, providing a platform for diverse forms of artistic expression. What began as a vision has grown into a global presence, and today, we remain committed to this founding principle. In 2009, we opened our Geneva gallery, adding a significant location to the Opera Gallery family and further expanding our ability to connect with an international audience.

The '30 Years – 30 Artists' exhibition is a reflection of that commitment. By bringing together works from 30 modern, post-war, and contemporary artists, we are not only marking this important anniversary but also highlighting the variety and richness of the artists who have contributed to Opera Gallery's success. This exhibition features pieces by major figures like Marc Chagall, Pablo Picasso, Jean Dubuffet, and Andy Warhol, alongside contemporary artists such as Andy Denzler, Jean-Charles Blais, and Manolo Valdés. It is a selection that speaks to the wide range of talent we have had the privilege to showcase over the years.

Throughout these three decades, our mission has remained clear: to support creativity and artistic expression from all corners of the globe. Whether through painting, sculpture, installation, or new media, Opera Gallery has always aimed to provide a platform for diverse voices, encouraging innovation while also celebrating the contributions of artists who have shaped the art world over time.

'30 Years – 30 Artists' offers a chance to look back at the incredible variety of artists we have worked with and to look forward to what lies ahead. It is a celebration of the gallery's ongoing role in the global art scene and a reminder of how much art connects us all — across disciplines, generations, and cultures.

We would like to express our gratitude to the artists, collectors, and art lovers who have been part of this journey. Your support has been invaluable, and we look forward to continuing to work together to promote and celebrate creative talent in the years to come.

Gilles DYAN
Founder & Chairman
Opera Gallery Group

Jordan LAHMI
Director
Opera Gallery Geneva



Pablo PICASSO (1881–1973)

Buste de femme

1960

Oil on canvas

Signed 'Picasso' on the upper left; dated and numbered '10.3.60. / II' on the reverse

81 × 64.9 cm | 31.9 × 25.6 in



Marc CHAGALL (1887–1985)

The Lover with the Red Profile and the Blue Donkey

1971

Oil and coloured inks on canvas

Signature stamp of the estate 'Marc/Chagall' on the lower right

38.2 × 45.8 cm | 15 × 18 in



Fernand LÉGER (1881–1955)

Study for Builders

Circa 1950

Gouache, coloured crayon, brush and ink and pencil on paper

Signed with the initials 'F.L.' on the lower right

54.5 × 71.5 cm | 21.5 × 28.1 in



Alexander CALDER (1898–1976)

Red Octopus

1971

Gouache on paper

Signed and dated 'calder 71' on the lower right

75 × 109 cm | 29.5 × 42.9 in



Jean DUBUFFET (1901–1985)

L'âge a écrit sur leurs visages

1954

Oil on canvas

Signed and dated 'J. Dubuffet / 54' on the upper left

91 × 72 cm | 35.8 × 28.3 in



ZAO Wou-ki (1920–2013)

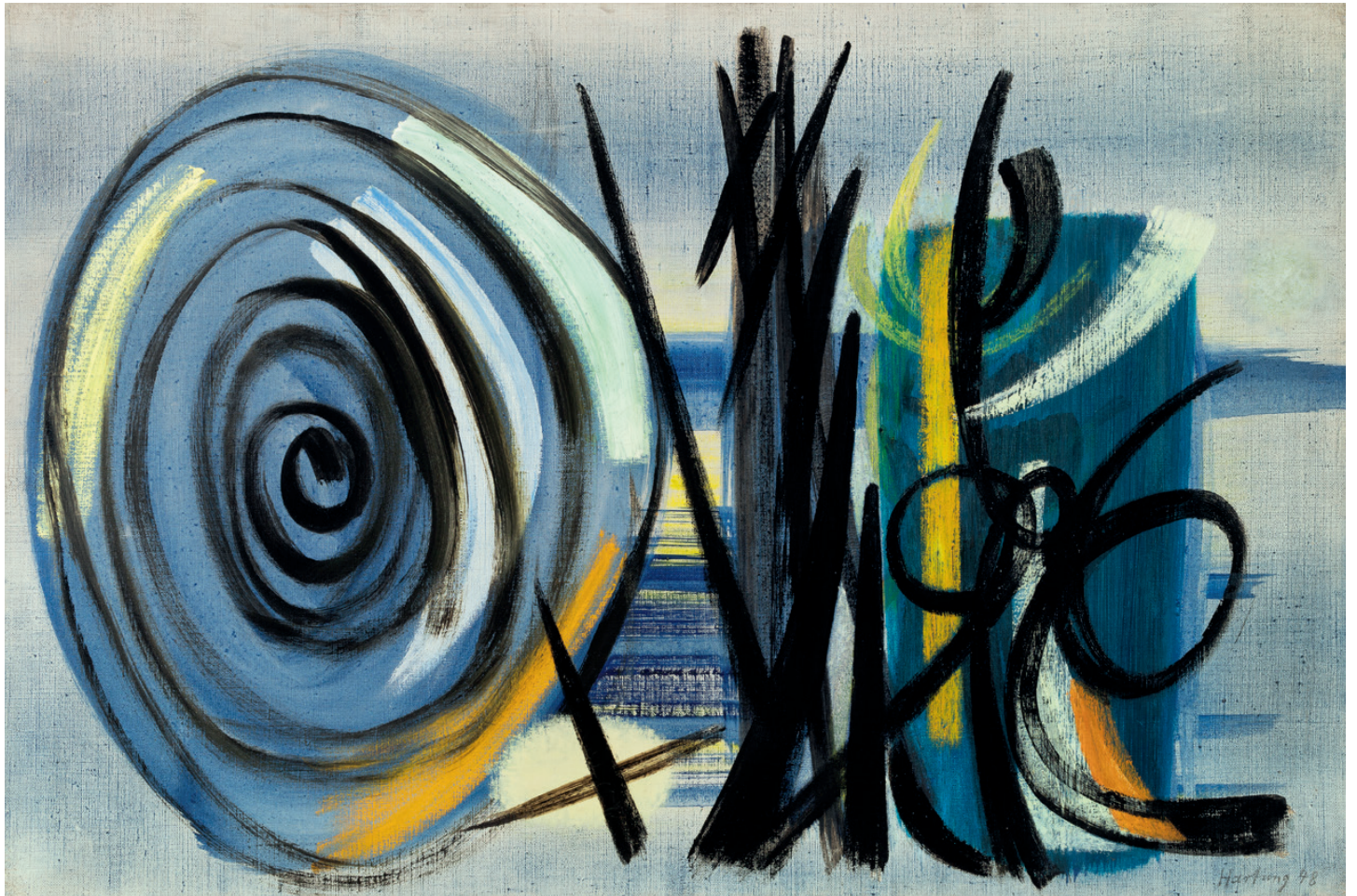
18.12.69

1969

Oil on canvas

Signed 'ZAO' and signed in Chinese on the lower right; signed again,
titled and dated 'ZAO WOU-KI / 18.12.69' on the reverse

116 × 89 cm | 45.7 × 35 in



Hans HARTUNG (1904–1989)

T1948-41

1948

Oil on canvas

Signed and dated 'Hartung 48' on the lower right; signed again
and titled 'H. HARTUNG T48-41' on the reverse

54 × 79.8 cm | 21.3 × 31.4 in



Pierre SOULAGES (1919–2022)

Peinture 181 × 128 cm

30 mars 2008

Acrylic on canvas

Signed, titled and dated 'SOULAGES/'Peinture 181 × 128 cm/ 30 MARS 2008' on the reverse

181 × 128 cm | 71.3 × 50.4 in



Jean Paul RIOPELLE (1923–2002)

St. Paul

1966

Oil on canvas

Signed and dated 'riopelle/66' on the lower right; signed,
titled and dated 'Riopelle 66 St Paul' on the reverse

97 × 146 cm | 38.2 × 57.5 in



Serge POLIAKOFF (1900–1969)

Composition abstraite

1958

Oil on panel

Signed 'SERGE POLIAKOFF' on the lower right

60 × 73 cm | 23.6 × 28.7 in



Karel APPEL (1921–2006)

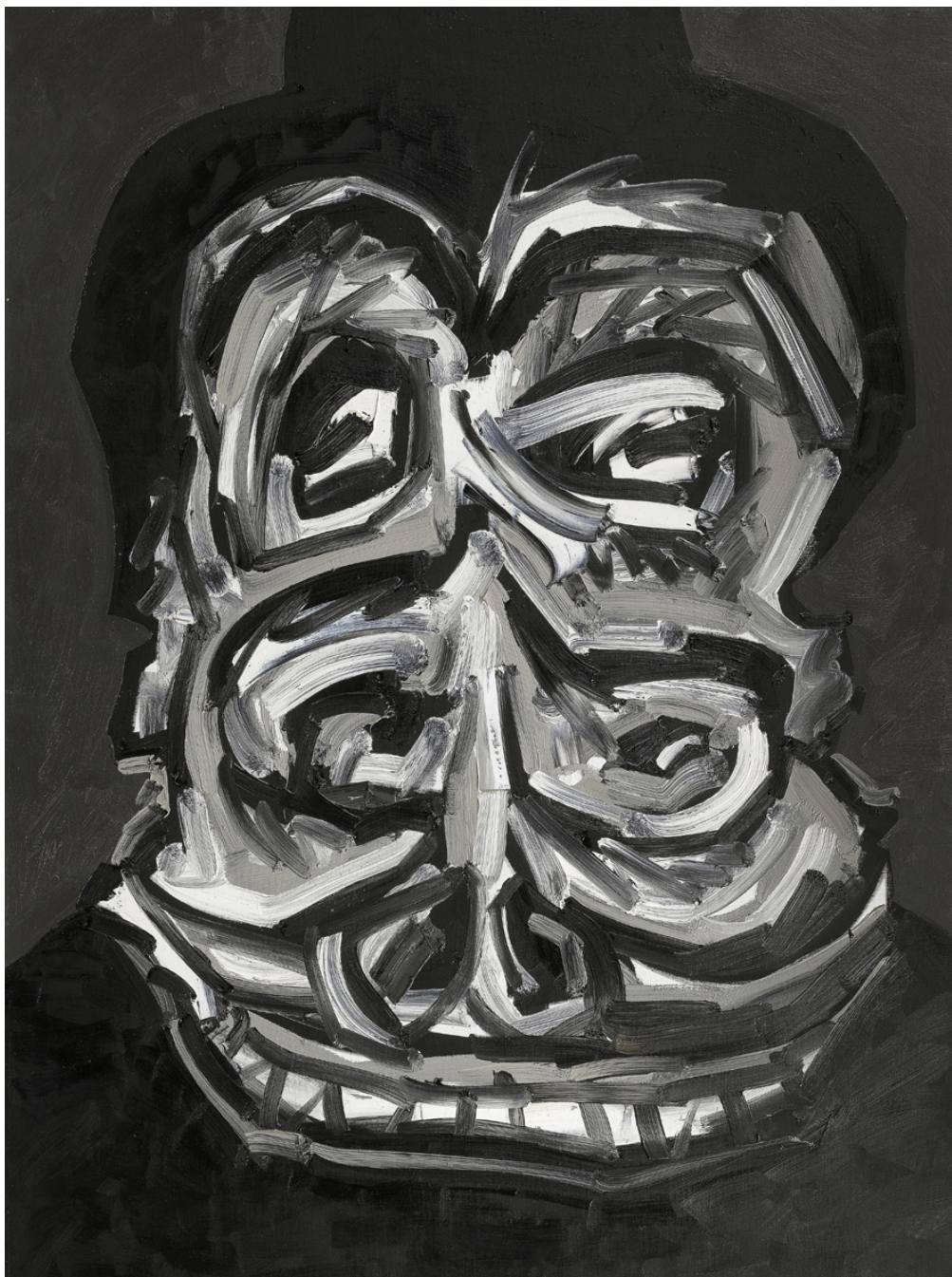
Head on the Sea

1958

Oil on canvas

Signed and dated 'appel 58' on the lower left; signed, titled
and dated "Tête sur la mer" appel 1958' on the stretcher

130 × 162 cm | 51.2 × 63.8 in



Antonio SAURA (1930–1998)

Don 2

1989

Oil on canvas

Signed on the reverse

130 × 96.9 cm | 51.2 × 38.1 in



Hermann NITSCH (1938–2022)

HF_05_20

2020

Acrylic on canvas

Titled 'HF_05_20' on the stretcher; signed and dated '2020' on the reverse

200 × 150 cm | 78.7 × 59.1 in



A.R. PENCK (1939–2017)

Untitled

Circa 1990

Acrylic on canvas

Signed 'ar.penck' on the lower left

100 × 200 cm | 39.4 × 78.7 in



Niki de SAINT PHALLE (1930–1985)
Hommage à Jean Tinguely
 1988

Resin, paint, bulbs, and wire
 Unique piece
 'R.HALIGON' stamp on the lower left
 157 × 82 × 55 cm | 61.8 × 32.3 × 21.7 in



Yayoi KUSAMA (b. 1929)

I Carry On Living with the Pumpkins

2014

Urethane paint on fiber reinforced plastics

Unique piece

Signed and dated 'Yayoi / Kusama / 2014'

180 × 180 × 30 cm | 70.9 × 70.9 × 11.8 in



Andy WARHOL (1928–1987)

Marilyn Reversal

1979

Acrylic and silkscreen ink on canvas

Signed and dated with the Estate's stamp 'Andy Warhol/© 1979' on the reverse;

dedicated 'to Paul' on the overlap

45.5 × 38 cm | 17.9 × 15 in



Jean-Michel BASQUIAT (1960–1998)

Cash Crop

1984

Oil and acrylic on canvas

Signed, titled and dated 'Jean-Michel Basquiat Cash Crop 1984' on the reverse

182.9 × 243.8 cm | 72 × 96 in



Roy LICHTENSTEIN (1923–1987)

Apple, Grapes, Grapefruit

1974

Acrylic, oil, and graphite pencil on canvas

Signed and dated 'rf Lichtenstein / '74" on the reverse

101.9 × 137.2 cm | 40.1 × 54 in



Fernando BOTERO (1932–2023)

Uccello

2006

Bronze with brown patina

Ed: AP 1/2

Signed 'Botero' and numbered 'EA 1/2' on the base, Da Prato foundry stamp

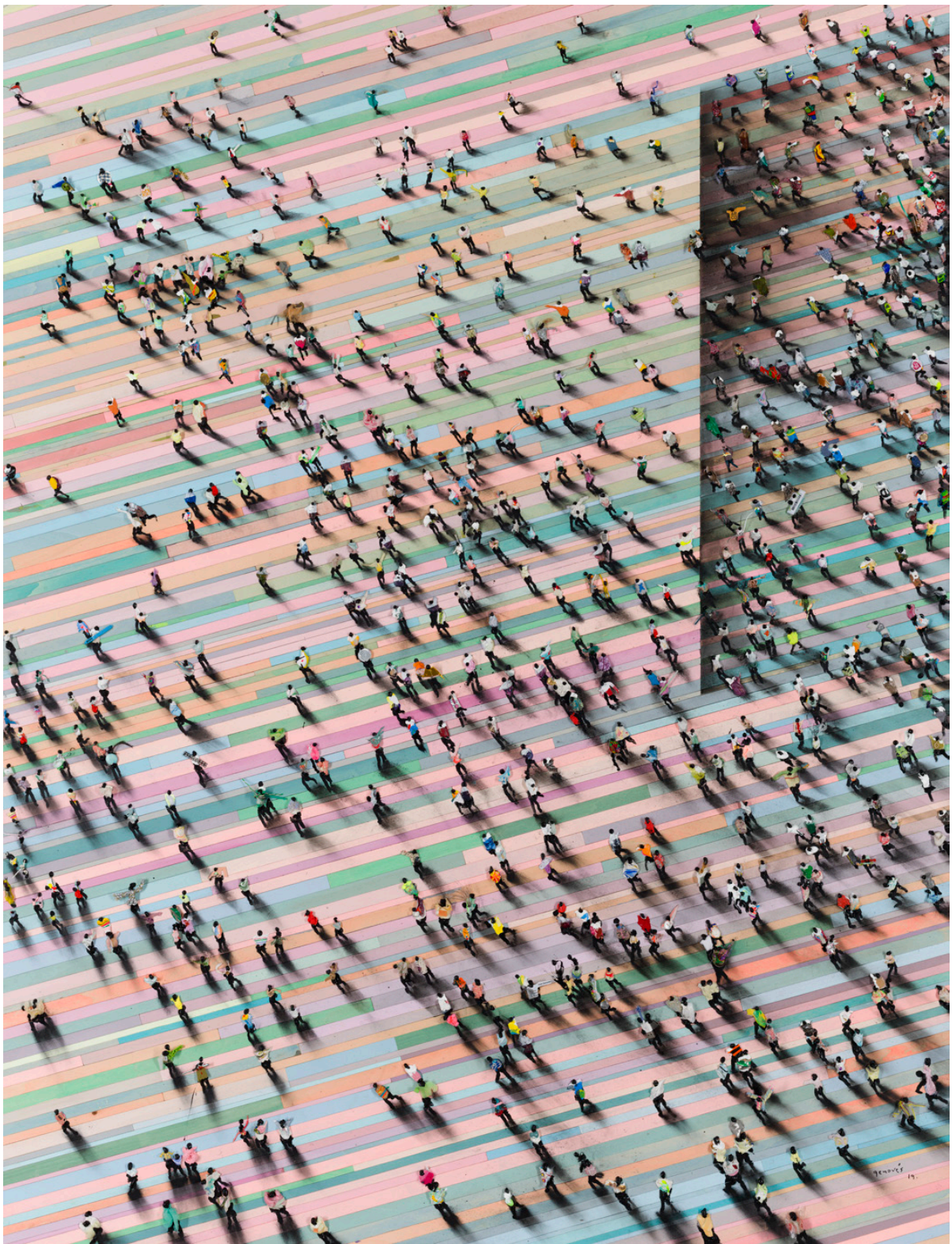
36 × 36 × 24 cm | 14.2 × 14.2 × 9.4 in



Manolo VALDÉS (b.1942)
Desnudo sobre fonda rosa

2011

Oil, thread and burlap collage on linen
Signed and titled 'Valdez Desnudo sobre fonda rosa' on the reverse
170.5 × 230 cm | 67.1 × 90.6 in



Juan GENOVÉS (1930–2020)

Canal

2019

Acrylic on board

Signed and dated 'genovés / 19' on the lower right

210 × 160 cm | 82.7 × 63 in



Bernar VENET (b. 1941)

Two arcs of 211.5°

1983

Rolled steel with black patina

Unique piece

Stamped with the title '211.5°' twice

117.2 × 104.1 × 25 cm | 46.1 × 41 × 9.8 in



Ron ARAD (b. 1951)
Big Easy (crystalline) Aquamarine
2023

Crystalline resin
Edition: 5/5
92 × 132 × 80 cm | 36.2 × 52 × 31.5 in



Julian OPIE (b.1958)

Big Bag.

2018

Inlaid and overlaid acrylic panel

220 × 111 × 4.5 cm | 86.6 × 43.7 × 1.8 in



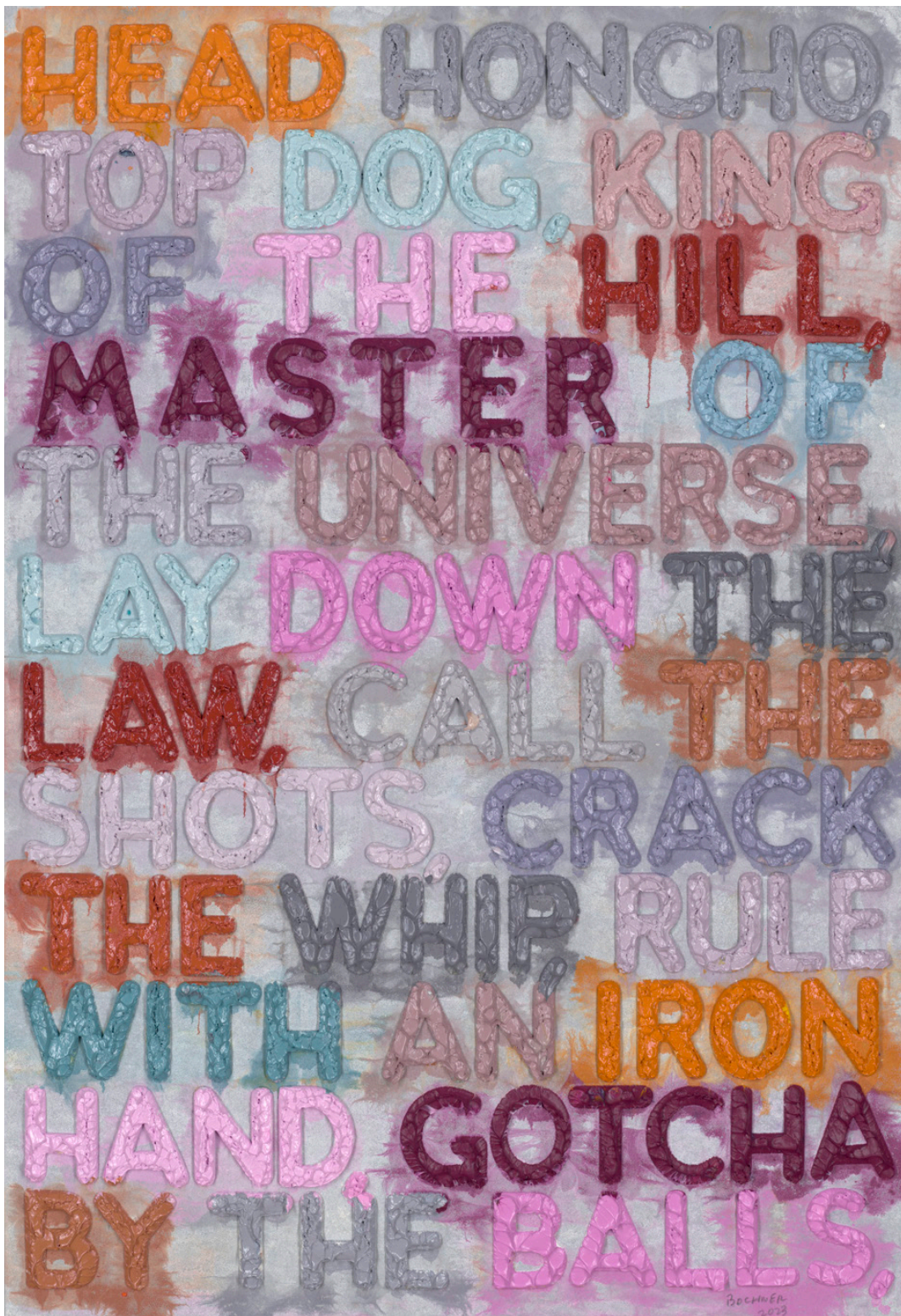
Anselm REYLE (b. 1970)

Untitled

2024

Mixed media, acrylic glass

143 × 123 × 26 cm | 56.3 × 48.4 × 10.2 in



Mel BOCHNER (1940)

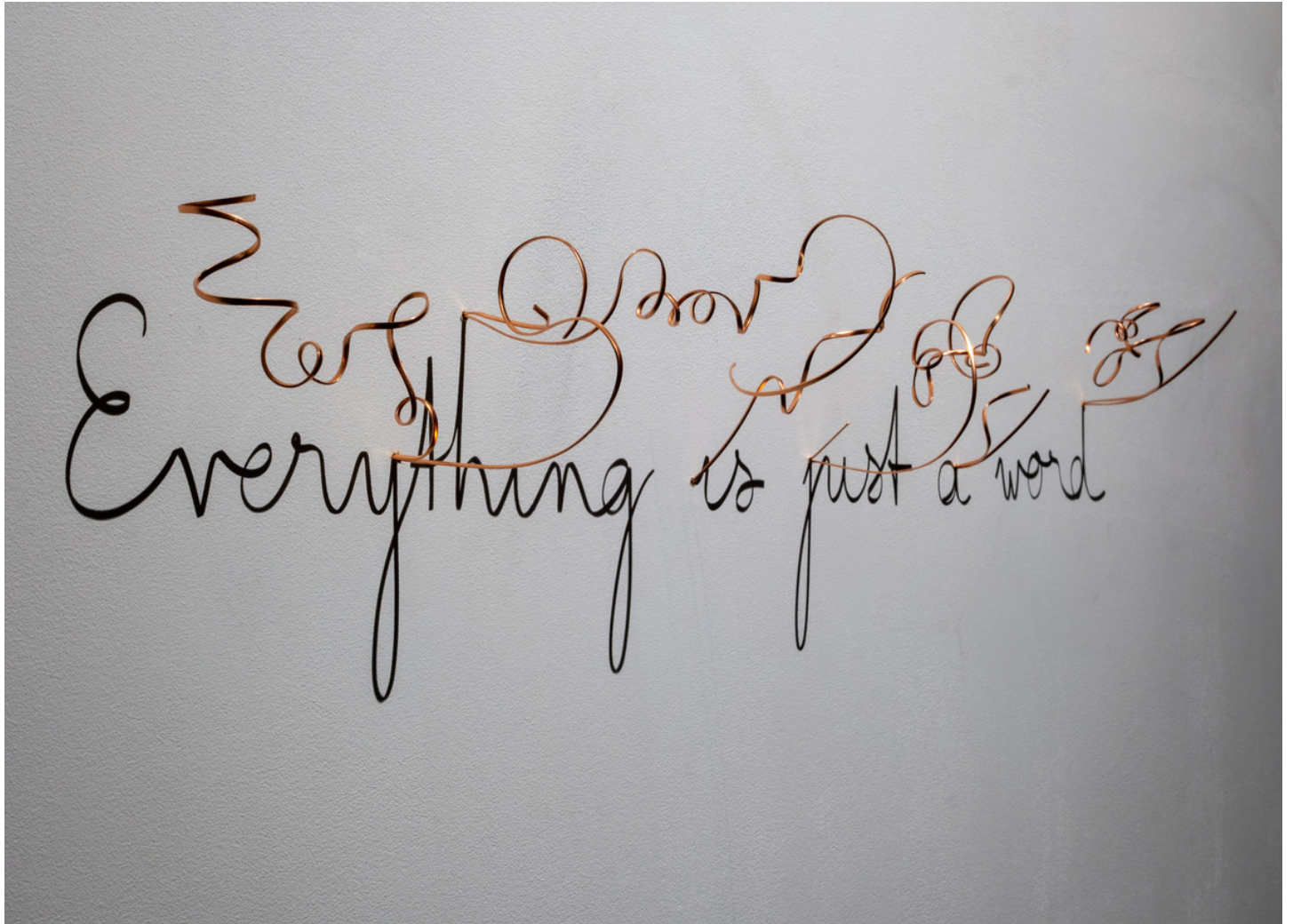
Head Honcho

2023

Monoprint in oil with collage, engraving and embossment on handmade paper

Signed and dated 'BOCHNER / 2023' on the lower right

75.6 × 52.1 cm | 29.8 × 20.5 in



Fred EERDEKENS (b.1951)

Everything is just a word

2024

Copper

15 × 80 × 15 cm | 5.9 × 31.5 × 5.9 in



Andy DENZLER (b. 1965)
Looking at the Front Yard
2024

Oil on canvas
80 × 70 cm | 31.5 × 27.6 in



Jean Charles BLAIS (b.1956)

Ensemble

2022

Oil, charcoal and gouache on torn posters

150 x 122 cm | 59.1 x 48 in

This catalogue was created for the exhibition
'30 Years – 30 Artists'
Presented by Opera Gallery Geneva,
15 November – 13 December 2024

COORDINATION

Louise Bassou

AUTHOR

Jordan Lahmi

RESEARCH

Marielle Blanc
Anaïs Chombar
Natasha Selce

PROOFREADING

Louise Bassou
Marielle Blanc
Anaïs Chombar
Natasha Selce

GRAPHIC DESIGN

Marine Duroselle

COVER

Yayoi Kusama, *I Carry On Living with the Pumpkins*, 2014

All rights reserved. Except for the purpose of review,
no part of this ebook should be reproduced, stored in
a retrieval system, or transmitted, in any form or by any means,
electronic, mechanical, photocopying, recording or otherwise,
without the prior permission of the publishers.

OPERA GALLERY

Place de Longemalle 10-12 & 19, 1204 Geneva
T +41 (0)22 318 57 70
geneve@operagallery.com
operagallery.com