

Abstraction, A Visual Reality

OPERA GALLERY

Abstraction, A Visual Reality

9 - 31 MARCH, 2022

OPERA GALLERY

FOREWORD

Abstraction, A Visual Reality places in conversation a wealth of approaches towards abstraction. From such dialogues arises a diversity of methodologies and aspirations, yet somehow, through this multiplicity, one can also perceive, running through the works, shared influences.

The artworks presented in *Abstraction, A Visual Reality* span from 1954 to 2021, a wide breadth of time during which abstraction has known many twists and turns, some of which are illustrated here.

Indeed, we see the surrealist revolution in the paintings of Alexander Calder and Joan Miró, the lyrical abstraction of painters such as Georges Mathieu, Chu Teh-Chun and Hans Hartung, the groundbreaking inclusion of space and volume in the specialist creations of Enrico Castellani, Lucio Fontana and Turi Simeti, as well as the infiltration of the performative gesture of painting, such as in the Abstract Expressionist canvases of Sam Francis, the Viennese actionist compositions of Hermann Nitsch, and the Gutai works of Kazuo Shiraga, to name but a few of the presented abstractions.

However, the survey spans a wider timeframe still: it stretches back centuries. In the contemporary compositions of Feng Xiao-Min, one can see the influence of impressionist sceneries. In the works of Georges Mathieu, the tradition of Japanese calligraphy, and in Chu Teh-Chun, of ancient Chinese calligraphy.

In *Abstraction, A Visual Reality* amidst the plurality of movements and philosophies, one can decipher early researches, experimentations and revolts, and see the presence of ancestors of abstractions, trailblazers that have laid the paths for the artists on show to develop their own language.

Gilles Dyan

Founder & Chairman
Opera Gallery Group

Sylvain Gaillard

Gallery Director
Opera Gallery Dubai

Joan Miró

1893 - 1983

Paysage 1975

Signed on the lower right, titled and dated on the reverse
India ink, wax crayon and pastel crayon on
creased paper (back of an architect plan)
46.5 x 92.5 cm | 18.25 x 36.3 in

PROVENANCE
Galerie Lelong, Paris, France
Galerie Pascal Retelet, Saint-Paul-de-Vence, France
Private collection
Finarte, Milan, 22 march 2005, lot 264
Finarte, Milan, 4 october 2006, lot 480
Private collection

EXHIBITED
New York, Galerie Lelong, *Joan Miró*, December 1993 - January 1994
Seoul, Juliana Gallery, *Joan Miró, peintures, gouaches, sculptures, lithographies, gravures*, May - June 1994
Philadelphia, Locks Gallery, *Joan Miró*, Octobre - Novembre 1996
Bologne, Galleria Marescalchi, *Joan Miró: vedi alla voce sogno*, 1997, p. 12 and 15, ill. p. 189
Rodengo-Saiano, Abbazia Olivetana di Rodengo-Saiano et Milan, Giò Marconi, *Joan Miró Scultore*, June - October 1997, p. 55, no. 38, ill. in colour, titled « Paysage 1670, 1975 »
Arezzo, Museo Civico d'Arte Moderna e Contemporanea, *Da Picasso a Botero: capolavori dell'Arte del Novecento da una collezione privata*, March - June 2004, p. 396, ill. in colour p. 231; titled *Paysage 1670, 1975*
Milan, Galleria Il Castello, *Miró: Quando il cielo fa*, March - April 2006, p. 42, ill. in colour p. 43, titled *Paysage 1670*

LITERATURE
Jacques Dupin et Ariane Lelong-Mainaud, *Joan Miró, Catalogue raisonné, Drawings*, vol. IV: 1973-1976, Paris, 2013, p. 183, no. 2752 , ill. in colour

CERTIFICATE
The ADOM (Association pour la défense de l'oeuvre de Joan Miró) has confirmed the authenticity of this work (with incorrect date)



Antoni Tàpies

1923 - 2012

Grafisme sobre ocre

1988

Signed on the lower left
Oilstick and spray paint on paper
37 x 50 cm | 14.6 x 19.7 in

PROVENANCE

Mayoral Galeria d'Art, Barcelona, Spain
Collection particulière, Paris, France
Private collection, Spain

LITERATURE

Anna Agustí, *Tàpies, Obra Completa*, 1986 - 1990, Vol. VI, Poligrafia, Madrid, 2001

CERTIFICATE

This artwork is certified by Miquel Tapies, President of the Tapies Foundation, and is registered under the no. T9391



Hans Hartung

1904 - 1989

P40-1984-H3

1984

numbered and dated on the reverse
Acrylic on baryted cardboard
90 x 120 cm | 35.4 x 47.2 in

PROVENANCE

Galerie Sapon, Nice, France
Private collection

EXHIBITED

Hans Hartung opere dal 1970 al 1985, Giampiero Biasutti, Turin, 2001
Hartung, Arte 92, Milan, Italy, 2002

LITERATURE

Bellini Rolando, *Hans Hartung opere dal 1970 al 1985*, Giampiero Biasutti, Turin, Italy, 2001, pp. 56-57
Cerritelli Claudio, *Hartung*, Arte 92, Milan, 2002

CERTIFICATE

The Fondation Hartung Bergman has confirmed the authenticity of this work



Hans Hartung

1904 - 1989

T1989-L16

1989

Oil on canvas
180 x 142 cm | 70.9 x 55.9 in

PROVENANCE

Galerie Marwan Hoss, Paris, France
Private Collection (Ernst Beyeler), Switzerland
Christie's, London, 22 June 2011, lot 332
Galerie Brimaud, Paris, France
Private Collection, Paris, France

EXHIBITED

Hans Hartung: les oeuvres ultimes, Galerie Marwan Hoss (FIAC), Paris, 25 October - 1 November 1990 (repro. in catalogue)

LITERATURE

Hans Hartung, *Les œuvres ultimes*, L'Autre (Cahiers Semestriels n° 1), Paris, Galerie Marwan Hoss, 1990, p. 51 (ill.)

CERTIFICATE

Certificate issued on the 12th September 2011 and registered under number CT 394-0



Hans Hartung

1904 - 1989

T1988 R35

1988

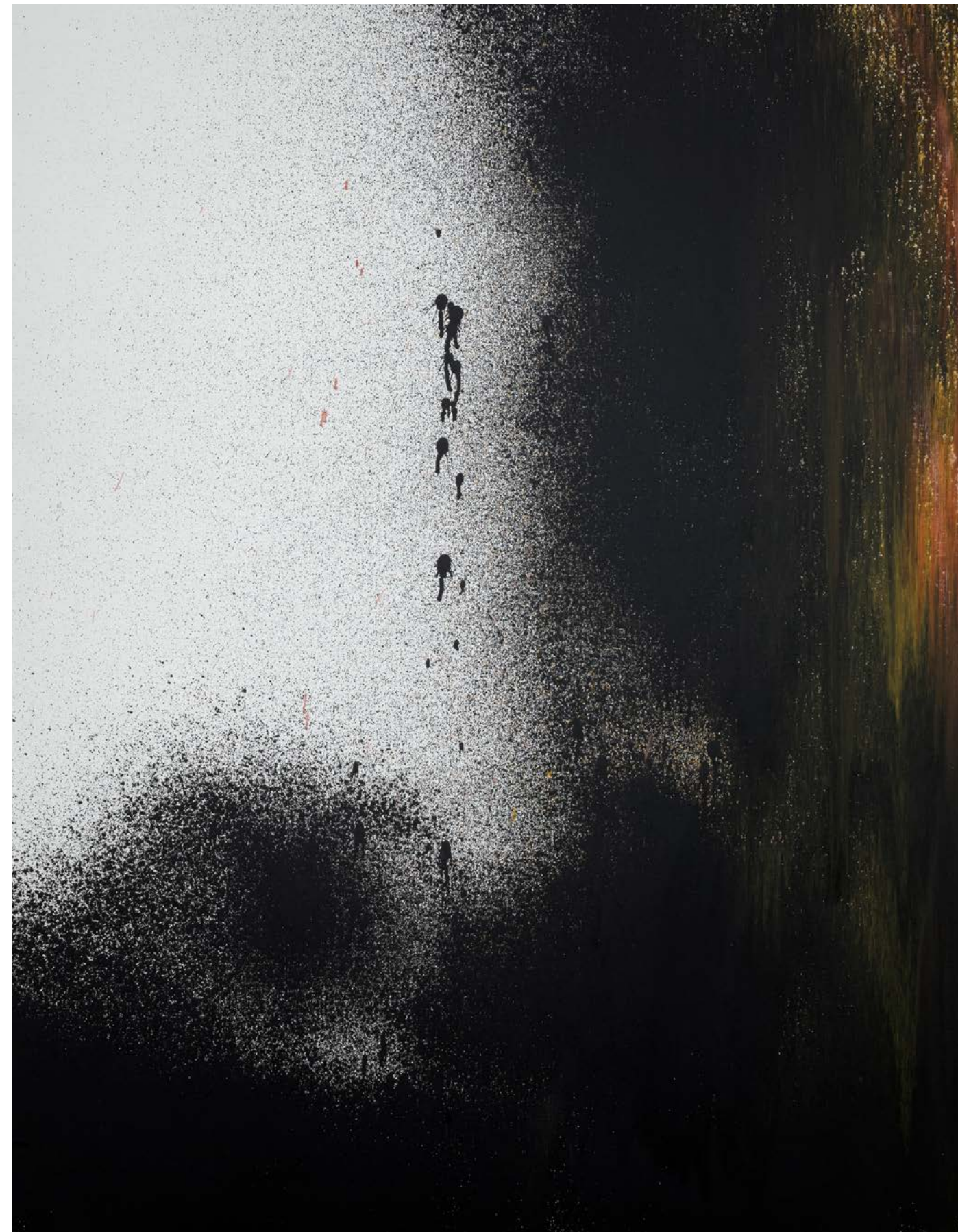
Acrylic on canvas
146 x 114 cm | 57.5 x 44.9 in

PROVENANCE
Private collection

EXHIBITED
Hans Hartung "SPRAY", MRAC, Sérignan, France, 2010

LITERATURE
Audiffren Hélène, Rondeau Corinne, *Hans Hartung Spray*, Silvana Editoriale, Milan, 2010
Diedrich Stephan, Hughes Gordon, Pontégnie Anne, Anfam David, Hans Hartung, Simon Lee / Nahmad Contemporary / Perrotin, New York, 2018

CERTIFICATE
Certificate issued on the 21st November 2017 and registered under number CT 394-0



Georges Mathieu

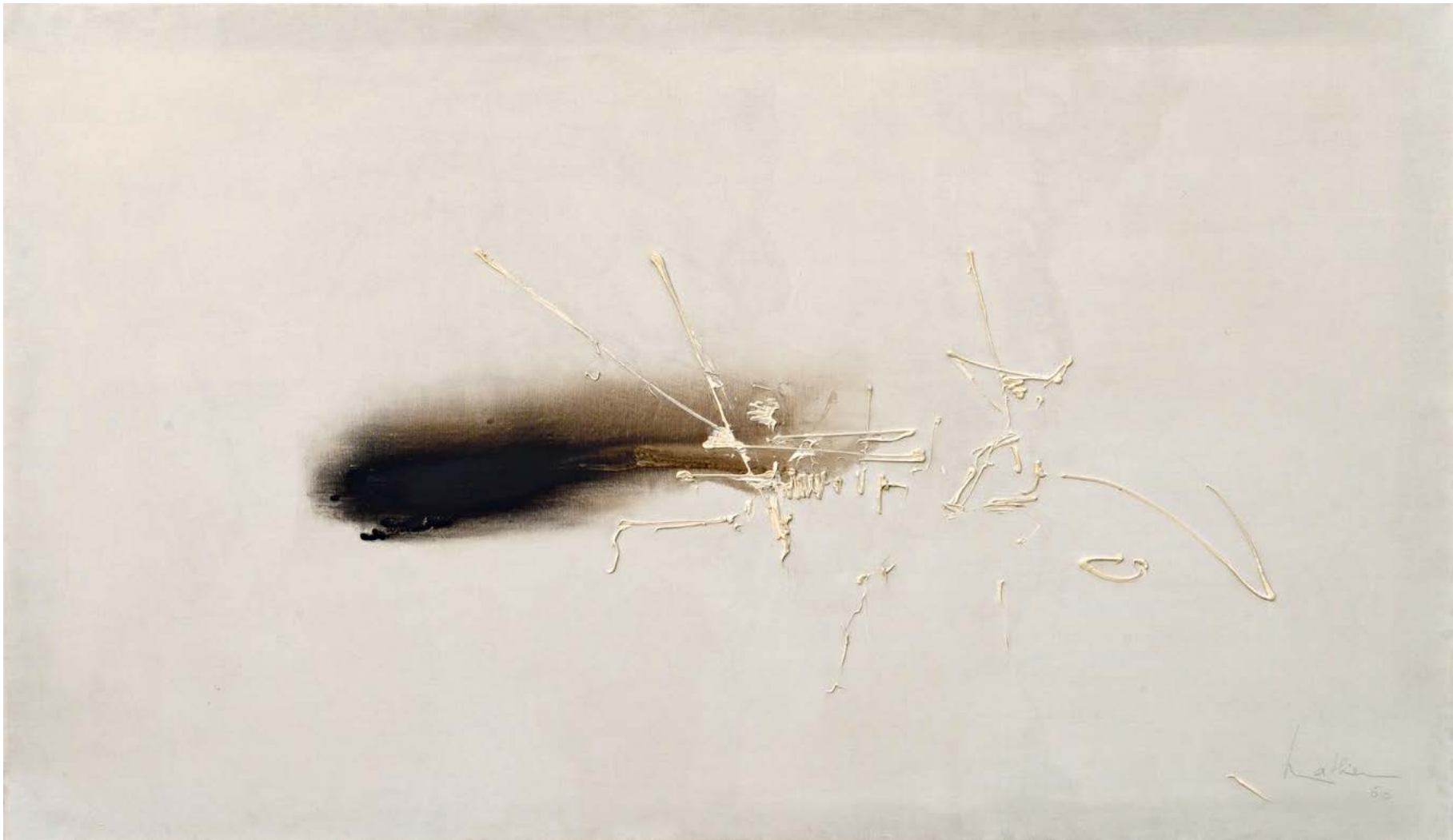
1921 - 2012

Le Fort Gaston tombe en la puissance du Roy d'Arménie

Signed and dated on the lower right, titled on the stretcher
Oil on canvas
114.5 x 185 cm | 45.1 x 72.8 in

PROVENANCE
Collection Solange de Turenne
Galerie Berès, Paris, France

CERTIFICATE
The artist has confirmed the authenticity of this work



Georges Mathieu

1921 - 2012

Nantouillet II

1986

Signed and dated on the lower left, titled on the stretcher
Oil on canvas
60 x 180 cm | 23.6 x 70.9 in



PROVENANCE

Galerie Mazzoleni Art, London, United Kingdom
Boetta, Genoa, October 25, 2004, lot 355

EXHIBITED

Turin, Galleria d'Arte Narciso, *Mathieu*, 23 January - 27 February 1988, n°12

CERTIFICATE

Marc Ottavi, vice president of the Association "Archives Jean-Marie Cusinberche sur Georges Mathieu", has confirmed the authenticity of this work

Hermann Nitsch

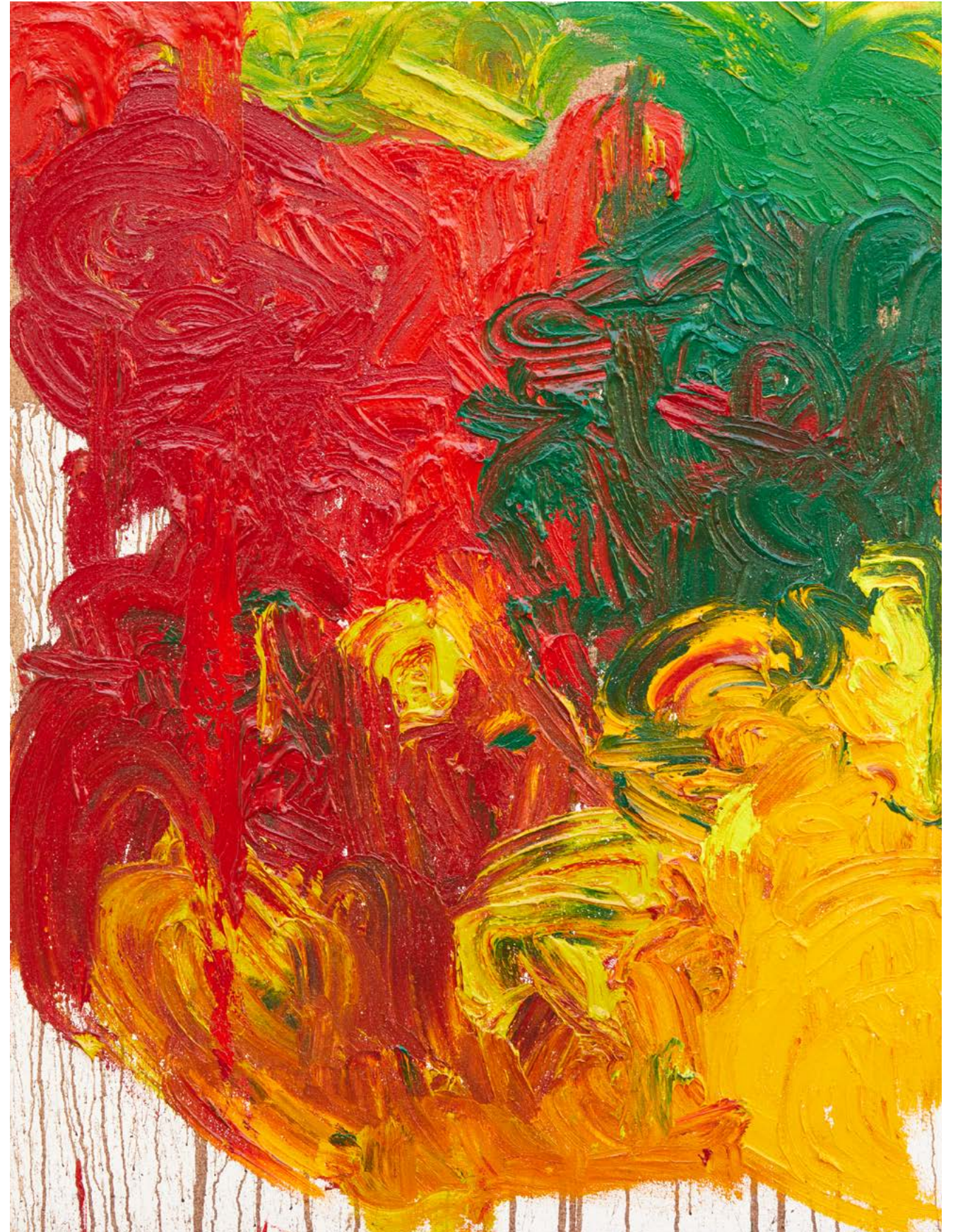
b. 1938

HF_07_19

2019

Acrylic on canvas
200 x 150 cm | 78.7 x 59.1 in

PROVENANCE
Artist's studio



Hermann Nitsch

b. 1938

01b_14

2014

Acrylic on canvas
200 x 300 cm | 78.7 x 118.1 in

PROVENANCE

Artist's studio



Hermann Nitsch

b. 1938

24_20

2020

Acrylic on canvas
200 x 300 cm | 78.7 x 118.1 in

PROVENANCE
Artist's studio



Hermann Nitsch

b. 1938

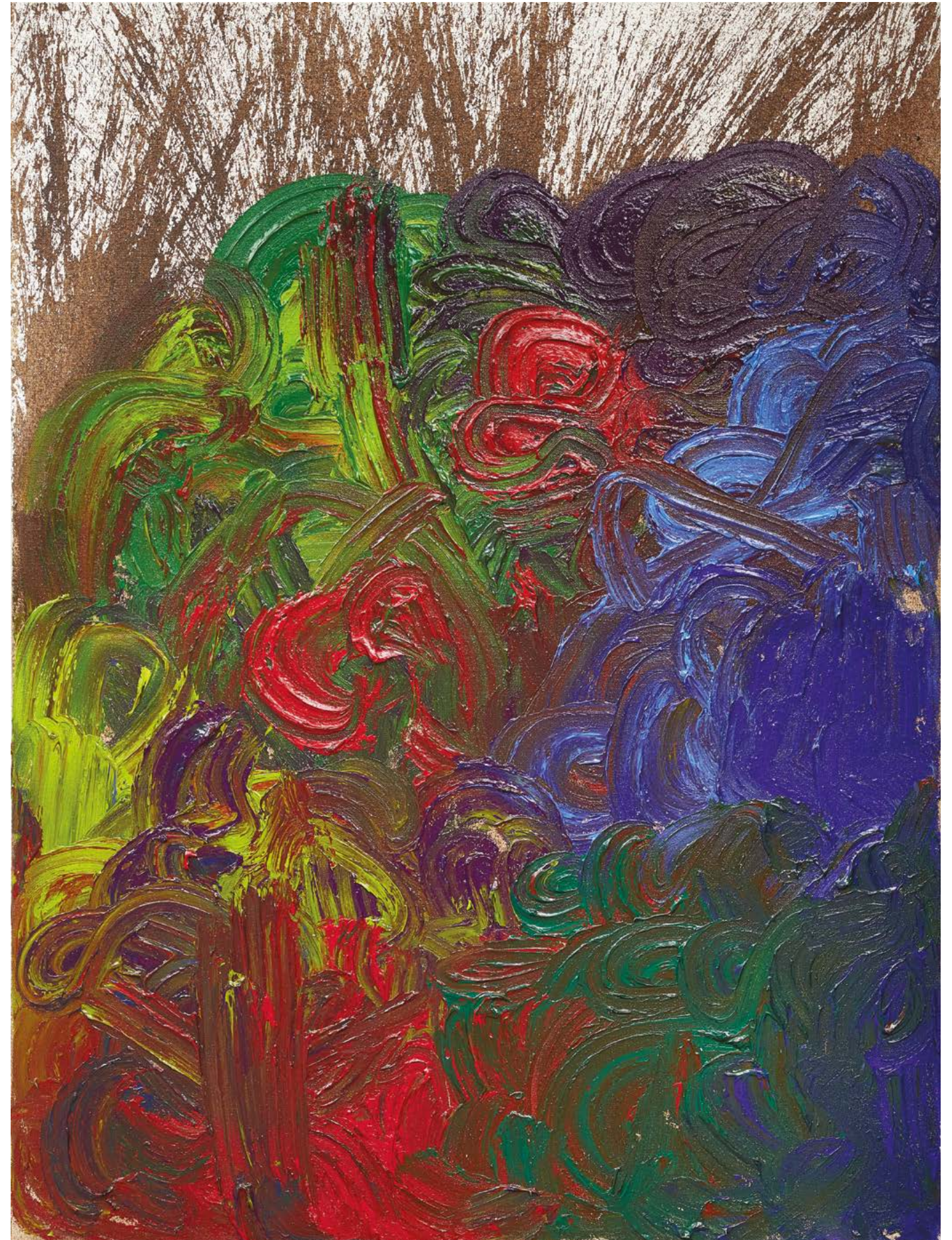
HF_36_20

2020

Acrylic on canvas
200 x 150 cm | 78.7 x 59.1 in

PROVENANCE

Artist's studio



Hermann Nitsch

b. 1938

BFI_16_21

2021

Acrylic on canvas
200 x 300 cm | 78.7 x 118.1 in

PROVENANCE

Artist's studio



Pierre Soulages

b. 1919

Peinture 81 x 130 cm, 5 janvier 2008

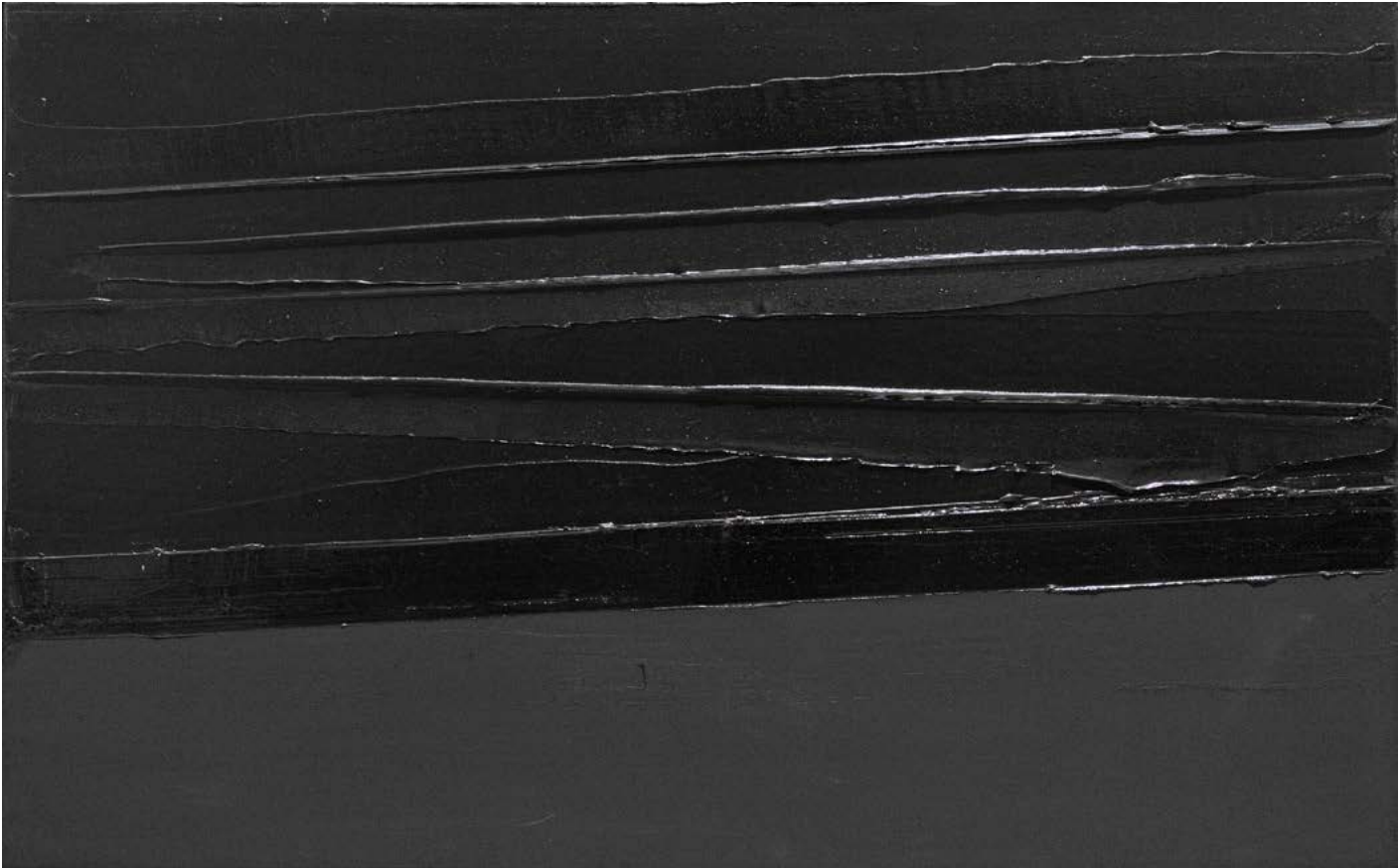
Signed, titled and dated on the reverse
Oil on canvas
81 x 130 cm | 31.9 x 51.2 in

PROVENANCE
Bernard Jacobson Gallery, London, United Kingdom
Opera Gallery, Hong Kong, China
Private Collection, Geneva, Switzerland

EXHIBITED
Pierre Soulages: new paintings, Bernard Jacobson Gallery, London, 24 June -
1 September 2010

LITERATURE
P. Encrevé, Soulages, *L'œuvre complet Peintures IV*. 1997-2013, Paris, Gallimard,
2015, p. 250, no. 1383 (ill.)

CERTIFICATE
A certificate of authenticity from the artist accompanies this artwork



Pierre Soulages

b. 1919

Peinture 102 x 130 cm, 11 mars 2016

Signed, titled and dated on the reverse
Oil on canvas
102 x 130 cm | 40.2 x 51.2 in

PROVENANCE

Artist's studio
Private collection, Switzerland

CERTIFICATE

A certificate of authenticity from the artist accompanies this artwork



Lucio Fontana

1899 - 1968

Concetto Spaziale (Teatrino)

1965

Signed and titled on the reverse

Waterpaint on canvas and lacquered wood frame

110.5 x 110.5 cm | 43.5 x 43.5 in

PROVENANCE

Alexander Iolas Gallery, Paris, France

Private collection, Milan, Italy

Sotheby's, London, 27 June 2013

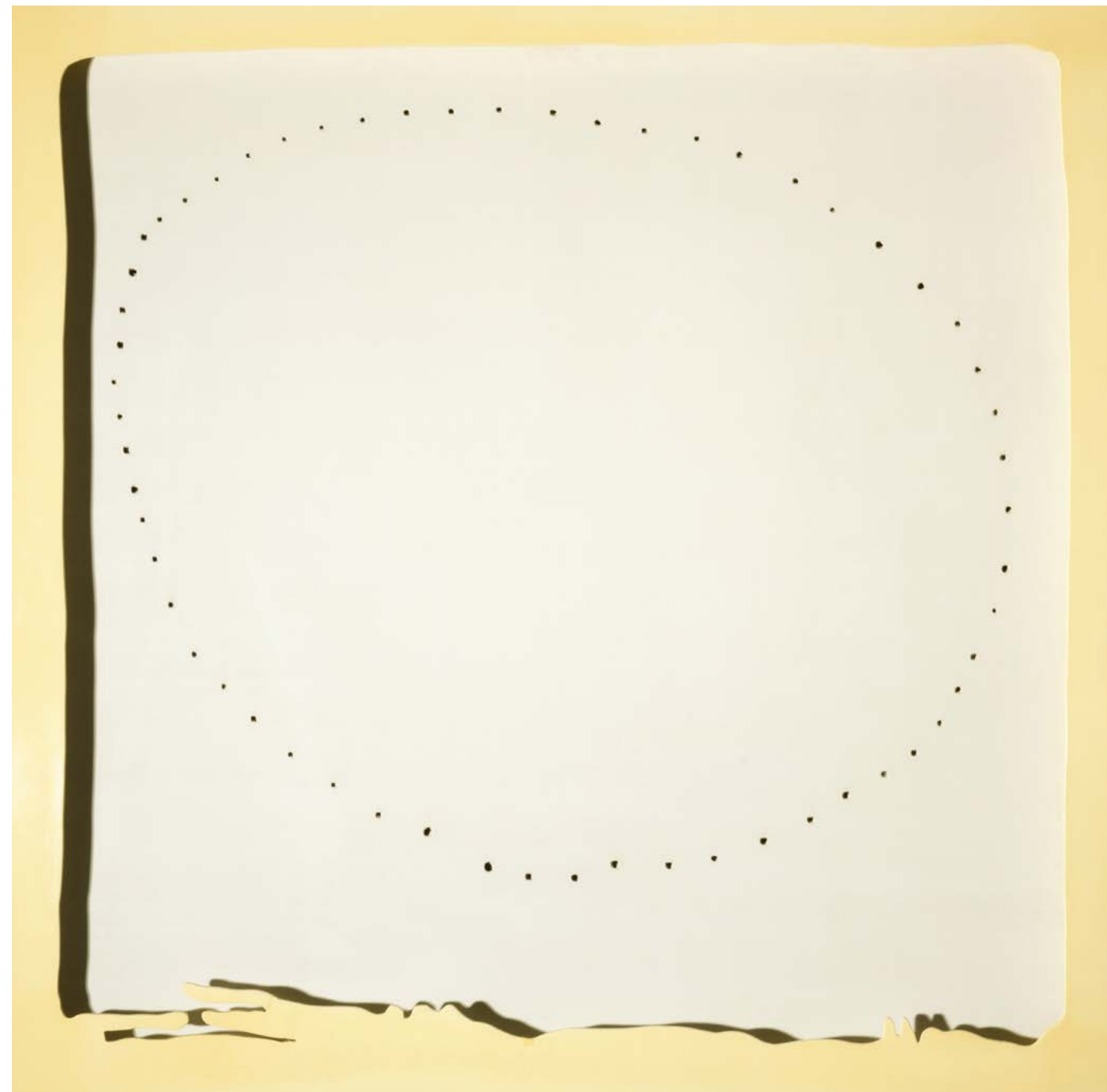
Private collection

LITERATURE

Enrico Crispolti, Lucio Fontana, Catalogue raisonné des Peintures, sculptures et environnements spatiaux, vol. II, ed. La Connaissance, Brussels, 1974, p. 168, No. 63 TE 13, ill.

CERTIFICATE

This work is referenced in the catalogue raisonné



Enrico Castellani

1930 - 2017

Superficie bianca

1990

Signed, titled and dated on the reverse
Acrylic on shaped canvas
120 x 120 cm | 47.2 x 47.2 in

PROVENANCE

Galleria Cardì, Milan, Italy
Simonelli collection, Milan, Italy
Private collection, Italy

CERTIFICATE

This work is registered in the Archives Enrico Castellani, Milan, n. 90-016



Turi Simeti

1929 - 2021

Quattro Ovali Rossi
2002

Acrylic on shaped canvas
120 x 100 cm | 47.2 x 39.4 in



Victor Vasarely

1906 - 1997

Anadyr-R

1956 - 1973

Signed on the lower right; signed, titled and dated on the reverse
Oil on canvas
100 x 90 cm | 39.4 x 35.4 in

PROVENANCE

Private collection, Paris, France (acquired from Tarica Ltd. in 1991)

CERTIFICATE

Certificate issued by Madame Michèle Vasarely / This work has been authenticated by Mr Pierre Vasarely, who dated it circa 1973. This work is listed in the archives of Mr Pierre Vasarely



Yves Klein

1928 - 1962

Table Monopink™
2015

Pink pigment, glass, plexiglass, wood and steel
38 x 125 x 100 cm | 15 x 49.2 x 39.4 in



Yves Klein

1928 - 1962

Table Monogold™
2015

3000 sheets of gold leaf, glass, plexiglass, wood and steel
38 x 125 x 100 cm | 15 x 49.2 x 39.4 in



Philippe Hiquily

1925 - 2013

Mobile l'Australienne

Painted steel
Edition of 4
200 cm | 78.7 in

PROVENANCE
Artist's studio



Joana Vasconcelos

b. 1971

Larme

Signed, titled and dated on the reverse
Mixed media
130 x 60 x 50 cm | 51.2 x 23.6 x 19.7 in

PROVENANCE
Artist's studio

CERTIFICATE
The artist has confirmed the authenticity of this work



Pablo Atchugarry

b. 1954

Untitled

2003

Statuary Carrara Marble
137 x 27 x 25.5 cm | 53.9 x 10.6 x 10 in

PROVENANCE
Artist's studio



Pablo Atchugarry

b. 1954

Untitled

2008

Portugal pink marble

96 x 33.5 x 33.5 cm | 37.8 x 13.2 x 13.2 in

PROVENANCE

Artist's studio



Pablo Atchugarry

b. 1954

Untitled

2017

Bronze with automotive paint
123.5 x 29.5 x 13.5 cm | 48.6 x 11.6 x 5.3 in

PROVENANCE
Artist's studio



Pablo Atchugarry

b. 1954

Untitled

2019

Statuary carrara marble
132 x 33 x 26 cm | 52 x 13 x 10.2 in

PROVENANCE
Artist's studio



Alexander Calder

1898 - 1976

Highway
1973

Signed and dated
Gouache and ink on paper
74.9 x 109.9 cm | 29.5 x 43.3 in

PROVENANCE
Galerie Maeght, Paris, France
Galerie Bel'Art, Stockholm, Sweden (acquired from the above in 1974)
Private collection (acquired from the above in 1974)
Sotheby's, New York, United States, 12 November 2014, lot 223

CERTIFICATE
This work is registered in the archives of the Calder Foundation, New York, under
application number A12328



Sam Francis

1923 - 1994

Untitled

1987

Acrylic on canvas
183.2 x 183.2 cm | 72.1 x 72.1 in

PROVENANCE

Yayoi Gallery, Tokyo, China
Idemitsu Museum of Arts, Japan (July 1993)

EXHIBITED

Nagoya City Art Museum; Shiga, Museum of Modern Art; and Gunma, Hara Museum ARC, *Abstraction 5: John Altoon, Sam Francis, Craig Kauffman, John McLaughlin, and Ed Moses*, March - August 1990 (Nagoya City Art Museum, Nagoya: 17 March - 22 April 1990; Museum of Modern Art, Shiga. 19 May - 24 June 1990; Hara Museum ARC, Gunma. 30 June - 5 August 1990) cat. no. 8, p. 44, ill. in colour

Bonn, Kunst- und Ausstellungshalle der Bundesrepublik Deutschland, *Sam Francis*, February - April 1993, pp. 222-23, ill. in colour

Tokyo, Idemitsu Museum of Arts; Osaka, Idemitsu Museum, *Sam Francis: From the Idemitsu Collection*, June 2000 - April 2001 (Idemitsu Museum of Arts, Tokyo: 27 June - 6 August 2000; Idemitsu Museum, Osaka: 9 January - 12 February 2001 (part I); 20 February - 1 April 2001 (part II), cat. no. 55, p. 55, ill. in colour

Toyama, Museum of Modern Art; Chiba, Kawamura Memorial Museum of Art; Ehime, Museum of Art Ehime; Tokyo, Museum of Contemporary Art; Fukushima, Iwaki City Art Museum; Oita, Oita City Art Museum, *Sam Francis: From the Idemitsu Collection*, August 2002 - October 2003 (Museum of Modern Art, Toyama : 10 August - 16 September 2002; Kawamura Memorial Museum of Art, Chiba: 28 September - 10 November 2002; Museum of Art Ehime, Ehime : 16 November - 23 December 2002; Museum of Contemporary Art, Tokyo: 5 April - 25 May 2003; Iwaki City Art Museum, Fukushima: 3 June - 6 July 2003; Oita City Art Museum, Oita: 13 September - 26 October 2003), cat. no. 54, p. 82, ill. in colour, ill. on the cover

LITERATURE

Debra Burchett-Lere, Ed., *Sam Francis: Catalogue raisonné of Canvas and Panel Paintings 1946-1994*, Berkeley 2011, DVD, cat. no. SFF.1404 (ill.)

CERTIFICATE

The Sam Francis Archives have confirmed the authenticity of this work under no. SFP87-54



Chu Teh-Chun

1920 - 2014

Untitled

1974

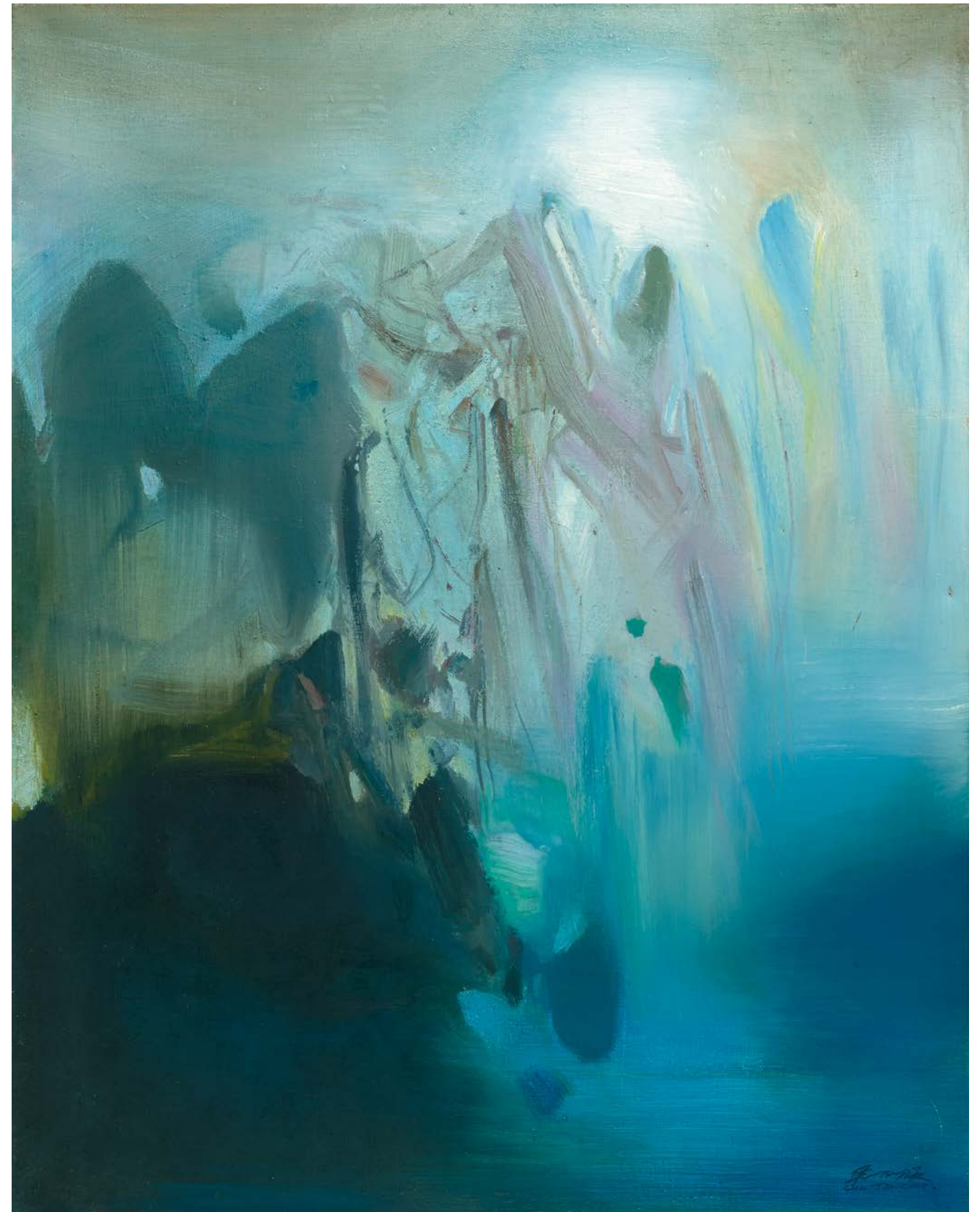
Signed on the lower right
Oil on canvas
92 x 72 cm | 36.2 x 28.3 in

PROVENANCE

Private collection, France
Tajan, Paris, 10 March 2015, lot 54
Opera Gallery, Hong Kong, China
Private collection, United States

CERTIFICATE

Chu Ching-Chao, spouse of the artist, has confirmed the authenticity of this work



Kazuo Shiraga

1924 - 2008

Untitled

Circa 1980

Watercolour on paper
90.5 x 180 cm | 35.6 x 70.9 in

PROVENANCE
Private collection, Tokyo, Japan

CERTIFICATE
The Japan Art Dealers Association issued a certificate by Kazuo Shiraga
Authentication Committee



Kazuo Shiraga

1924 - 2008

Untitled

1983

Signed and dated on the lower left, signed on the reverse

Watercolor on paper

24 x 31.5 cm | 9.4 x 12.4 in

PROVENANCE

Private collection

CERTIFICATE

The Japan Art Dealers' Association has confirmed the authenticity of this artwork



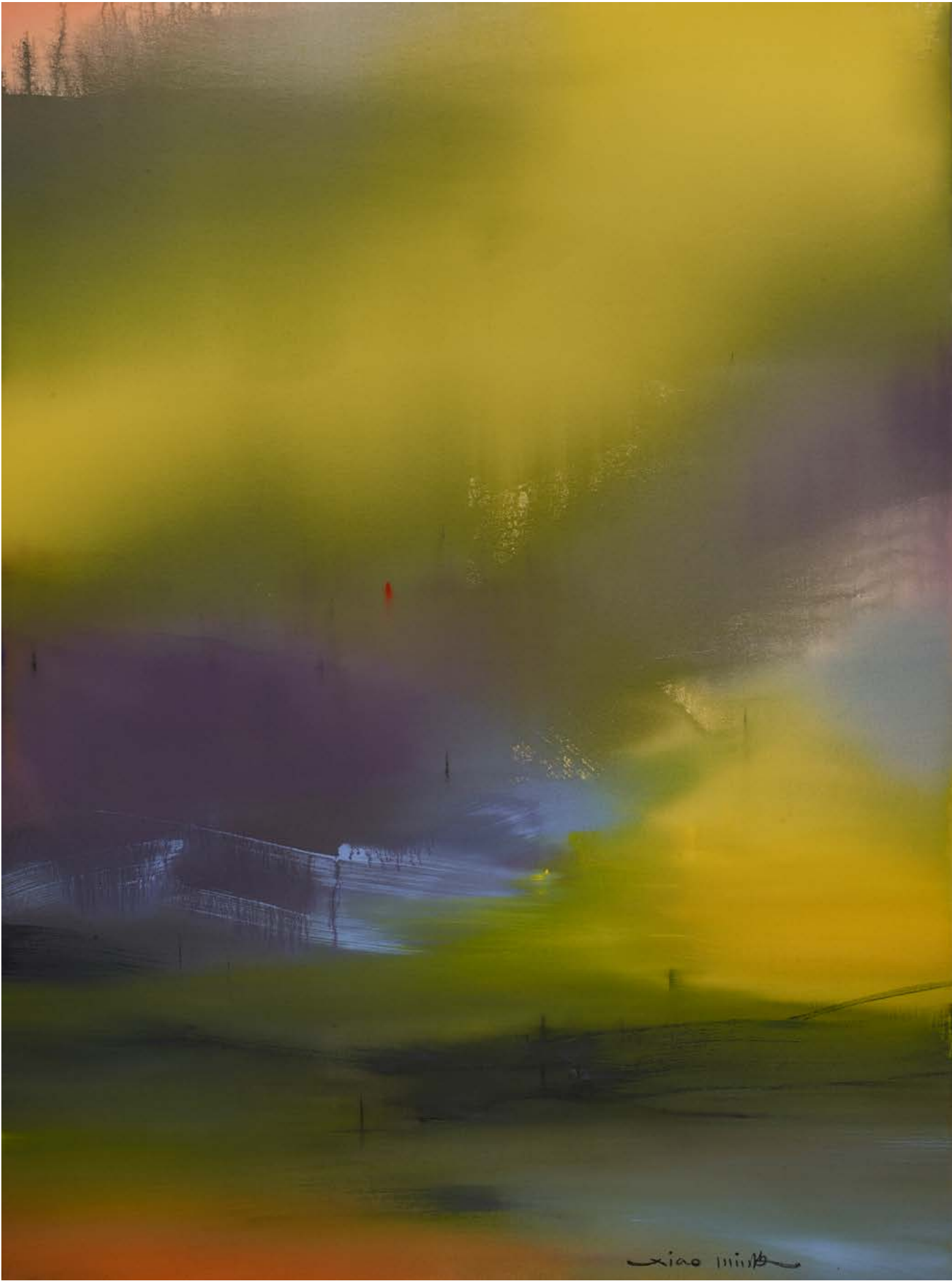
Feng Xiao-Min

b. 1959

Composition n°10.3.20
2020

Acrylic on canvas
130 x 97 cm | 51.2 x 38.2 in

PROVENANCE
Artist's studio



Feng Xiao-Min

b. 1959

Composition n°12.3.21
2021

Acrylic on canvas
162 x 130 cm | 63.8 x 51.2 in

PROVENANCE
Artist's studio



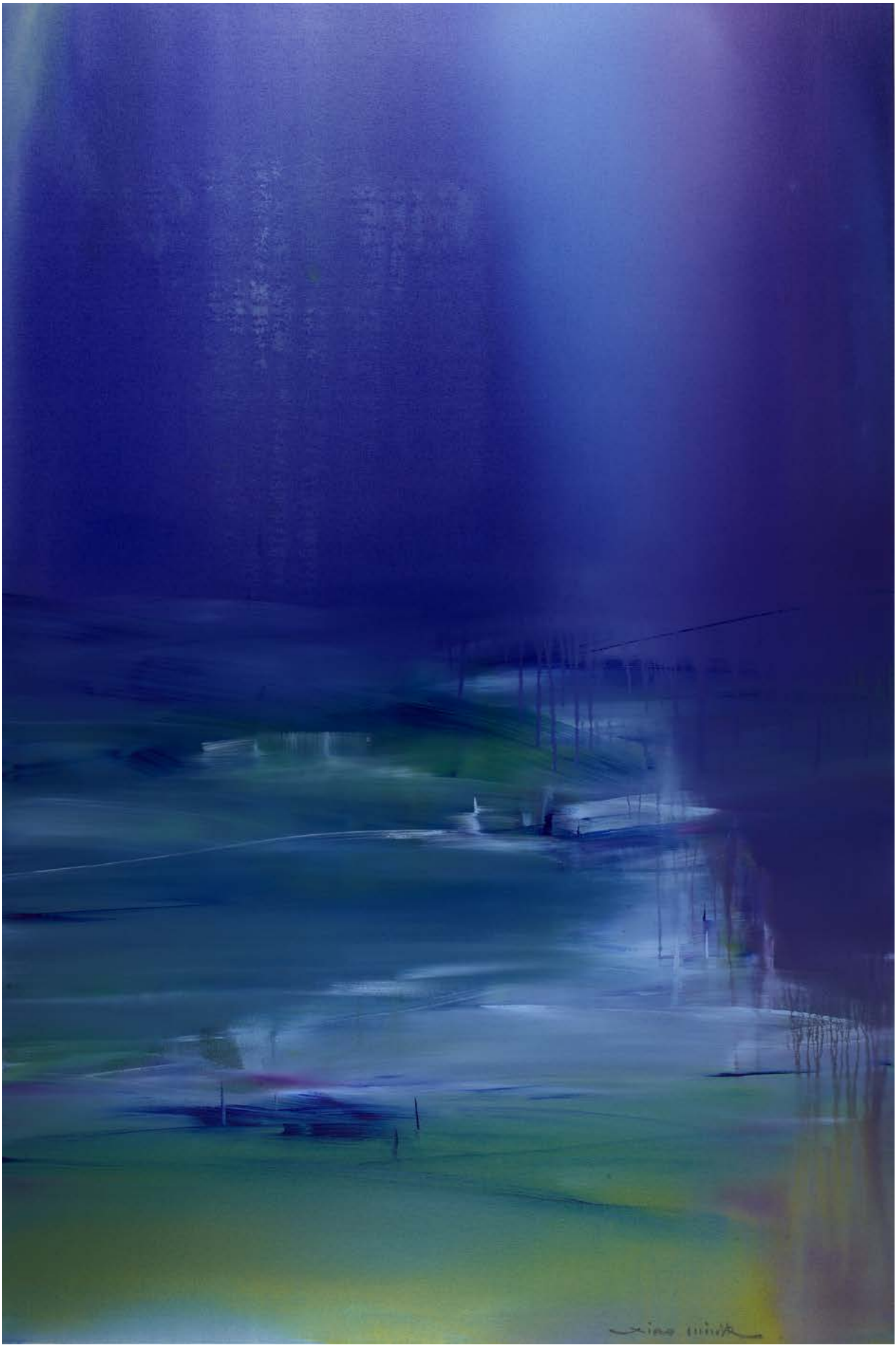
Feng Xiao-Min

b. 1959

Composition n°25.1.21
2021

Acrylic on canvas
195 x 130 cm | 76.8 x 51.2 in

PROVENANCE
Artist's studio



NEW YORK
791 Madison Avenue
New York, NY 10065
T. +1 646 707 3299
nyc@operagallery.com

MIAMI
151 NE 41st Street, Suite 131,
Paradise Plaza
Miami Design District
Miami, FL 33137
T. +1 305 868 3337
miami@operagallery.com

BAL HARBOUR
The St. Regis Bal Harbour Resort
9703 Collins Avenue, Lobby Floor
Miami Beach, FL 33154
T. +1 305 861 9022
balharbour@operagallery.com

ASPEN
501 E Dean Street
Residences at the Little Nell
Aspen, CO 81611
T. +1 970 710 7289
aspen@operagallery.com

LONDON
134 New Bond Street
London W1S 2TF
T. +44 (0)20 7491 2999
london@operagallery.com

PARIS
62 rue du faubourg Saint-Honoré
75008 Paris
T. +33 (0)1 42 96 39 00
paris@operagallery.com

MONACO
1 avenue Henri Dunant
Palais de la Scala
98000 Monaco
T. +377 9797 5424
monaco@operagallery.com

GENEVA
Place de Longemalle 10-12
1204 Geneva
T. +41 (0)22 318 57 70
geneve@operagallery.com

DUBAI
Gate Village Building 3
Dubai International Financial Centre
Dubai
T. +971 (0)4 323 0909
dubai@operagallery.com

BEIRUT
Foch 94, Foch Avenue
Beirut Central District
T. +961 (0)1 971 471
beirut@operagallery.com

HONG KONG
The Galleria, Shop G08-09
9 Queen's Road Central,
Central, Hong Kong
T. +852 2810 1208
hkg@operagallery.com

SINGAPORE
2 Orchard Turn
#02-16 Ion Orchard
Singapore 238801
T. +65 6735 2618
spore@operagallery.com

SEOUL
18 Eonju-ro 154 gil
Gangnam-gu
Seoul 06021
T. +82 (0)2 3446 0070
seoul@operagallery.com

Cover:
Sam Francis, *Untitled*, 1987

All rights reserved. Except for the purpose of review, no part of this book may be reproduced, stored in a retrieval system, or transmitted, in any form by any means, electronic, mechanical, photocopying, recording or otherwise, without the prior permission of the publishers.

OPERA GALLERY

operagallery.com

