

*Portrait of a Lady*

OPERA GALLERY

*Portrait of a Lady*

13<sup>th</sup> September to 24<sup>th</sup> October, 2018

OPERA GALLERY

Yasmina Alaoui (b. 1977) & Marco Guerra (b. 1965)

*Pink 1, 2009*

Signed and numbered on reverse  
C-print on diasec, edition of 5  
127 x 127 cm | 50 x 50 in

Provenance  
Artist's studio





*Green 1, 2009*

Signed and numbered on the reverse  
C-print on diasec, edition of 3  
94 x 112 cm | 37 x 44 in

Provenance  
Artist's studio

Paul Alexis (b. 1947)

*Le Regard de Liz, 2015*

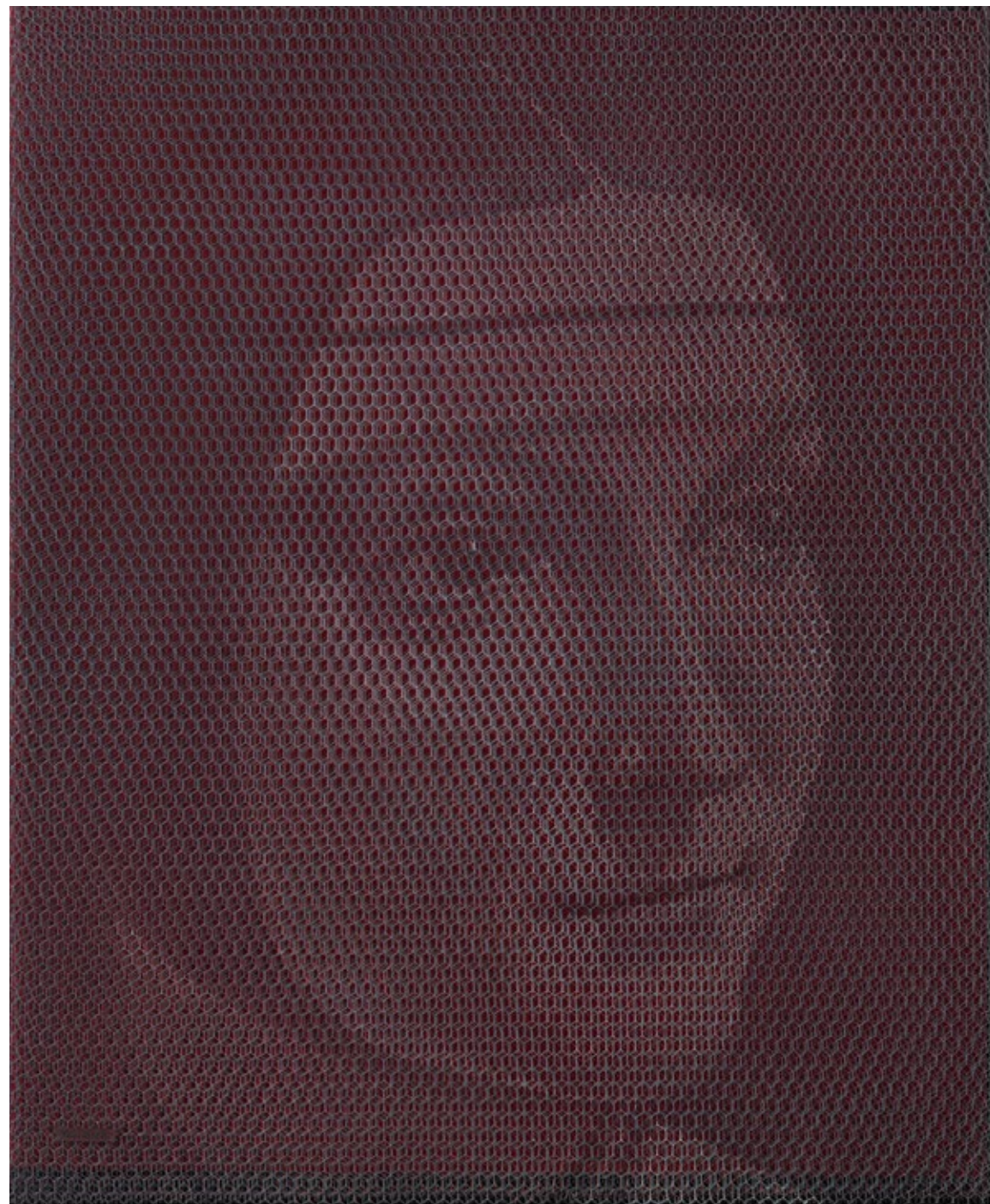
Signed on the lower left

Oil on steel wire on canvas

140 x 115 cm | 55.1 x 45.3 in

Provenance  
Artist's studio





*Cecilia, homage à Vinci, 2014*

Signed on the lower left

Oil on steel wire on canvas

140 x 115 cm | 55.1 x 45.3 in

Provenance  
Artist's studio

*BB (Rose) (Du nid d'abeille au pixel), 2012*

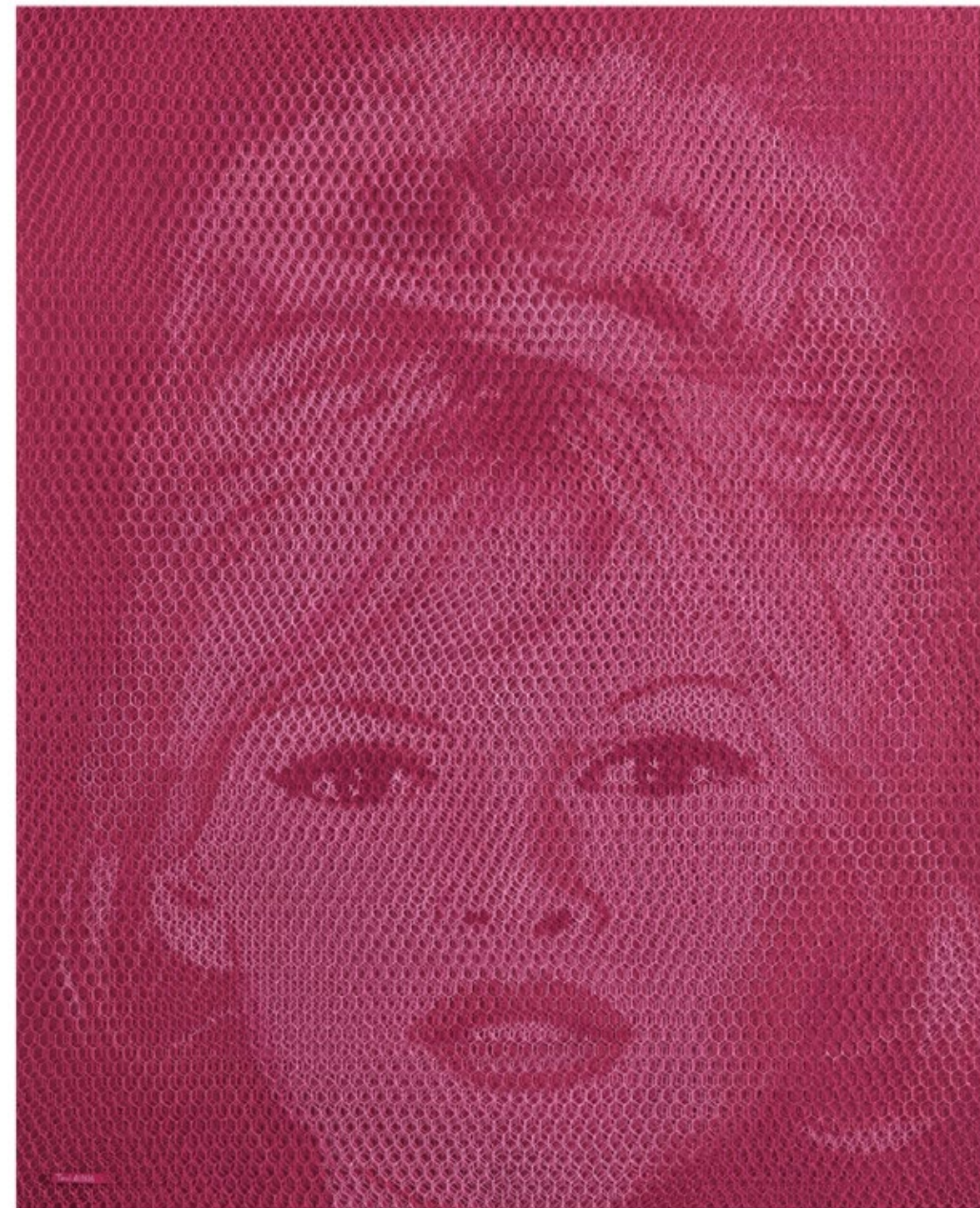
Signed on the lower left

Oil on steel wire on canvas

140 x 115 cm | 55.1 x 45.3 in

Provenance

Artist's studio



Roberto Bernardi (b. 1974)

*Marilyn, 2016*

Signed on the lower right

Oil on canvas

120 x 120 cm | 47.2 x 47.2 in

Provenance  
Artist's studio





Joe Black (b. 1973)



(detail)

*The Gift, 2016*

Signed, dated and titled on the reverse

9,100 spray-painted upholstery tacks pinned on foam, mounted aluminium & finished with

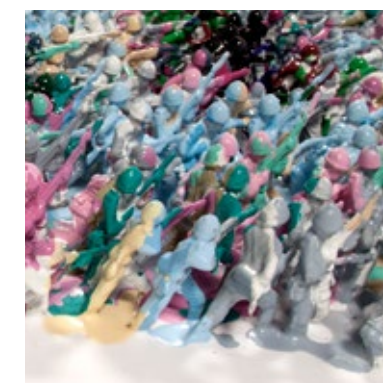
resin & high gloss lacquer coating

140 x 140 x 12.5 cm | 55.1 x 55.1 x 4.9 in

Provenance

Artist's studio





(detail)

*Beat Goes On / Military Girl, 2016*

7,140 hand-painted plastic toy soldiers on aluminium with resin coating  
192 x 144 cm | 75.6 x 56.7 in

Provenance  
Artist's studio

Fernando Botero (b. 1932)

*Woman with Lipstick, 2016*

Signed and dated on the lower right

Oil on canvas

98 x 78 cm | 38.6 x 30.7 in

Provenance

Private collection, Miami

Certificate

The artist has confirmed the authenticity of this work



Louis Boudreault (b. 1956)

*Sophia Loren, 2013*

Signed, dated and titled on the reverse

Mixed media

214 x 153 cm | 84.3 x 60.2 in

Provenance  
Artist's studio



André Brasilier (b. 1929)

*Jardin devant la mer, 1993*

Signed on the lower left

Oil on canvas

162 x 114 cm | 63.8 x 44.9 in

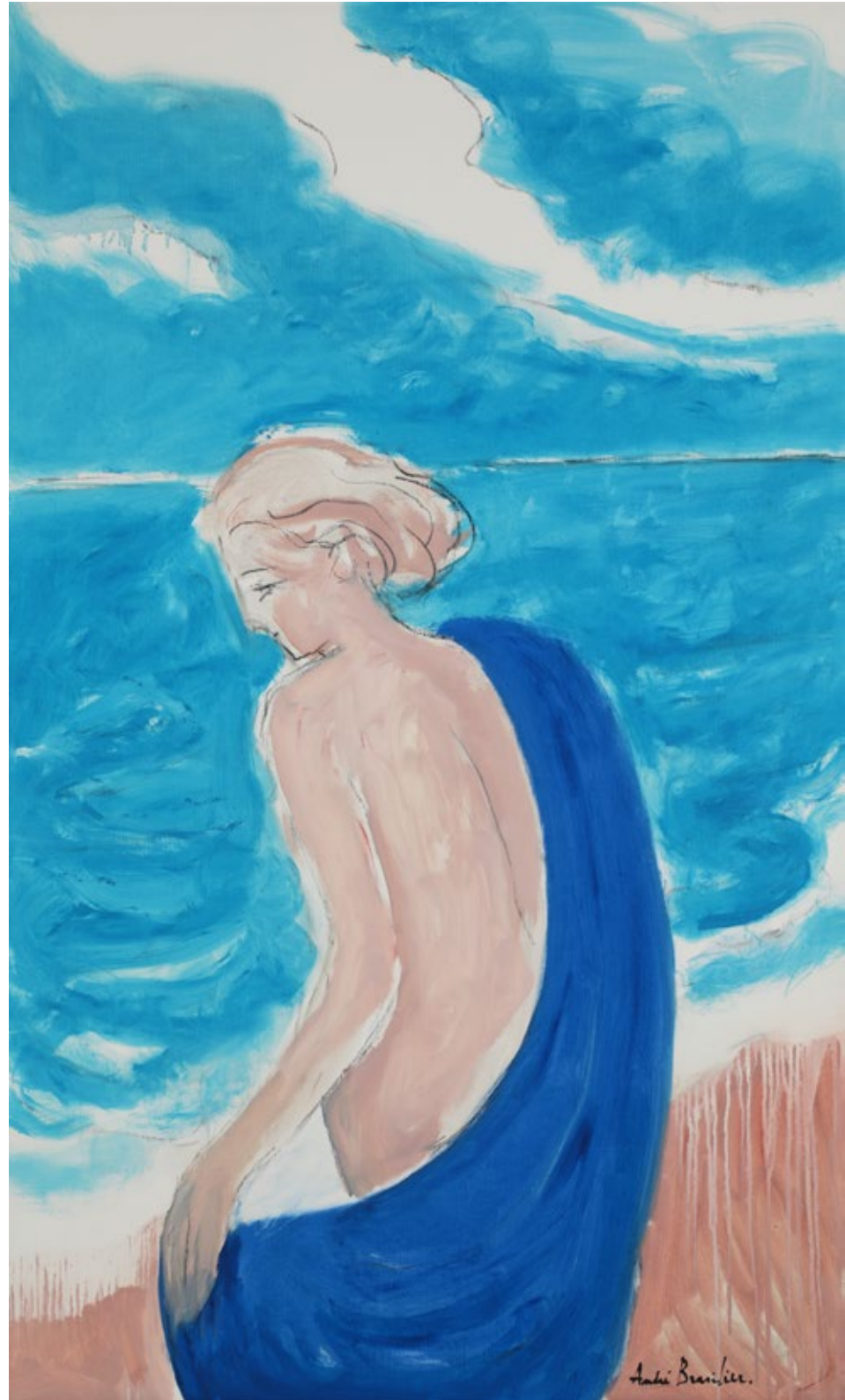
Provenance

Private collection

Certificate

Alexis Brasilier has confirmed the authenticity of this artwork





*L'Été bleu, 2015*

Signed on the lower right

Oil on canvas

146 x 89 cm | 57.5 x 35 in

Provenance

Artist's studio

Certificate

Alexis Brasilier has confirmed the authenticity of this artwork

*Vision, 1985*

Signed on the lower right

Oil on canvas

114 x 146 cm | 44.9 x 57.5 in

Provenance

Private collection

Certificate

Alexis Brasilier has confirmed the authenticity of this artwork



Lita Cabellut (b. 1961)

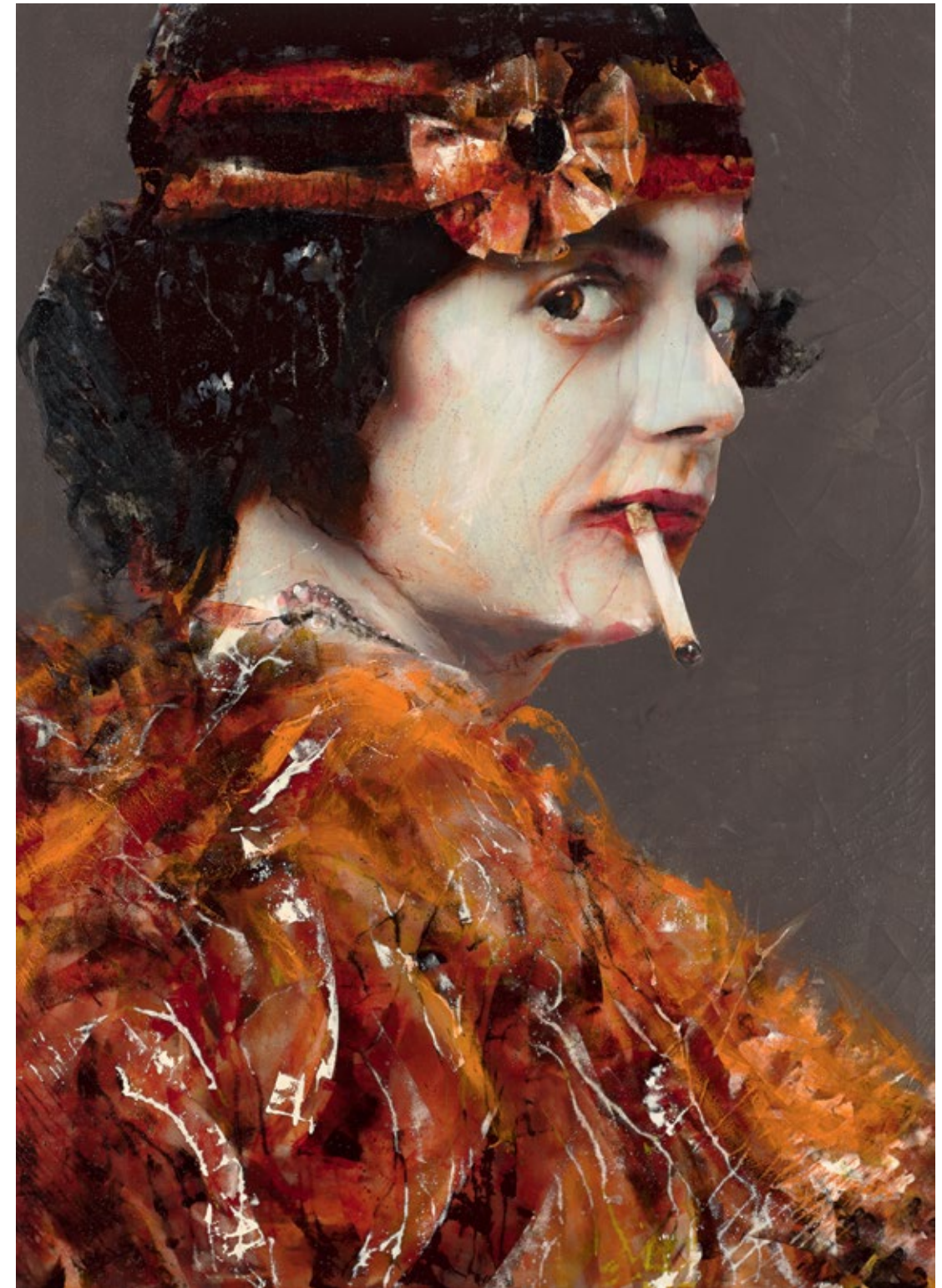
*Coco 42, 2011*

Signed, dated and titled on the reverse

Mixed media on canvas

280 x 200 cm | 110.2 x 78.7 in

Provenance  
Artist's studio







*Coral Flowers 04, 2015*

Signed, dated and titled on the reverse

Mixed media on canvas

200 x 180 cm | 78.7 x 70.9 in

Provenance  
Artist's studio

Umberto Ciceri (b. 1961)

*Human Tics n° 686, 2014*

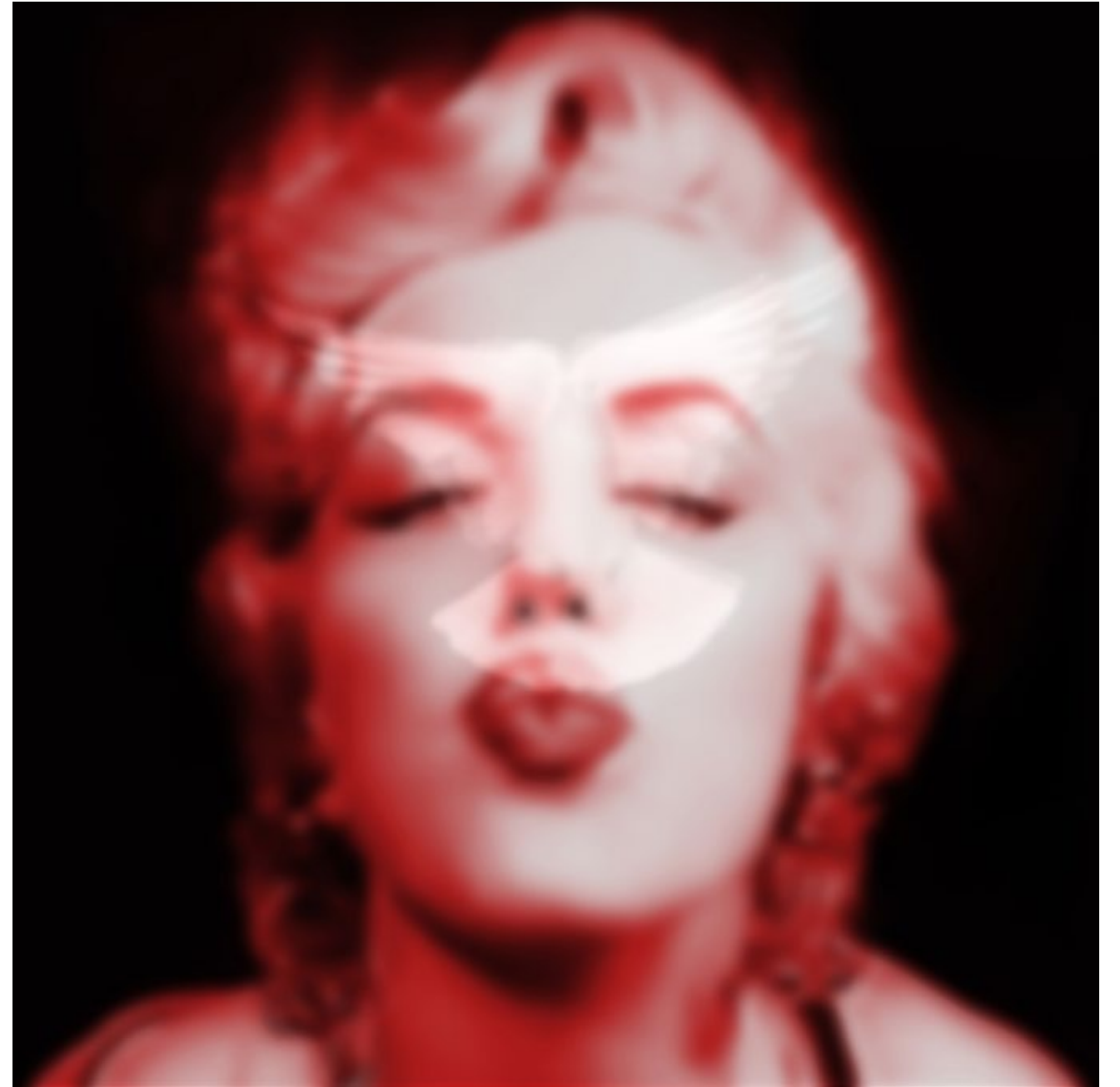
Signed on the reverse

Handmade lenticular

80 x 80 cm | 31.5 x 31.5 in

Provenance

Artist's studio



Mauro Corda (b. 1960)

*Eve, 2002*

Signed and numbered

Silver-coated bronze, edition of 8

41 x 30 x 20 cm | 16.1 x 11.8 x 7.9 in

Provenance  
Artist's studio





*L'Escalier, 2001*

Signed and numbered  
Bronze, edition of 8

80 x 32 x 15 cm | 31.5 x 12.5 x 6 in

Provenance  
Artist's studio

*Contorsionniste XXIV, 2013*

Signed and numbered on the back of the right hand

White bronze, edition of 8

28 x 75 x 25 cm | 11 x 29.5 x 9.8 in

Provenance  
Artist's studio



Niki de Saint Phalle (1930 - 2002)

*La Femme au sac à main, 1969-1970*

Painted polyester resin relief  
124.5 x 98 cm | 49 x 38.6 in

Provenance  
Galerie Bonnier, Geneva  
Private collection, USA



Clive Head (b. 1965)

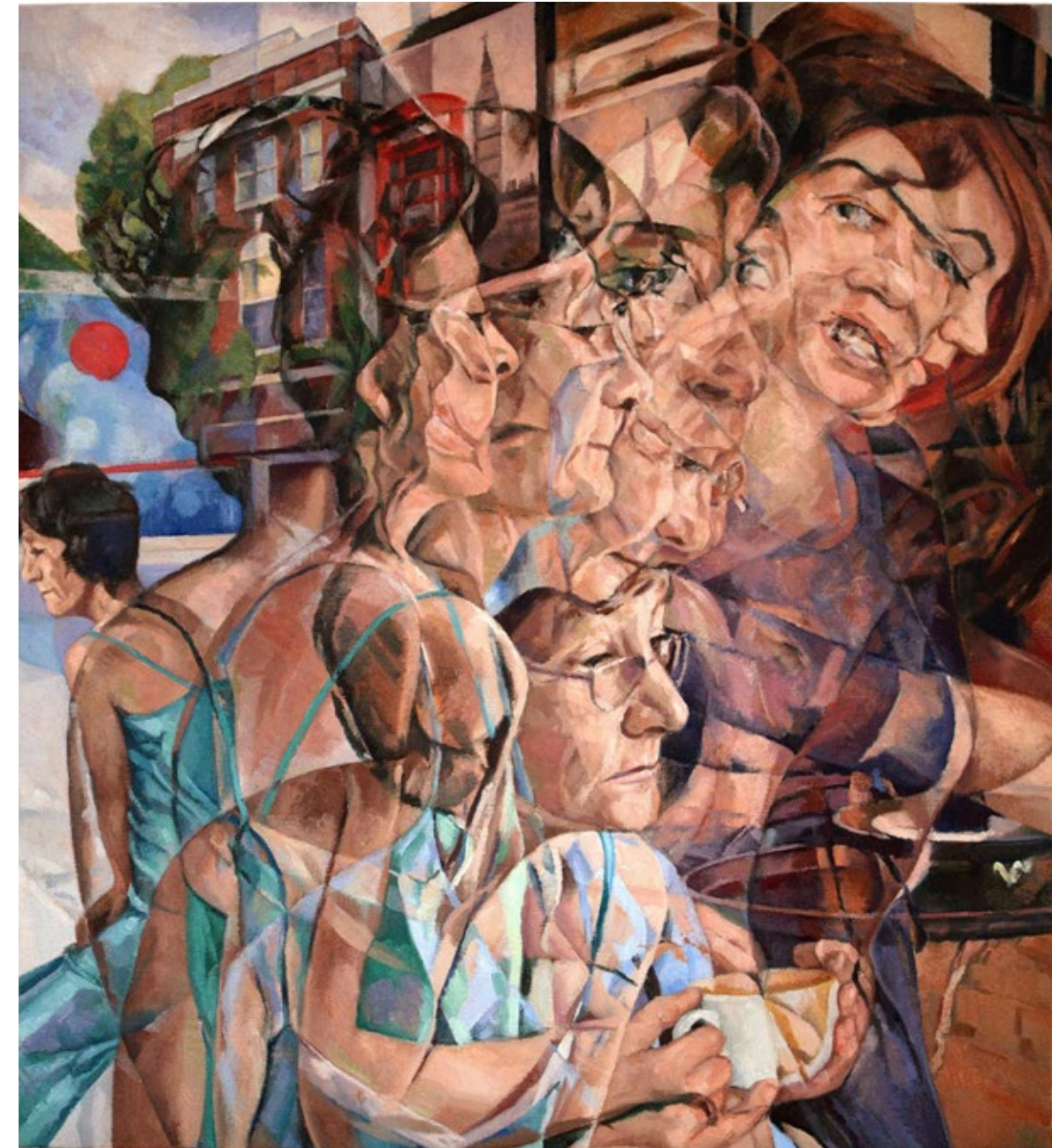
*The Milliner's Dream, 2017*

Signed on the reverse

Oil on canvas

76.2 x 68.6 cm | 30 x 27 in

Provenance  
Artist's studio



Mari Kim (b. 1979)

*Jasmine H, 2010*

C print  
102 x 102 cm | 40.2 x 40.2 in

Provenance  
Artist's studio





Douglas Kirkland (b. 1934)

*Sophia Loren, 1972*

Signed and numbered on the lower right, dated and titled on the lower left

Photography, edition of 25

101.6 x 152.4 cm | 40 x 60 in

Provenance  
Artist's studio



David LaChapelle (b. 1963)



*Madonna: Time Lapse Photograph Spiritual Value, 1998*

Chromogenic print, edition of 7  
73.7 x 101.5 cm | 29 x 40 in

Provenance  
Artist's studio



*Bjork: Visible Virtues, 2001*

Signed and numbered  
C print, edition of 3  
112 x 152.5 cm | 44.1 x 60 in

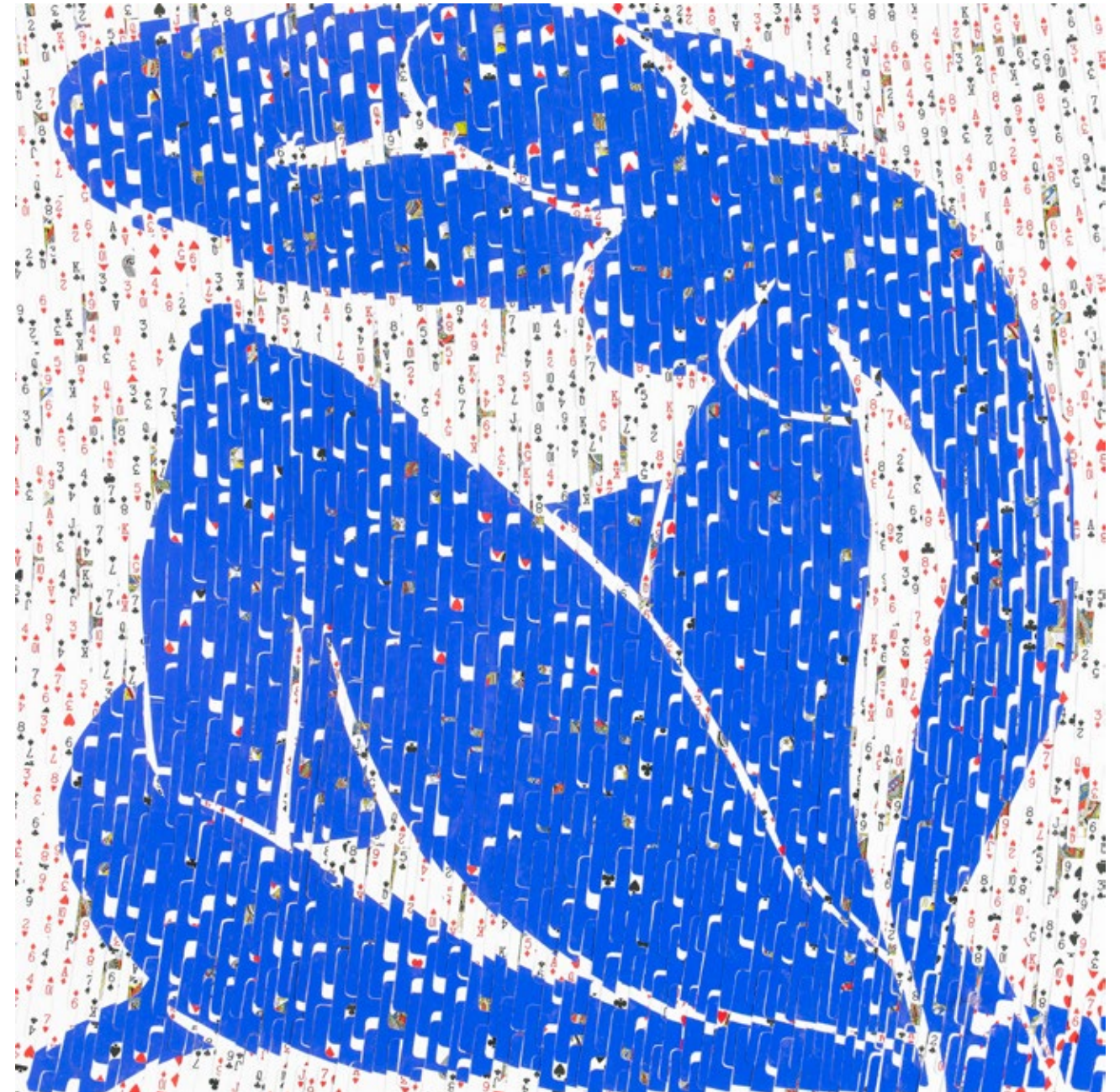
Provenance  
Artist's studio

David Mach (b. 1956)

*Matisse, 2012*

Mixed media postcards on wood  
100 x 100 cm | 39.4 x 39.4 in

Provenance  
Artist's studio



Henri Matisse (1869-1954)

*Femme et bouquets, 1940*

Signed and dated on the lower left

Pencil on paper

52.5 x 40.5 cm | 20.7 x 15.9 in

Provenance

Lynn G. Epstein, New York

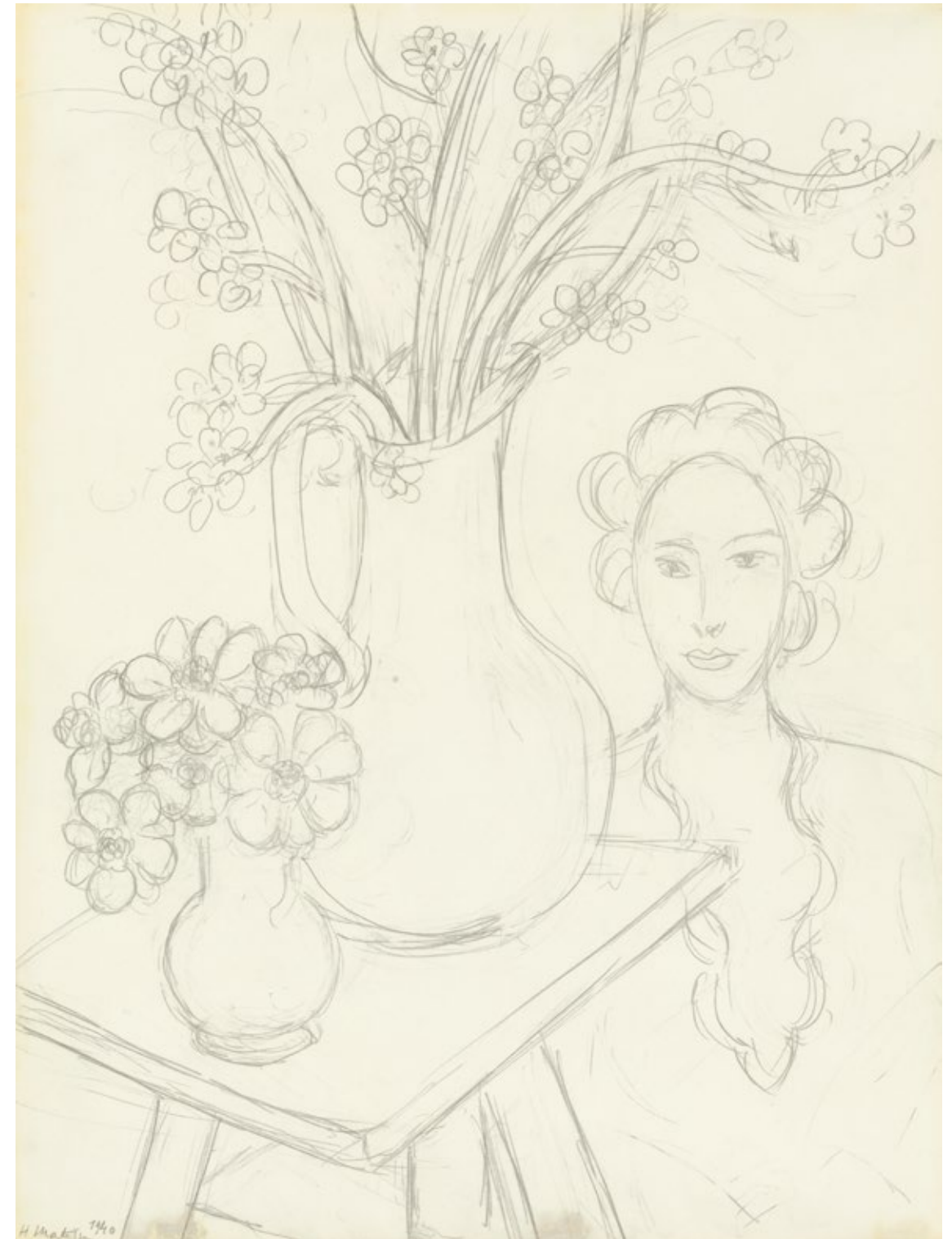
Private collection (1981)

Literature

Pierre Schneider, *Matisse*, London, Flammarion, 1984, p. 148, ill. p. 149

Certificate

Ms. Duthuis has confirmed the authenticity of this work



André Monet (b. 1965)

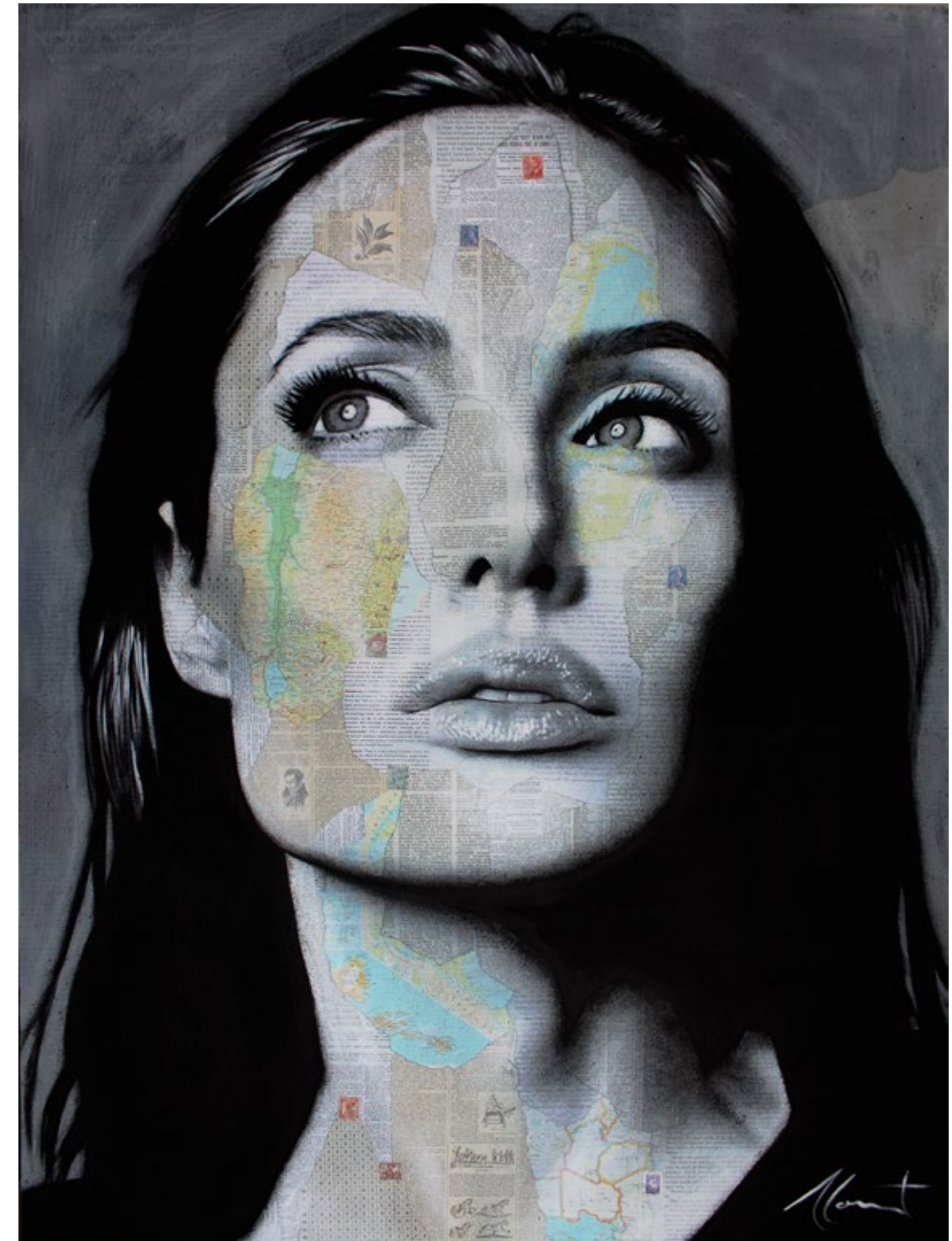
*Angelina, 2016*

Signed on the lower right and titled on the reverse

Mixed media

122 x 91.5 cm | 48 x 36 in

Provenance  
Artist's studio





*Coco, 2015*

Signed on the lower left and titled on the reverse

Mixed media

96.5 x 76 cm | 38 x 30 in

Provenance  
Artist's studio

*Breakfast at Tiffany's, 2015*

Signed on the lower right and titled on the reverse

Mixed media

137 x 101.5 cm | 54 x 40 in

Provenance  
Artist's studio





Mr. Brainwash (b. 1966)

*Kate Moss, 2009*

Signed on the right side, signed, dated, titled and numbered on the reverse  
Silkscreen and acrylic paint on canvas  
106.7 x 106.7 cm | 42 x 42 in

Provenance  
Artist's studio



Julian Opie (b. 1958)

*Fiona, Artist 3, 2001*

Signed on the reverse

Vinyl on wooden stretcher

192 x 142 cm | 75.6 x 55.9 in

Provenance  
Artist's studio



Marc Quinn (b. 1964)

*Big Girl, 2006*

Signed, dated and titled on the lower left  
Watercolour on paper  
153 x 101.5 cm | 60.2 x 40 in

Provenance  
Artist's studio





*Sphinx, 2006*

Signed, dated and titled on the lower right  
Watercolour on paper  
153 x 101 cm | 60.2 x 39.8 in

Provenance  
Artist's studio

*Endless Column (Micro Cosmos), 2008*

Signed, dated and numbered under the base

Painted bronze, edition of 7

69 x 21 x 23 cm | 27.2 x 8.3 x 9.1 in

Provenance

Artist's studio

Private collection



Gérard Rancinan (b. 1953)

*Monica Vanité II, 2006*

Signed and numbered on the reverse  
Argentique print mounted on Plexiglas, edition of 8  
100 x 81 cm | 39.4 x 31.9 in

Provenance  
Artist's studio



Jean-Pierre Roc-Roussey (b. 1951)

*Fête coréenne, 2008*

Signed on the right side

Oil on canvas

190 x 70 cm | 74.8 x 27.6 in

Provenance  
Artist's studio





*Mogador, 2017*

Signed on the upper right

Oil on canvas

178 x 178 cm | 70.1 x 70.1 in

Provenance  
Artist's studio



Kenny Scharf (b. 1958)



*The Three Faces of Jackie the American, 1997*

Silkscreen print, edition of 150  
114.5 x 89 cm | 45 x 35 in

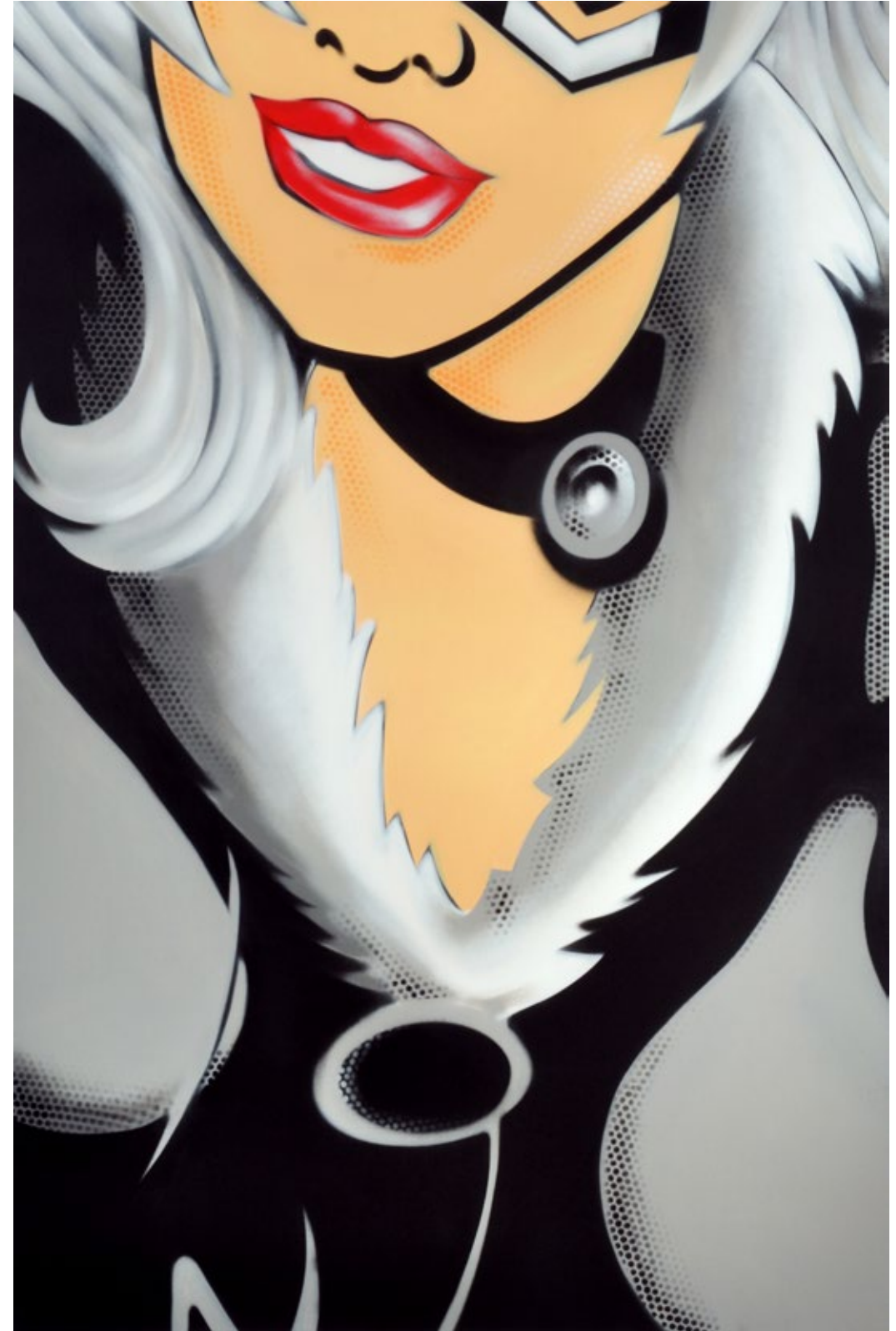
Provenance  
Private collection

SEEN (b. 1961)

*Black Cat, 2008*

Signed and dated on the reverse  
Aerosol on canvas  
195 x 130 cm | 76.8 x 51.2 in

Provenance  
Private collection



Laurent Segretier (b. 1978)

*Fragments 34, 2011-2012*

Signed and numbered on the reverse

Fine art print on acid free watercolour paper, edition of 5

140 x 117 cm | 51.1 x 46.1 in

Provenance

Private collection



Seo Young-Deok (b. 1983)

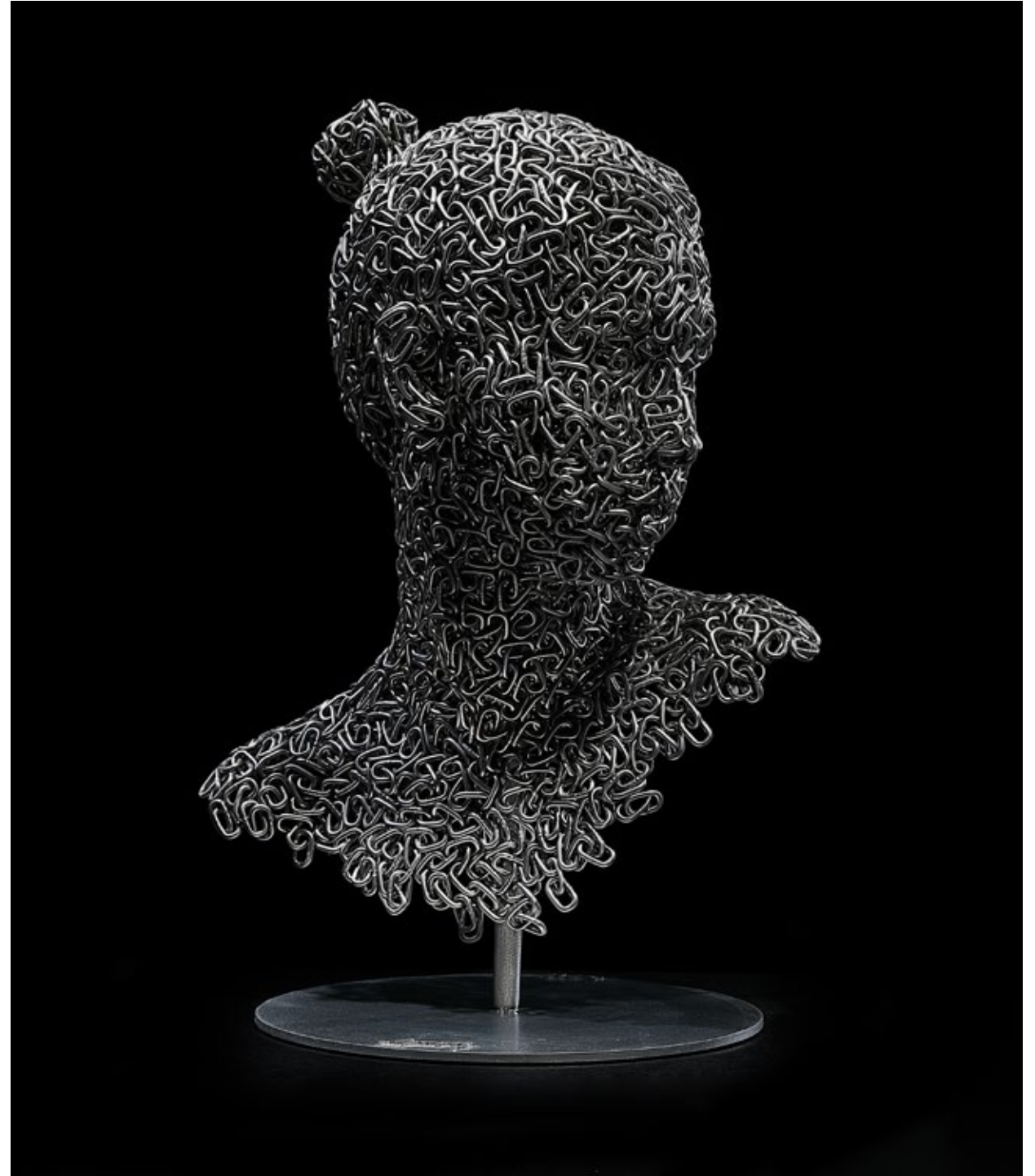
*Nirvana 37, 2018*

Signed, dated and titled on the base

Stainless chain, edition of 20

55 x 31 x 40 cm | 21.7 x 12.2 x 15.7 in

Provenance  
Artist's studio



Manolo Valdés (b. 1942)

*Dorothy I, 2017*

Signed and dated on the reverse  
Oil and collage on board  
173 x 152 cm | 68.1 x 59.8 in

Provenance  
Artist's studio





*Fiori, 2015*

Signed and numbered on the back of the neck

Bronze, unique piece

124 x 180 x 71 cm | 48.8 x 70.9 x 28 in

Provenance

Artist's studio

Forsblom Gallery, Helsinki

Private collection, Europe

Ellen von Unwerth (b. 1954)

*Naomi's Roller, Los Angeles, 1991, for Interview magazine*

Signed, dated and titled on the reverse

Black & white print on Barythé paper, edition of 7

100 x 70 cm | 39.4 x 27.6 in

Provenance  
Artist's studio





*Claudia Schiffer, Morocco, 1989, for a Guess campaign*

Signed, dated and titled on the reverse  
Black & white print on Barythé paper, edition of 3  
180 x 120 cm | 70.9 x 47.2 in

Provenance  
Artist's studio



*Spy Device, Bavaria, 2015, from the book Heimat, 2017*

Signed, dated and titled on the reverse

C-print on Fujiflex paper, edition of 7

100 x 70 cm | 39.4 x 27.6 in

Provenance  
Artist's studio

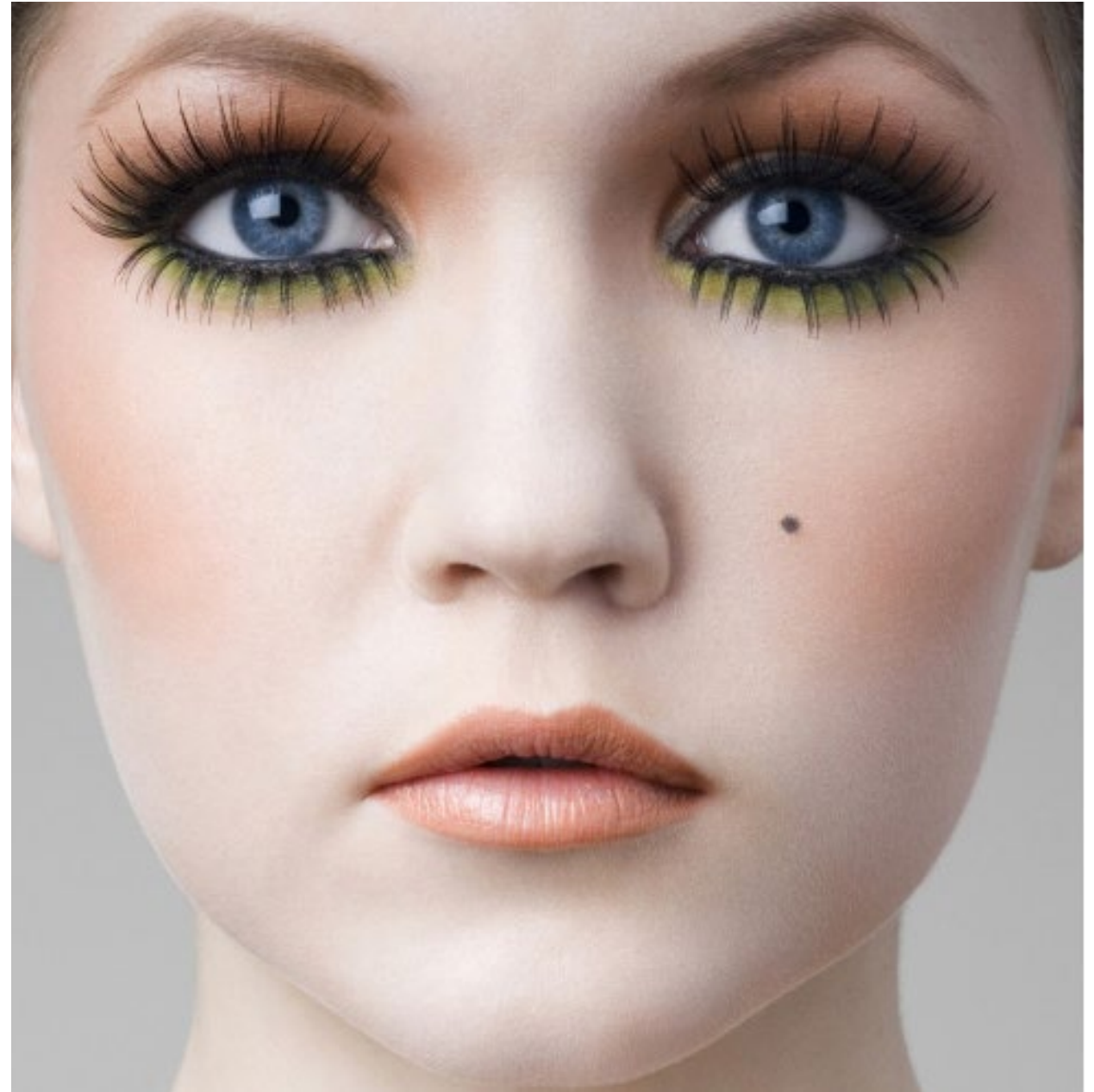


Flore Zoé (b. 1975)

*Porcelain: Lara, 2014*

Signed, dated, numbered and titled on the reverse  
Photography, edition of 5  
140 x 140 cm | 55.1 x 55.1 in

Provenance  
Artist's studio



Published by Opera Gallery to coincide with exhibition *Portrait of a Lady, 13<sup>th</sup> September to 24<sup>th</sup> October, 2018*

All rights reserved. Except for the purposes of review, no part of this book may be reproduced, stored in a retrieval system, or transmitted, in any form or by any means, electronic, mechanical, photocopying, recording or otherwise, without the prior permission of the publishers.

Cover detail: Paul Alexis, *BB (Rose) (Du nid d'abeille au pixel)*, 2012

OPERA GALLERY

18, Eonju-ro 154 gil, Gangnam-gu, Seoul 06021

+82 2 3446 0070 | [seoul@operagallery.com](mailto:seoul@operagallery.com)

[operagallery.com](http://operagallery.com)

