



BAE JOON SUNG

SOLO EXHIBITION HONG KONG

5 - 30 November 2015

*In the presence of the artist*

## FOREWORD

Interweaving motifs from classical paintings with contemporary techniques, Bae Joon Sung's work shifts between different times and regions. Exhibiting new pieces from the Korean artist's acclaimed series *Costume of a Painter*, Opera Gallery is pleased once again to explore the artist's disruption of the linearity of time and perception.

Using lenticular techniques, Bae Joon Sung represents a growing group of artists whose practice disrupts the two-dimensional plane. His interpretations of medium and space temporarily expand the limitations of perception, embracing this new realm as a way to connect with the viewer on multiple dimensions.

With his fascinating interplay of oil painting and lenticular interplay, Bae Joon Sung exquisitely suggests new ways of interacting with and looking at art.

GILLES DYAN  
Founder and president of Opera Gallery

SHIRLEY YABLONSKY  
Director Opera Gallery Hong Kong



## COSTUME OF PAINTER

Bae Joon Sung's work is about binaries. European classicism and global modernism; West and East; phantom and concrete. Familiar western figures appear as Korean women, both they and the image stripped of their original condition. In this new state Joon Sung revitalizes tradition, rescuing familiar artworks and settings from the reduction of fetishism and imbuing a mischievous spirit into both the work and the act of viewing. Nourishing two popular subjects of human voyeurism – the observation of the nude and the visual consumption of culture in museums and galleries – Joon Sung's paintings explore how we see and think about what we see in different contexts.

Utilizing the dynamics of space, environment and viewer, Joon Sung's meta-canvases both evoke and challenge conventional methods of observations and perception. In vivid detail and curious composition, the artist emphasizes the museum setting as a complex setting that suspends the past in the present. Using European architecture, artworks and clothing as a setting onto which he strategically places his Korean models, the artist also discusses the pervasion of the west in artistic classicism and the gradual shift towards more inclusive, global and cross-historical experiences of art.

Themes of relativity and the external gaze are emphasized in this celebrated series. Using lenticular lenses to depict languid observers against a backdrop of various modes of art – from the classical professionalism of a museum space, to a scene of city shadows upon a large public facade – the artist explores the function of the observer and the observing enclosed within the same theoretical sphere. "A museum is a space where artworks from various time periods and space can be collected together for an exhibition." He says. "The artwork must be in harmony with one another, or collide completely. The space of the museum, which requires communication between each piece of art, allows the investigation of each artist's interpretation of the layers of their subject matter."

GILI KAREV  
Art critic



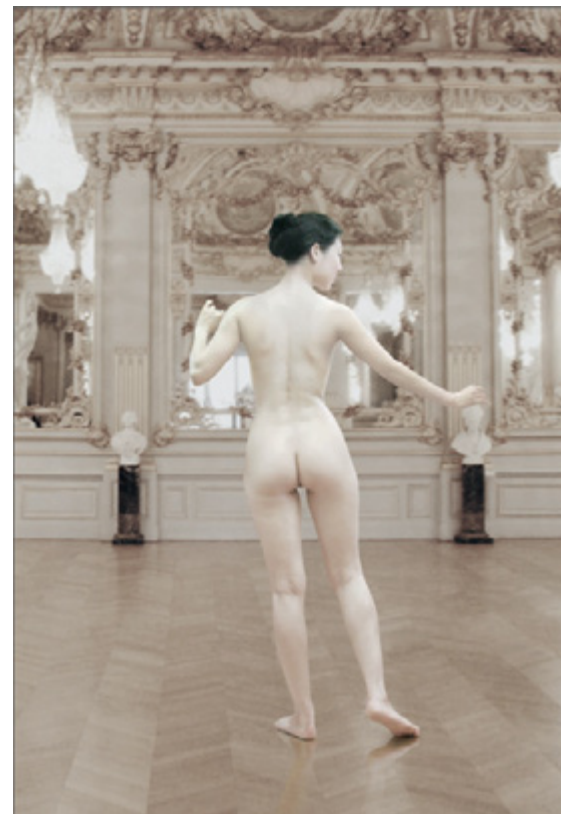


**The Costume of Painter - Garden 2, 2014**

163 x 227.3 cm -64.2 x 89.5 in.

Lenticular and oil on canvas





**The Costume of Painter -  
C. Lacroix wed 3D, 2015**  
165 x 120 cm - 65 x 47.2 in.,  
edition of 7  
Lenticular



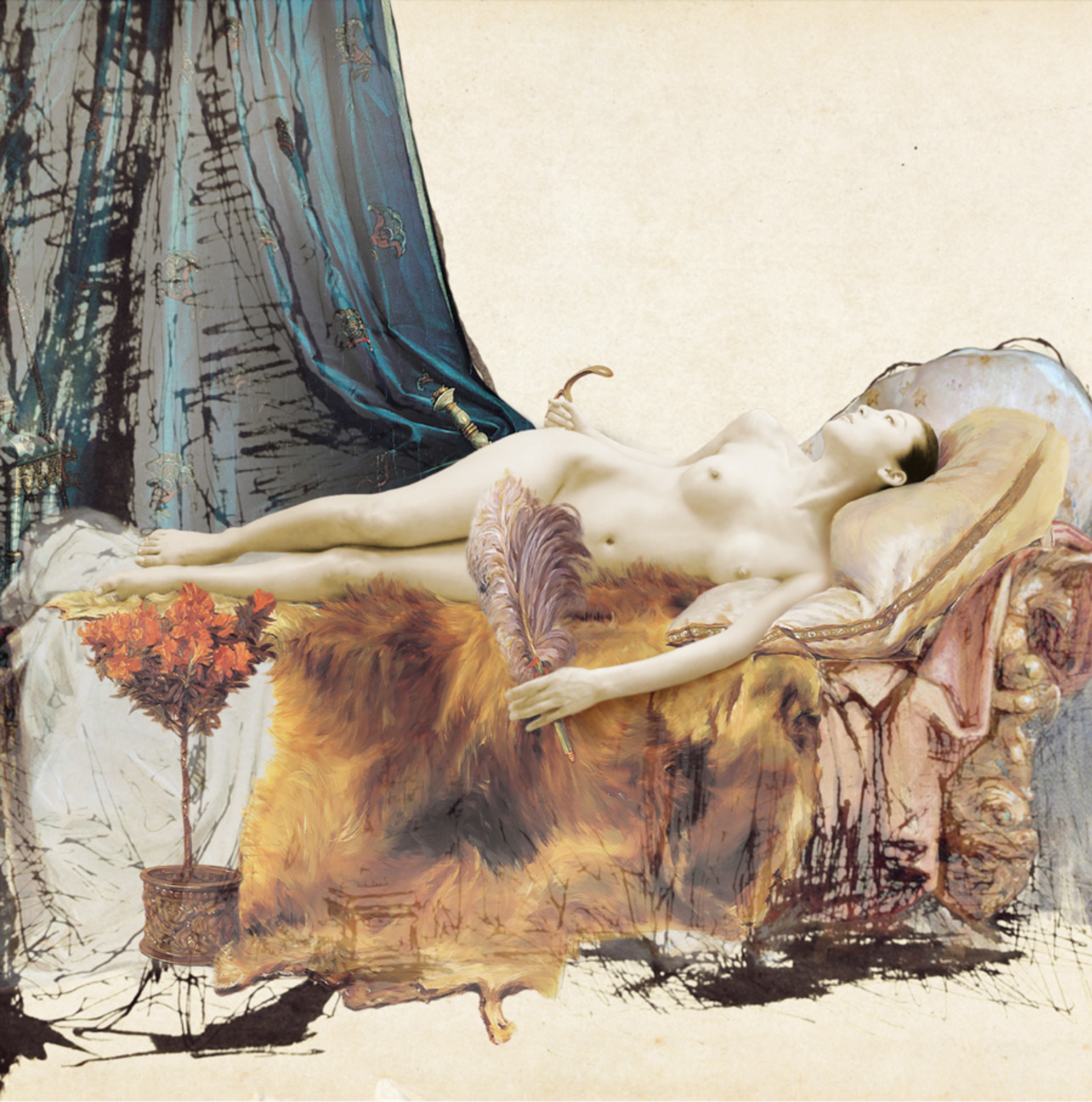


**The Costume of Painter -  
Phantom of Museum O, sketch girl, 2011**  
290.9 x 197 cm - 114.5 x 77.6 in.  
Lenticular and oil on canvas



**The Costume of Painter -  
Ingres handrail by 3D, 2015**  
180 x 120 cm - 70.9 x 47.2 in., edition of 7  
Lenticular





**The Costume of Painter - A.Tadema drawing, 2015**  
120 x 120 cm - 47.2 x 47.2 in., edition of 7  
Lenticular





**The Costume of Painter - Still life with human image vase 3D, 2015**

174 x 120 cm - 68.5 x 47.2 in., edition of 7

Lenticular



**The Costume of Painter - Romeo Dongsook 2, 2014**

180 x 120 cm - 70.9 x 47.2 in., edition of 7

Lenticular





**The Costume of Painter -  
The Frames, W. House, Mia, 2013**  
181.8 x 227.3 cm - 71.6 x 89.5 in.  
Lenticular and oil on canvas





**The Costume of Painter - Ingres, hs 3D, 2015**  
 180 x 120 cm - 70.9 x 47.2 in., edition of 7  
 Lenticular



**The Costume of Painter - Still Life with poppy 3D, 2015**  
 120 x 180 cm - 47.2 x 70.9 in., edition of 7  
 Lenticular





**The Costume of Painter -  
Shadow of Museum Ka, J.S.Sargent family jk,  
2014**

181.8 x 227.3 cm - 71.6 x 89.5 in.  
Lenticular and oil on canvas





**The Costume of Painter -  
Doodling on the Wall S, little girl, a Square 2 3D, 2015**  
120 x 120 cm - 47.2 x 47.2 in., edition of 7  
Lenticular





**The Costume of Painter - Museum K, J.S.Sargent, 2013**

193.9 x 259.1 cm - 76.3 x 102 in.

Lenticular and oil on canvas





**The Costume of Painter - A.Tadema B, W, 2014**  
 120 x120 cm - 47.2 x 47.2 in., edition of 5  
 Lenticular



**The Costume of Painter - A.Tadema drawing, Ci, 2015**  
 120 x 120 cm - 47.2 x 47.2 in., edition of 7  
 Lenticular



# OPERA GALLERY

G/F - 3/F, W Place, 52 Wyndham Street  
Central Hong Kong  
T. + 852 2810 1208  
[hkg@operagallery.com](mailto:hkg@operagallery.com)

[operagallery.com](http://operagallery.com)